



Stroll into the Sandpiper with nearly 2,500 square feet of coastal-inspired features. Upon entering from a large covered front porch, discover a foyer which opens you to many options. Down the hall to the left, you will discover a spacious drop zone area with a laundry room. Further along, you will find two bedrooms with large closets and a full bath. If you follow the foyer straight, effortlessly wonder into the large spacious kitchen, overlooking the great room and dining. Create an intimate great room area with a tray ceiling or gas fireplace. A large, gourmet island in the kitchen offers additional seating and a surplus of counter space for large dinner parties or cooking large meals. Enjoy meals in ...



3 Bedrooms



2.0 Bathrooms



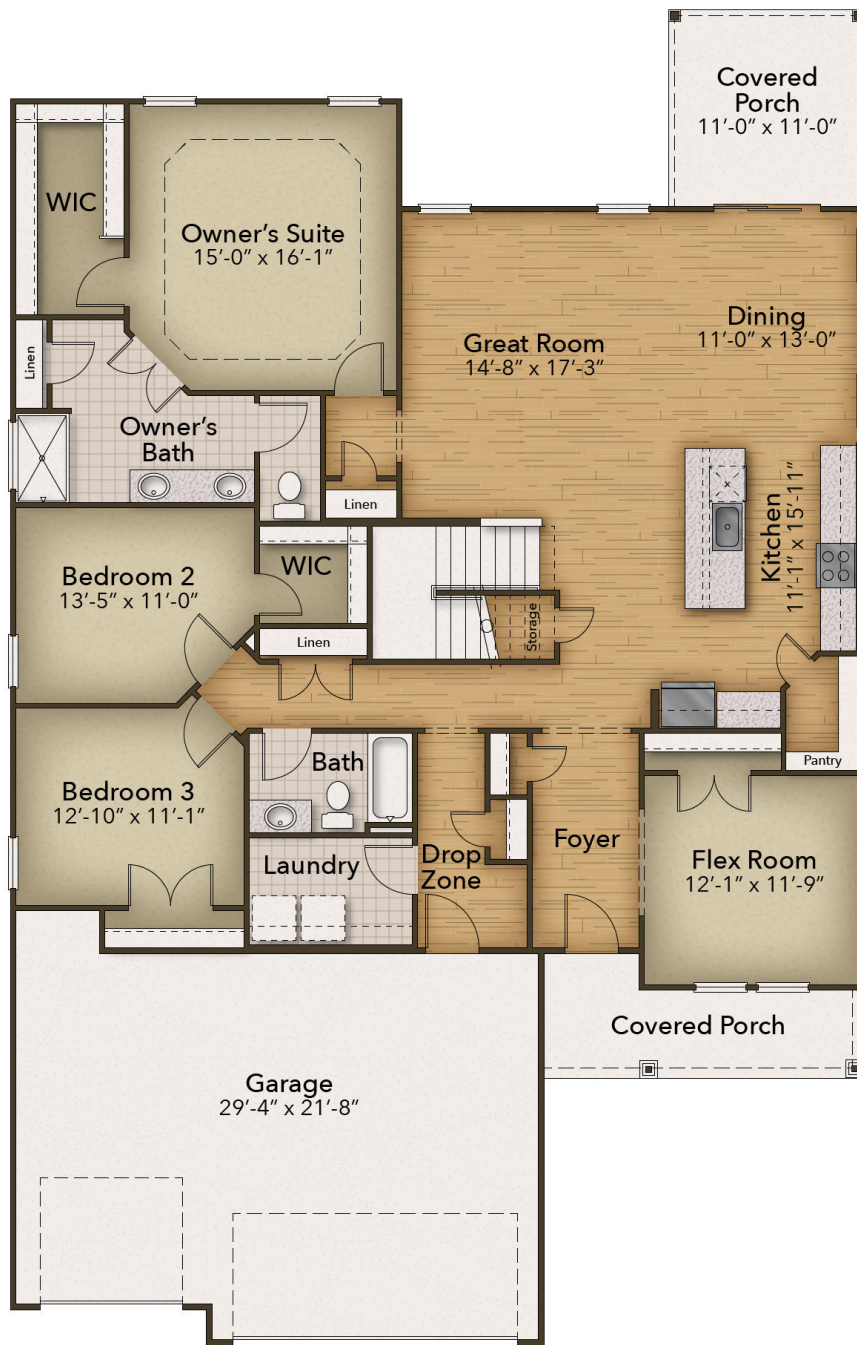
2,441 Sq.Ft.

CONTACT US 757-550-2617

WWW.CESHOMES.COM



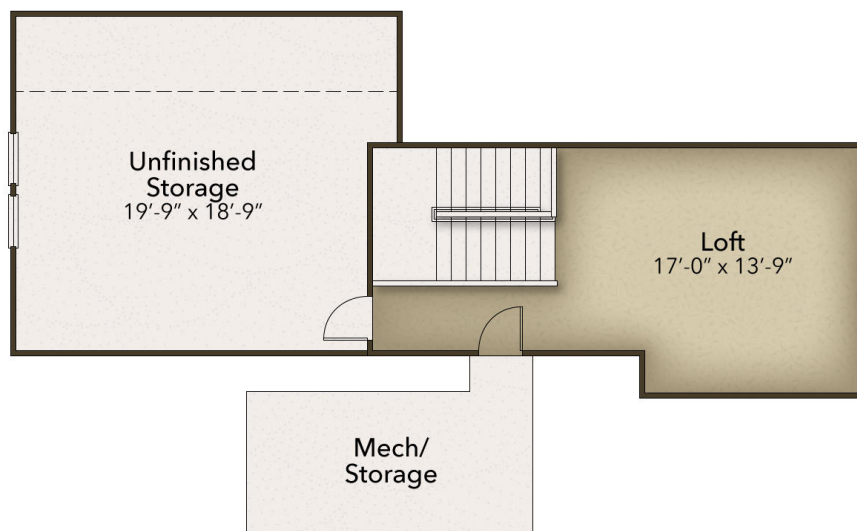
Chesapeake Homes continuously improves home designs and reserves the right to modify home features and specifications without notice or obligation. Square footage and measurements are approximate. Renderings of elevations are artist's concepts. Floor plans vary per elevation. Chesapeake Homes standard features vary by home design and location, please refer to the included features sheet for the community to define specifications. This brochure is for illustrative purposes and not part of the legal contract. Please ask Sales Associate for complete details. © 2022 Chesapeake Homes. Current information as 29th May 2022



CONTACT US 757-550-2617

WWW.CESHOMES.COM





CONTACT US 757-550-2617

WWW.CESHOMES.COM

