



Bridgewater - Shorehaven Village Community

The Boardwalk Floor Plan

Stroll into the Boardwalk with nearly 2,100 square feet of coastal-inspired features. Upon entering from a large covered front porch, discover a foyer with an leading to a spacious drop zone area. Two bedrooms with large closets and a full bath are located on the left with an open dining area just ahead. Enjoy an intricate coffered ceiling that makes the entire grand dining room stand out. A large island in the kitchen offers additional seating and a surplus of counter space for large dinner parties or cooking large meals. Enjoy smaller meals with an extended breakfast area looking out onto the beautiful view of your backyard. From the great room, breeze through extra large sliding glass doors onto a large covered porch. The Owner's suite offers an enormous walk-in closet accompanied by a beautiful Owner's bath with multiple options for a deluxe seated shower and private water closet. The second-floor adds a bedroom, full bath, walk-in closet, and linen closet alongside a spacious loft area. Use this space as a large guest suite, media room, storage, or recreational room. Make the Boardwalk the model you call "home" today!

\$534,900



3 Bedrooms



3.0 Bathrooms



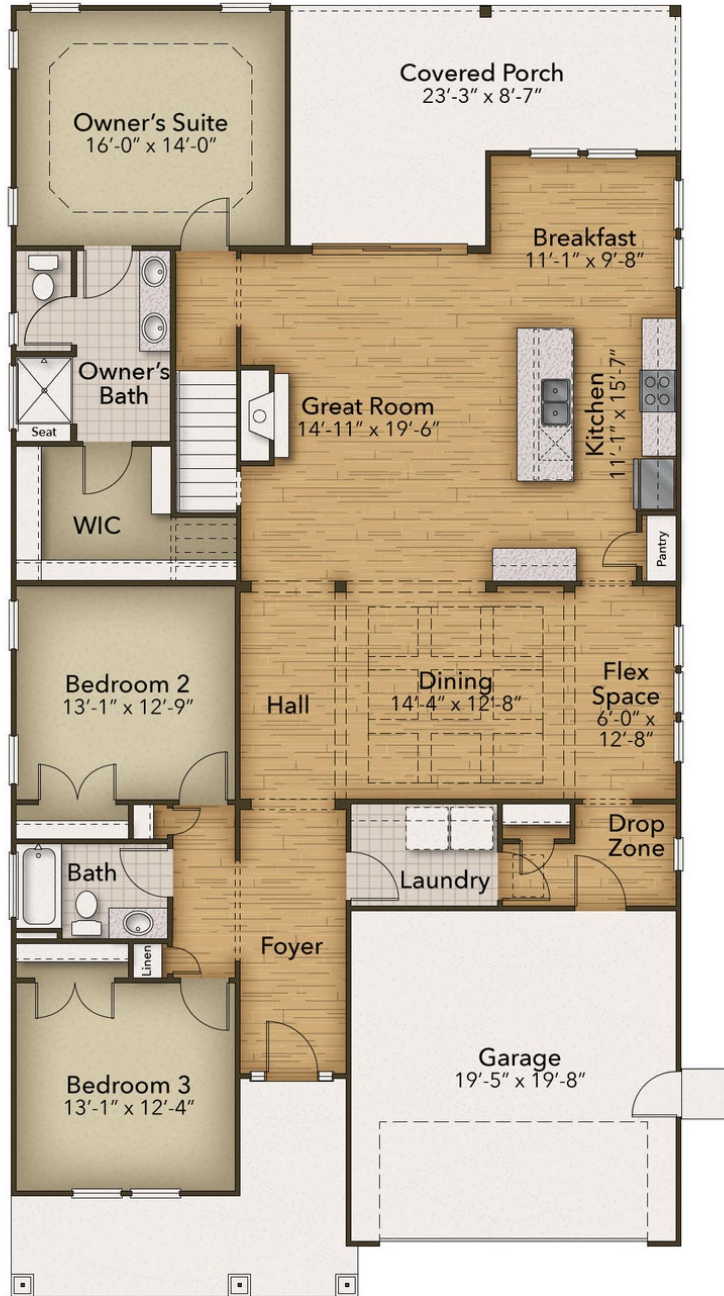
2,189 Sq.Ft.



2 Stories



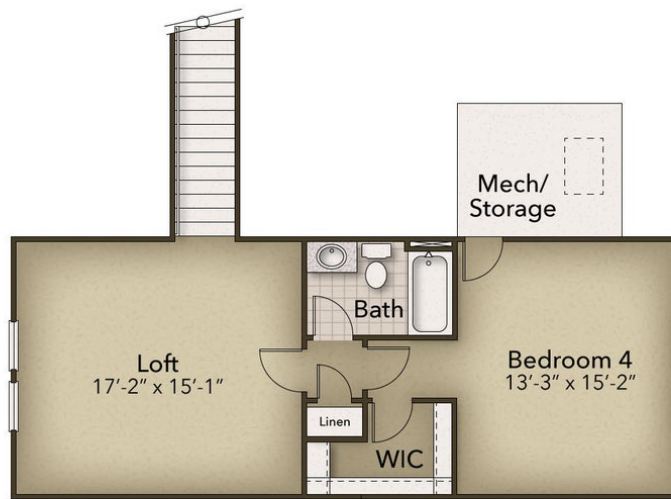
2 Car Garage



CONTACT US 757-550-2617

WWW.CESHOMES.COM





CONTACT US 757-550-2617

WWW.CESHOMES.COM

