



Bridgewater - Shorehaven Village Community

The Sunset Cove Floor Plan

Stroll into the Sunset Cove with over 2600 square feet of coastal-inspired features. Upon entering from a large covered front porch, discover a foyer with an upgraded tray ceiling leading to the spacious great room. Generous flex space can be used for an office or additional bedroom, with a secondary bedroom just down the hall featuring a full bathroom in between. A large island in the kitchen offers additional seating and a surplus of counter space for large dinner parties or cooking large meals within your upgraded gourmet kitchen. The Sunset Cove's owner's suite offers an enormous walk-in closet accompanied by a beautiful owner's bath that has been upgraded with deluxe features. A second floor has been added to this floor plan and allows the home to hold an additional bedroom, full bath, generous walk-in closet, and linen closet alongside a spacious loft area. Use this space as a large guest suite, media room, storage, or recreational room. Make the Sunset Cove the model you call "home" today!**Pictures of a similar home are shown



3 Bedrooms



3.0 Bathrooms



2,615 Sq.Ft.



2 Stories



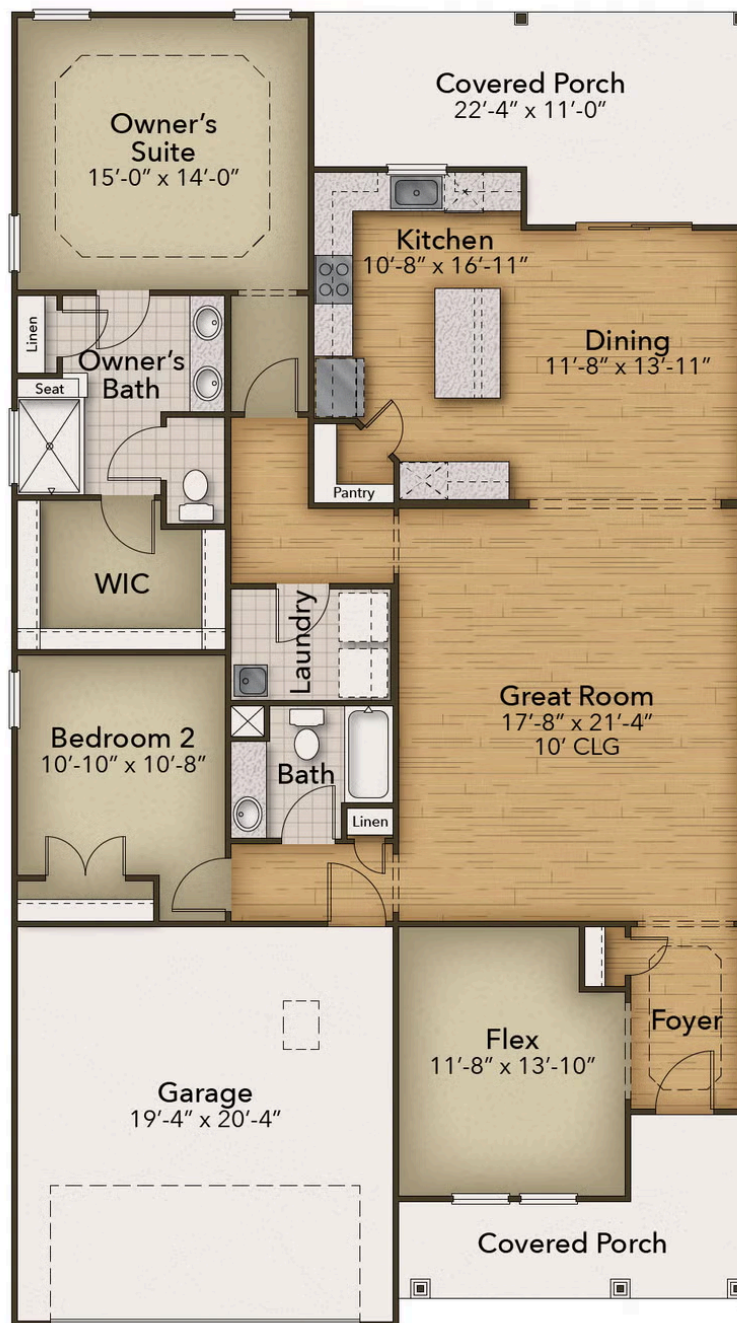
2 Car Garage

CONTACT US 757-550-2617

WWW.CHESHOMES.COM



FIRST FLOOR

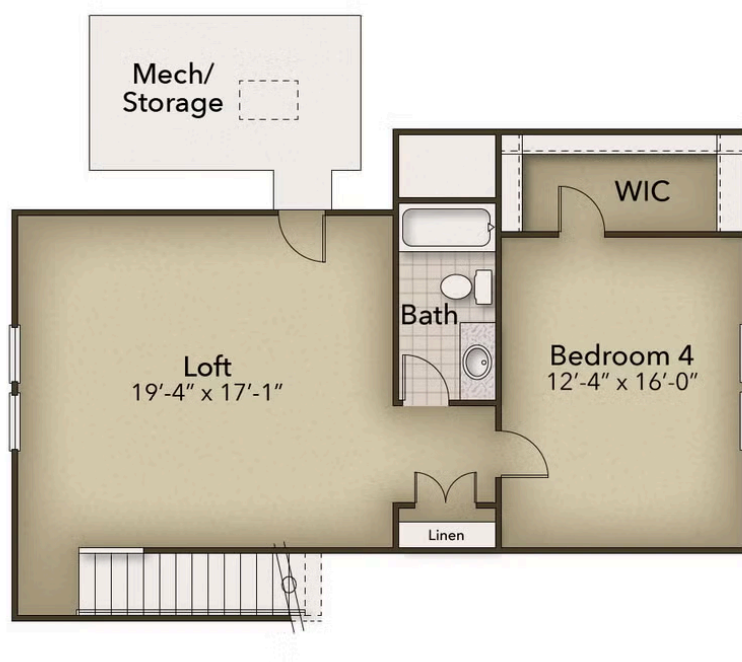


CONTACT US 757-550-2617

WWW.CESHOMES.COM



SECOND FLOOR



CONTACT US 757-550-2617

WWW.CHESHOMES.COM

