



Bridgewater - Shorehaven Village Community

The Sunset Cove Floor Plan

Stroll into the Sunset Cove with nearly 1,817 square feet of first-floor coastal-inspired features. Upon entering from a large covered front porch, discover a foyer with an optional tray ceiling leading to the spacious great room. Generous flex space can be used for an office or additional bedroom with a secondary bedroom just down the hall with a full bathroom in between. Create an intimate great room area with a tray ceiling or gas fireplace. A large, gourmet island in the kitchen offers additional seating and a surplus of counter space for large dinner parties or cooking large meals. From the dining room, breeze through sliding glass doors onto a large covered porch with an optional outdoor fireplace. The Sunset Cove's owner's suite offers an enormous walk-in closet accompanied by a beautiful owner's bath with multiple options for a deluxe seated shower or deep soaking tub. An optional second floor plan adds a bedroom, full bath, generous walk-in closet, and linen closet...



3 Bedrooms



2.0 Bathrooms



1,817 Sq.Ft.



1 Stories



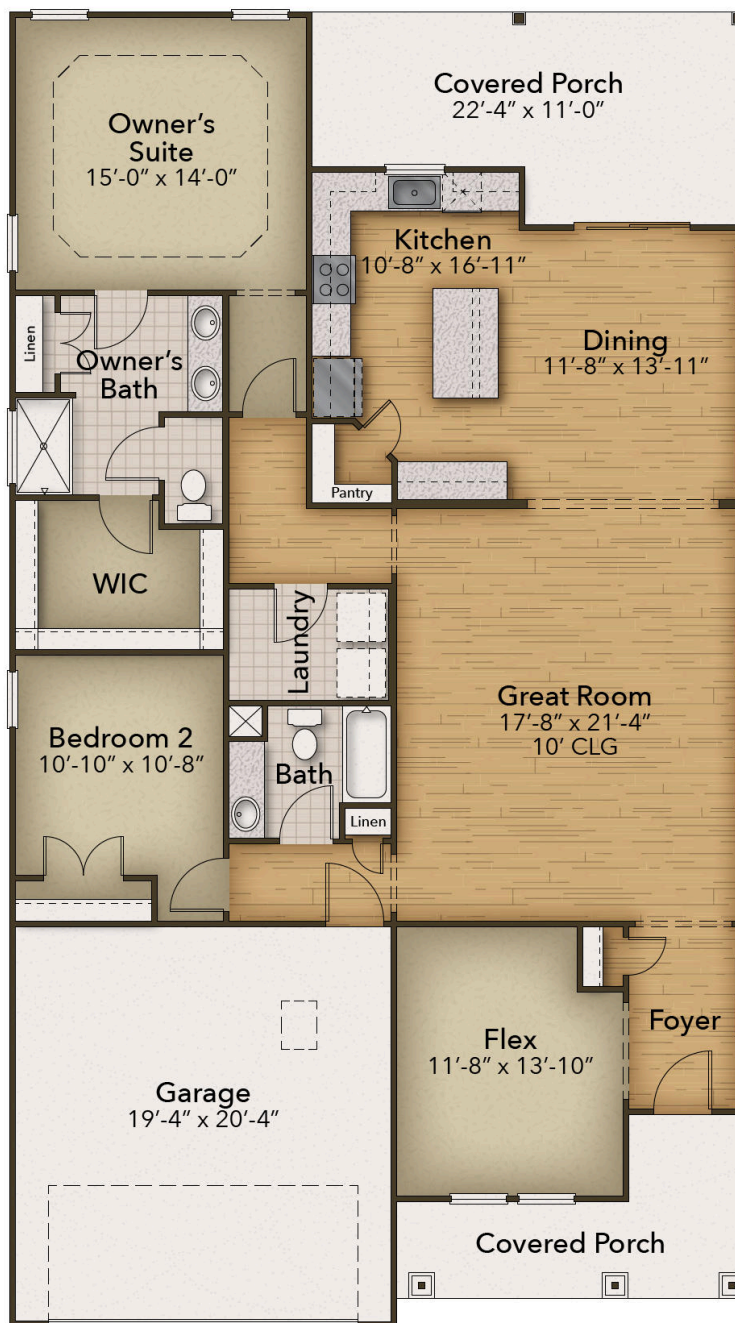
2 Car Garage

CONTACT US 757-550-2617

WWW.CESHOMES.COM



OWNER'S SUITE



CONTACT US 757-550-2617

WWW.CESHOMES.COM

