



## Bridgewater - Shorehaven Village Community

### The Sunset Cove Floor Plan

With nearly 1,817 square feet of thoughtfully designed first-floor living, this home blends open-concept flow with private retreats, creating the perfect balance of connection and calm. Step inside from the expansive covered front porch into a light-filled foyer that guides you straight into the heart of the home – a spacious great room and chef-inspired kitchen designed for everyday living and memorable gatherings. Whether you're hosting friends, enjoying a quiet morning coffee, or winding down after a long day, this open layout adapts beautifully to your lifestyle. A versatile flex space offers endless possibilities – create a home office, hobby room, or guest bedroom, while a secondary bedroom and full bath just down the hall provide comfort and privacy for visitors or family members. From the dining area, sliding glass doors lead to a generous covered rear porch, extending your living space outdoors and inviting in coastal breezes. It's the perfect setting for evening...

**\$524,900**



**3 Bedrooms**



**2.0 Bathrooms**



**1,817 Sq.Ft.**



**1 Stories**



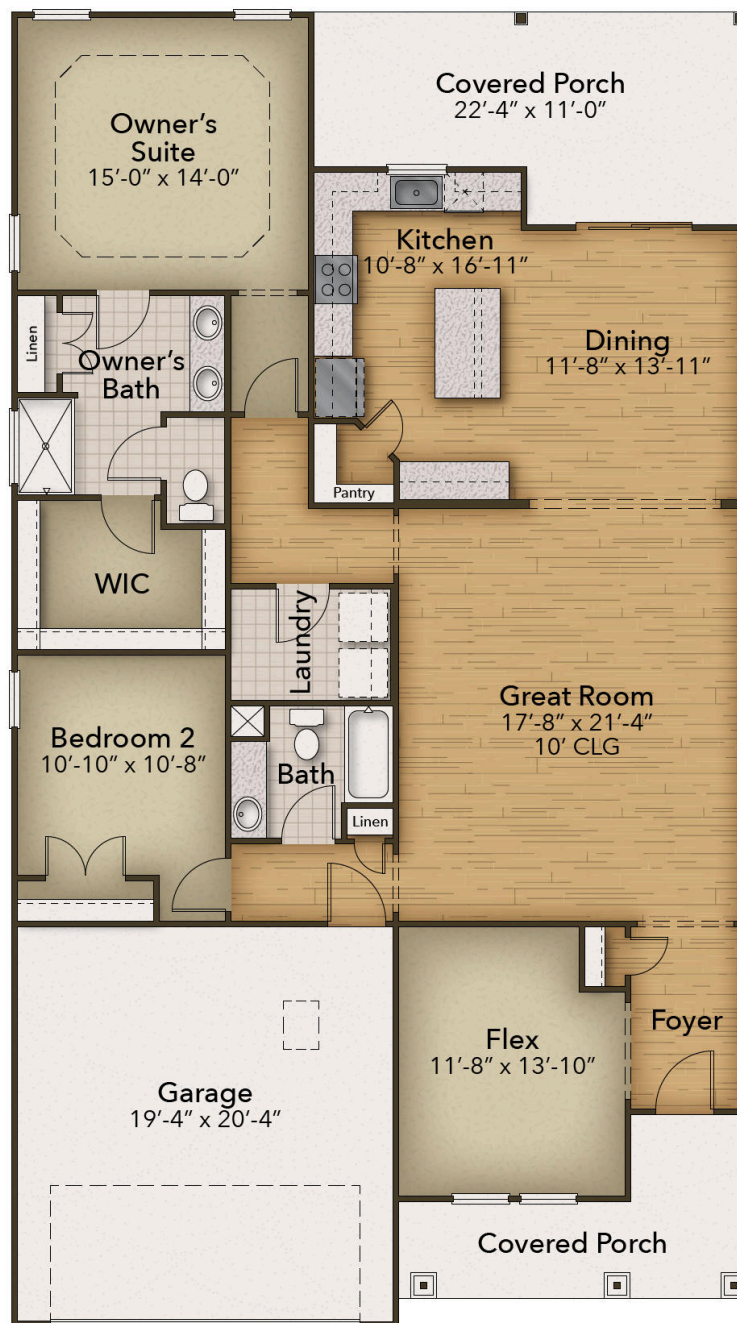
**2 Car Garage**

**CONTACT US 757-550-2617**

**WWW.CESHOMES.COM**



## OWNER'S SUITE



CONTACT US 757-550-2617

WWW.CESHOMES.COM

