



Bridgewater - Shorehaven Village Community

The Sandpiper Floor Plan

The Sandpiper is a 3 bed, 2 bath home with 2,441 square feet of open living space and a 3-car garage. Enter from the covered front porch into a foyer that leads to a drop zone and laundry room. Two bedrooms with large closets and a full bath are located down the hall. The main living area features an open layout with a spacious kitchen, dining area, and great room. The kitchen includes a large island with ample seating and counter space, ideal for everyday living and entertaining. Sliding glass doors lead to a covered rear porch, extending the living space outdoors. A flex room with glass French doors offers the perfect space for a home office or additional living area. The owner's suite includes a large walk-in closet and a private bath, creating a comfortable retreat. This home offers a functional layout with generous space throughout. *PHOTOS COMING SOON*

\$589,900



3 Bedrooms



2.0 Bathrooms



2,441 Sq.Ft.



2 Stories

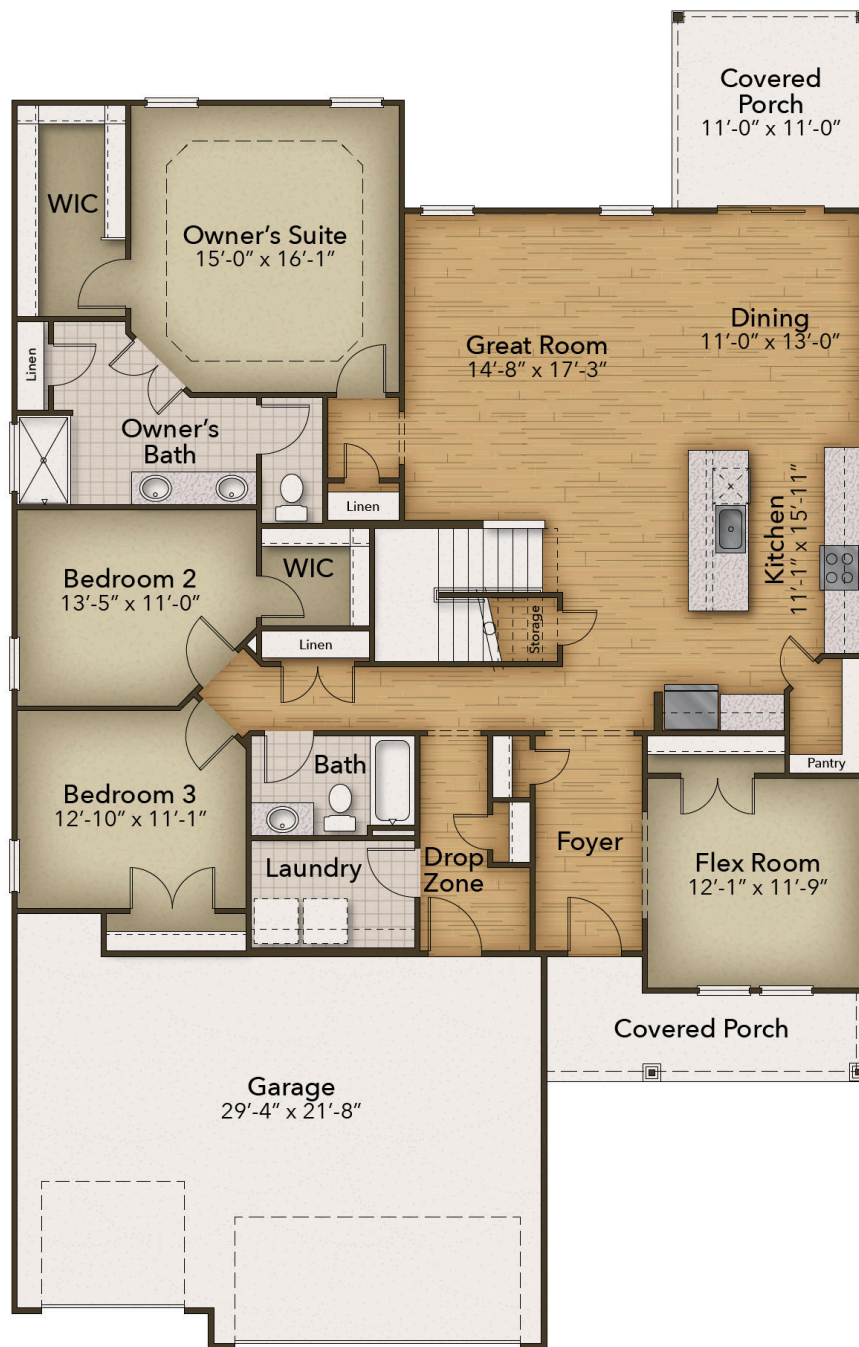


3 Car Garage

CONTACT US 757-550-2617

WWW.CESHOMES.COM

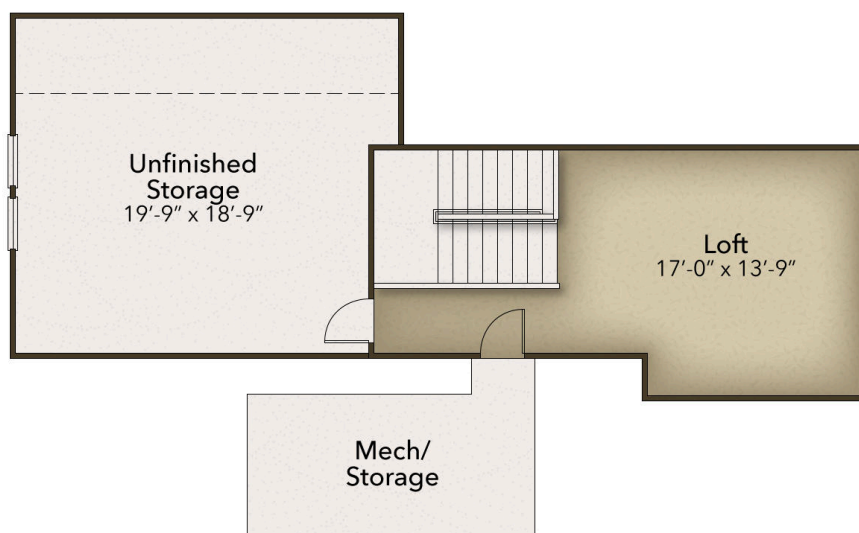




CONTACT US 757-550-2617

WWW.CESHOMES.COM





CONTACT US 757-550-2617

WWW.CESHOMES.COM

