



## Bridgewater - Shorehaven Village Community

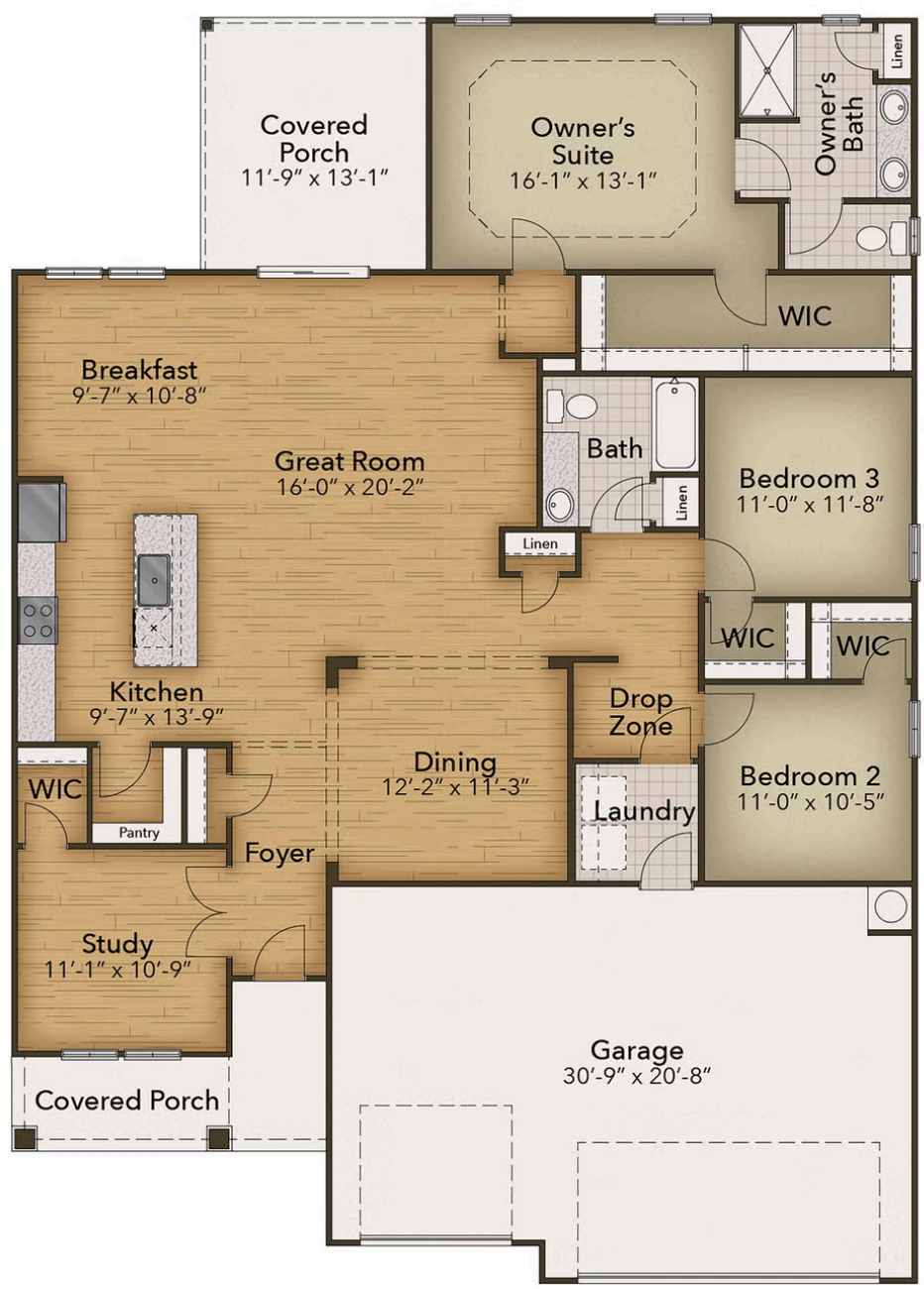
### The Wave Crest Floor Plan

The Wave Crest is a 3 bed, 2 bath home designed for spacious, open living. Enter through the covered front porch into a welcoming foyer with a study just off to the side. The main living area features an open layout with a large kitchen, dining area, and great room, creating an ideal space for everyday living and entertaining. The kitchen includes ample counter space, storage, and a walk-in pantry, with a breakfast nook just beyond. Two bedrooms with walk-in closets and a full bath are located at the front of the home, along with a convenient laundry room and drop zone. The owner's suite offers a private retreat with a large walk-in closet and a spacious bath with dual vanities. A covered rear porch extends the living space outdoors, perfect for relaxing or hosting. \*PHOTOS OF SIMILAR HOME\*

**\$574,900**

 **3 Bedrooms**

 **2.0 Bathrooms**



CONTACT US 757-550-2617  
WWW.CESHOMES.COM