



Bridgewater - Shorehaven Village Community

The Shorebreak Floor Plan

The Shorebreak is the perfect balance between outdoor living space and a coastal-inspired interior, encouraging you to slip off your sandals and relax. With 2,590 square feet, this model offers three bedrooms, three bathrooms, and a second floor above a two-car garage. Step in from the Shorebreak's covered front porch to find an open kitchen, dining, and great room area. Breeze through sliding glass doors onto a 179 square foot covered porch, ideal for warm summer evenings or afternoon get-togethers. Enjoy the beautiful tray ceiling and the fireplace on cozy days. Whether you're looking for an abundance of counter space, added seating, or a more intimate gathering area, this model's options will serve as the solution. Through the foyer, you'll find a large drop zone and laundry area and a bench for seating while you unload beach accessories or sand-filled clothes. Drop-off beach chairs in the convenient storage space just inside the garage, as well. Across from the drop zone, you will find a spacious study with French doors. Beyond the open living space, find a stunning master suite complete with a tray ceiling, enormous walk-in closet, double vanity, and a seated shower. ...

\$545,900

 **3 Bedrooms**

 **3.0 Bathrooms**

 **2,590 Sq.Ft.**

 **2 Stories**

 **2 Car Garage**

FIRST FLOOR

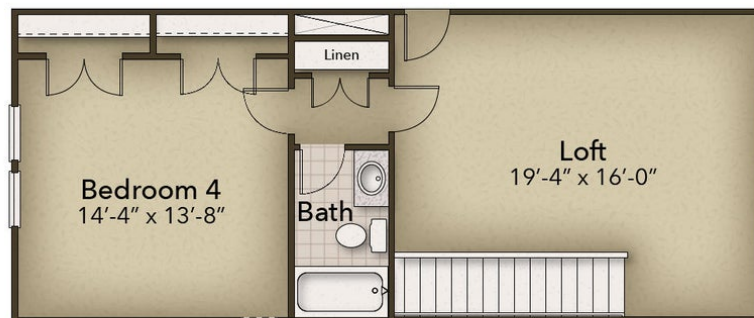


CONTACT US 757-550-2617

WWW.CESHOMES.COM



SECOND FLOOR



CONTACT US 757-550-2617

WWW.CESHOMES.COM

