



## **Bridgewater - Shorehaven Village Community**

### **The Mangrove Floor Plan**

Life is simply divine in The Mangrove model. A whopping 3,349 square feet of space results in a new home that's roomy enough for every member of the household. A buyer favorite, this plan offers up to five bedrooms and up to three full baths. Downstairs offers the essential space your family needs. The kitchen with an extended counter and cabinet space allows for stocking up for those fun holiday gatherings. Your guests will feel spoiled with a shower in the downstairs bathroom alongside the guest suite. The second level offers endless amounts of space for all. An Owner's Suite with enormous dual closets and a spa-like Owner's Bath makes for the perfect space away from the hustle and bustle. Three additional bedrooms and the loft/sitting area means there's enough room for every member of the family to have their peaceful retreat. Make the Mangrove your home today!

**\$549,900**



**5 Bedrooms**



**3.5 Bathrooms**



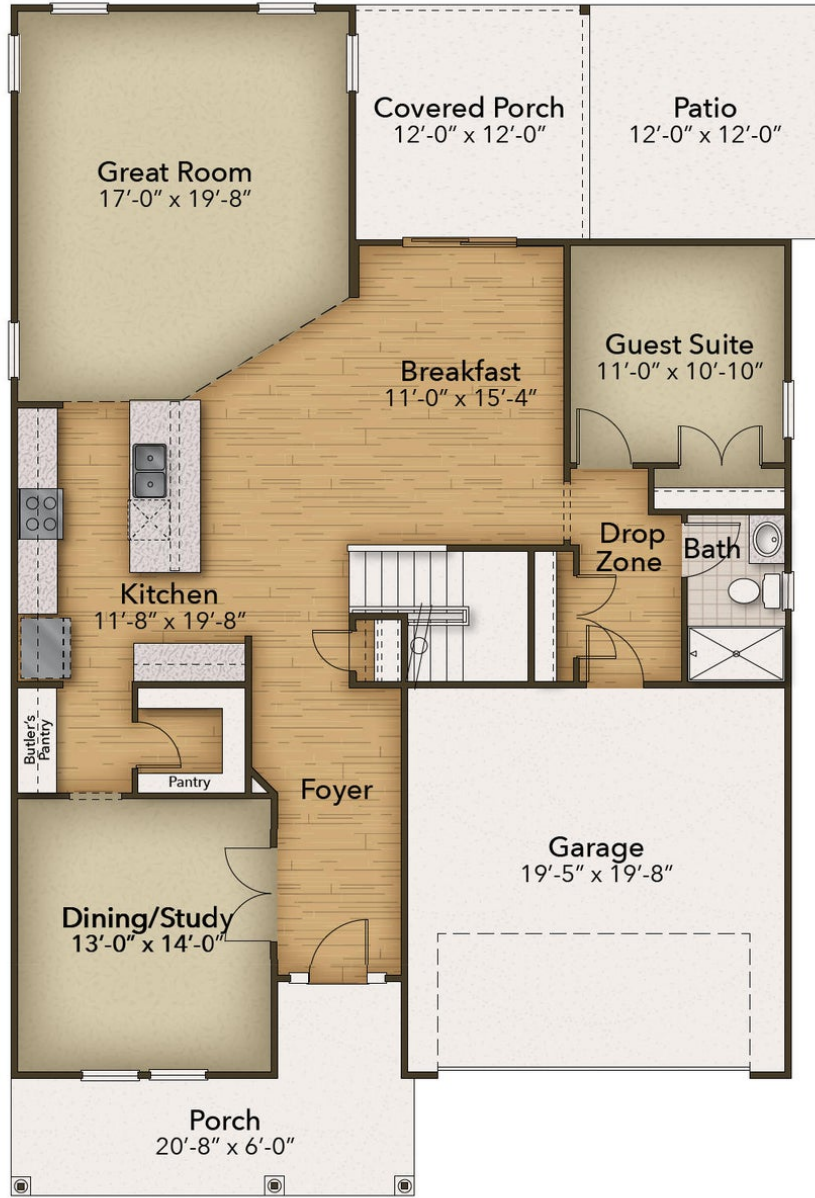
**3,349 Sq.Ft.**



**2 Stories**



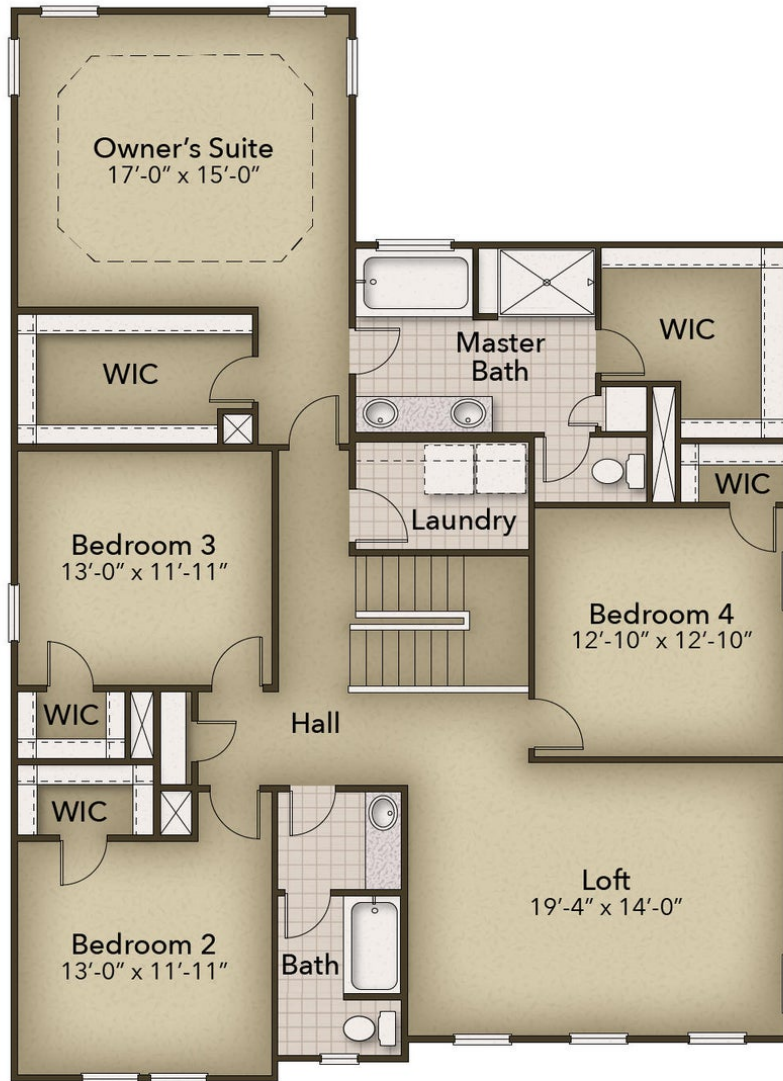
**2 Car Garage**



**CONTACT US 757-550-2617**

**WWW.CESHOMES.COM**





**CONTACT US 757-550-2617**

**WWW.CESHOMES.COM**

