



## Bridgewater - Shorehaven Village Community

### The Seashore Floor Plan

Step into the Seashore, a coastal haven spanning almost 2,743 square feet. As you enter from the inviting covered porch, you'll find a foyer leading to a generous drop zone area. To the left, there's a bedroom and a study with ample closets and a full bath, complemented by an open dining area ahead. A convenient powder room awaits your guests on the right as you step in. The kitchen boasts a large gourmet island for extra seating and abundant counter space for elaborate dinner parties or cooking feasts. The garage comes with both a 4-foot extension and an additional 5-foot extension at the back for more storage. The Seashore's master suite features a spacious walk-in closet and a luxurious master bath with a deluxe seated shower. Upstairs, another bedroom with a full bath, walk-in closet, linen closet, and roomy loft await. Customize this versatile space as a guest suite, media room, storage area, or recreational spot.

**\$669,900**



4 Bedrooms



3.0 Bathrooms



2,743 Sq.Ft.



2 Stories



2 Car Garage

## FIRST FLOOR

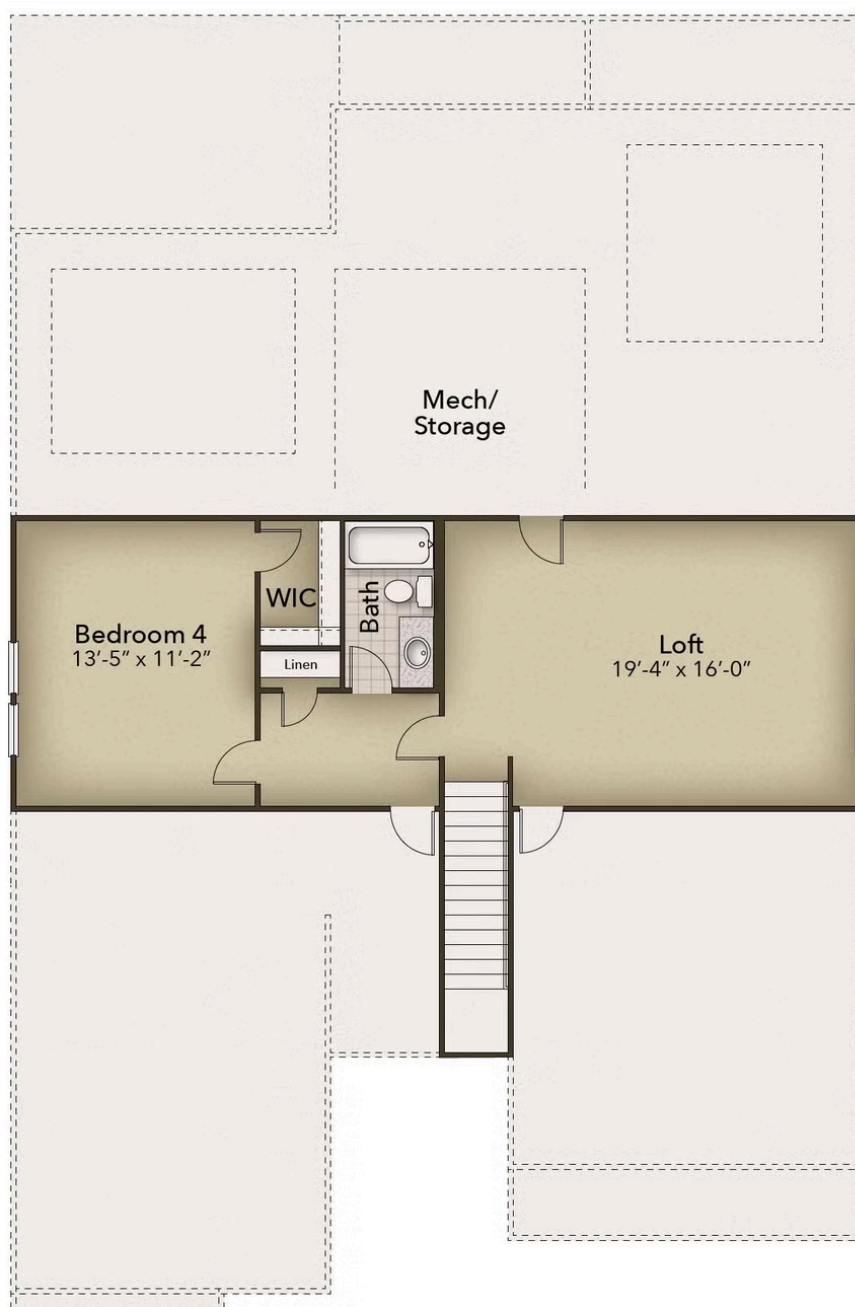


CONTACT US 757-550-2617

WWW.CESHOMES.COM



## SECOND FLOOR



CONTACT US 757-550-2617

WWW.CHESHOMES.COM

