



Bridgewater - Shorehaven Village Community

The Shorebreak Floor Plan

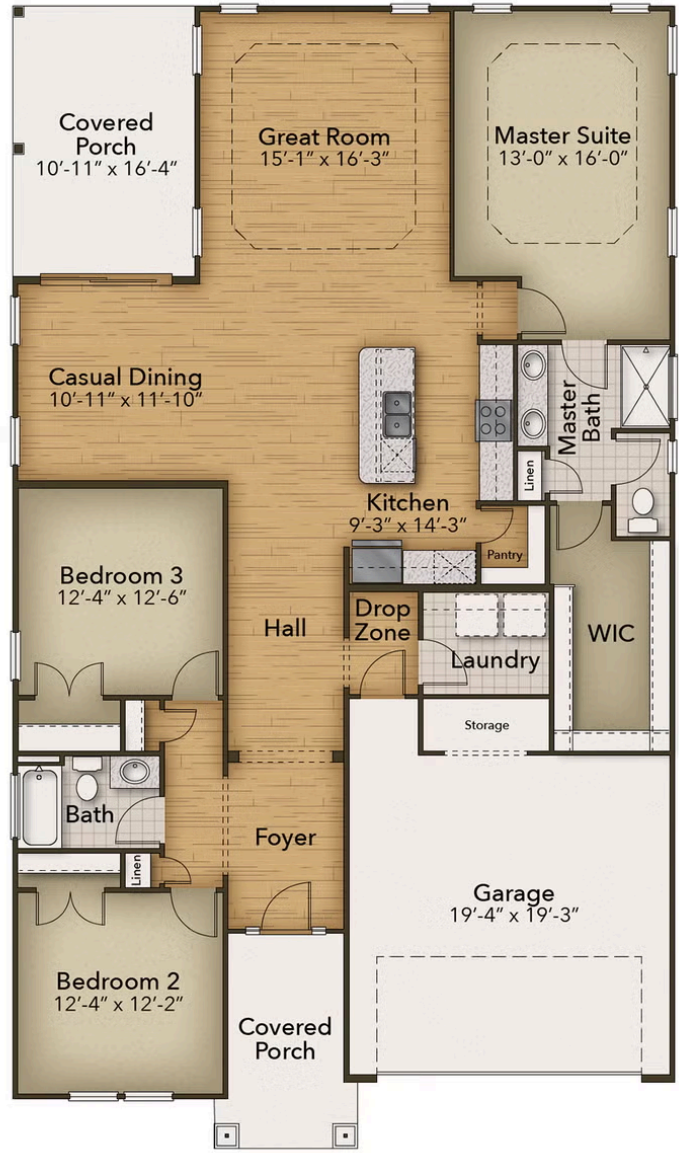
The Shorebreak is the perfect balance between outdoor living space and a coastal-inspired interior, encouraging you to slip off your sandals and relax. With 1936 square feet, this model offers ample space, three bedrooms, two bathrooms. As you step inside from the covered front porch, you'll immediately find yourself in an open and inviting kitchen, dining, and great room area. The sliding glass doors seamlessly connect the interior with a generous 179 square foot covered porch, providing an ideal setting for warm summer evenings or gatherings with friends and family. Continuing through the foyer, you'll discover a spacious drop zone and laundry area, equipped with convenient features like a soaking sink, extra shelving, and a bench for comfortable seating while unloading beach gear or sandy clothes. Across from the drop zone. Beyond the open living space, the Shorebreak presents a stunning Owner's Suite that exudes luxury and comfort. It boasts a tray ceiling, a generously sized...

\$494,900

 **3 Bedrooms**

 **2.0 Bathrooms**

FIRST FLOOR



CONTACT US 757-550-2617
WWW.CHESHOMES.COM