



Bridgewater - Shorehaven Village Community

The Shorebreak Floor Plan

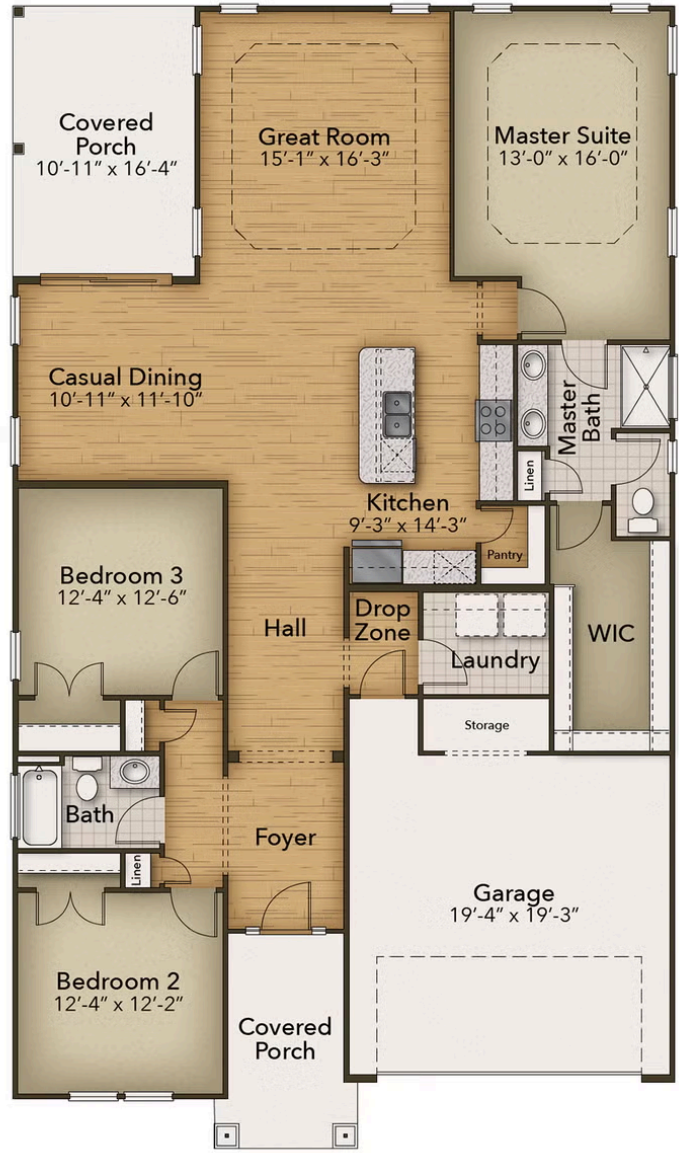
The Shorebreak is a coastal-inspired, one-story home offering 3 bedrooms, 2 bathrooms, and 1,938 square feet of thoughtfully designed living space. Step inside from the covered front porch into an open kitchen, dining, and great room that creates a bright and welcoming living area. Sliding glass doors lead to a 179-square-foot covered porch, providing the perfect space for relaxing or gathering with friends and family. Just off the foyer is a convenient drop zone and laundry area with built-in storage and a bench, ideal for keeping everyday essentials organized. Tucked away for privacy, the Owner's Suite features a tray ceiling, a spacious walk-in closet, and a private bath with a double vanity and a large shower. The Shorebreak blends comfort, functionality, and coastal style in a beautifully designed single-level home. *PHOTOS OF SIMILAR HOME*

 3 Bedrooms

 2.0 Bathrooms

 1,938 Sq. Ft.

FIRST FLOOR



CONTACT US 757-550-2617

WWW.CESHOMES.COM