



Bridgewater - Shorehaven Village Community

The Sandpiper Floor Plan

Stroll into the Sandpiper with nearly 2,441 square feet of coastal-inspired features. Upon entering from a large covered front porch, discover a foyer which opens you to many options. Down the hall to the left, you will discover a spacious drop zone area with a laundry room. Further along, you will find two bedrooms with large closets and a full bath. If you follow the foyer straight, effortlessly wonder into the large spacious kitchen, overlooking the great room and dining. Enjoy meals in your dining area looking out onto the beautiful view of your covered porch, leading to the backyard. From the great room, breeze through sliding glass doors onto a large covered porch. The Sandpiper's owner's suite offers an enormous walk-in closet accompanied by a beautiful owner's bath. A second-floor space has a loft to truly make the home yours. Use this space as a large guest suite, media room, storage, recreational room. Make the Sandpiper the model you call "home" today!

*PHOTOS OF SIMILAR...

\$657,757



3 Bedrooms



2.0 Bathrooms



2,441 Sq.Ft.



2 Stories



3 Car Garage

CONTACT US 757-550-2617

WWW.CESHOMES.COM





CONTACT US 757-550-2617

WWW.CESHOMES.COM



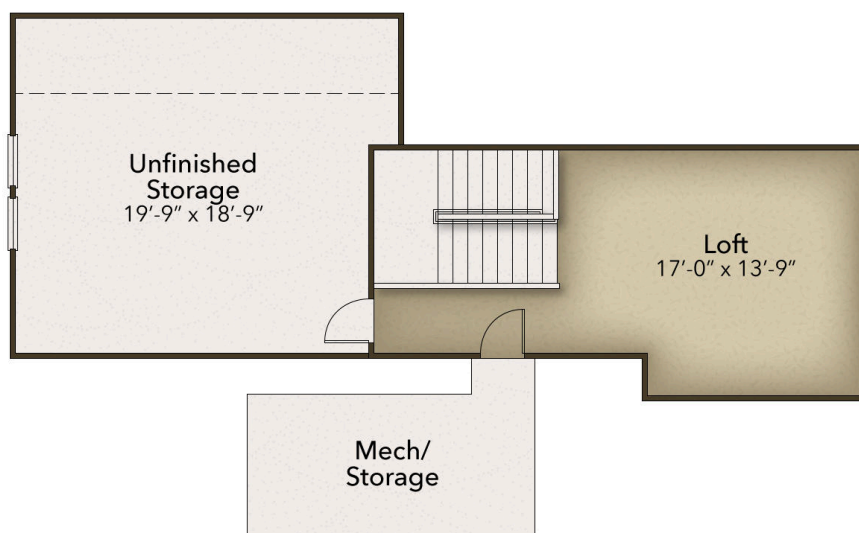


CONTACT US 757-550-2617

WWW.CESHOMES.COM



Chesapeake Homes continuously improves home designs and reserves the right to modify home features and specifications without notice or obligation. Square footage and measurements are approximate. Renderings of elevations are artist's concepts. Floor plans vary per elevation. Chesapeake Homes standard features vary by home design and location, please refer to the included features sheet for the community to define specifications. This brochure is for illustrative purposes and not part of the legal contract. Please ask Sales Associate for complete details. © 2026 Chesapeake Homes. Current information as 20th February 2026

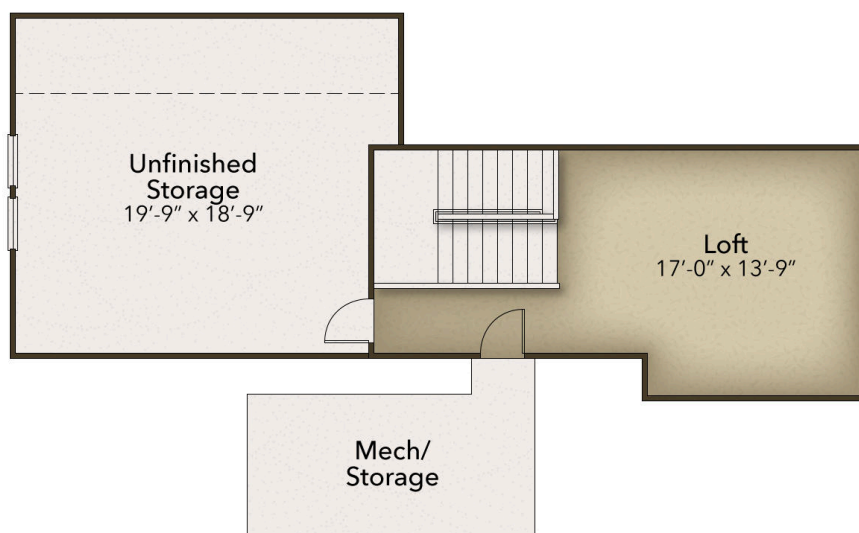


CONTACT US 757-550-2617

WWW.CHESHOMES.COM



Chesapeake Homes continuously improves home designs and reserves the right to modify home features and specifications without notice or obligation. Square footage and measurements are approximate. Renderings of elevations are artist's concepts. Floor plans vary per elevation. Chesapeake Homes standard features vary by home design and location, please refer to the included features sheet for the community to define specifications. This brochure is for illustrative purposes and not part of the legal contract. Please ask Sales Associate for complete details. © 2026 Chesapeake Homes. Current information as 20th February 2026



CONTACT US 757-550-2617

WWW.CHESHOMES.COM



Chesapeake Homes continuously improves home designs and reserves the right to modify home features and specifications without notice or obligation. Square footage and measurements are approximate. Renderings of elevations are artist's concepts. Floor plans vary per elevation. Chesapeake Homes standard features vary by home design and location, please refer to the included features sheet for the community to define specifications. This brochure is for illustrative purposes and not part of the legal contract. Please ask Sales Associate for complete details. © 2026 Chesapeake Homes. Current information as 20th February 2026