



## Bridgewater - Shorehaven Village Community

### The Sandpiper Floor Plan

Stroll into the Sandpiper with nearly 2,441 square feet of coastal-inspired features. Upon entering from a large covered front porch, discover a foyer which opens you to many options. Down the hall to the left, you will discover a spacious drop zone area with a laundry room. Further along, you will find two bedrooms with large closets and a full bath. If you follow the foyer straight, effortlessly wander into the large spacious kitchen, overlooking the great room and dining. Enjoy meals in your dining area looking out onto the beautiful view of your covered porch, leading to the backyard. From the great room, breeze through sliding glass doors onto a large covered porch. The Sandpiper's owner's suite offers an enormous walk-in closet accompanied by a beautiful owner's bath. A second-floor space has a loft to truly make the home yours. Use this space as a large guest suite, media room, storage, recreational room. Make the Sandpiper the model you call "home" today!  
\*PHOTOS OF SIMILAR...

**\$649,900**



**3 Bedrooms**



**3.0 Bathrooms**



**2,863 Sq.Ft.**



**2 Stories**

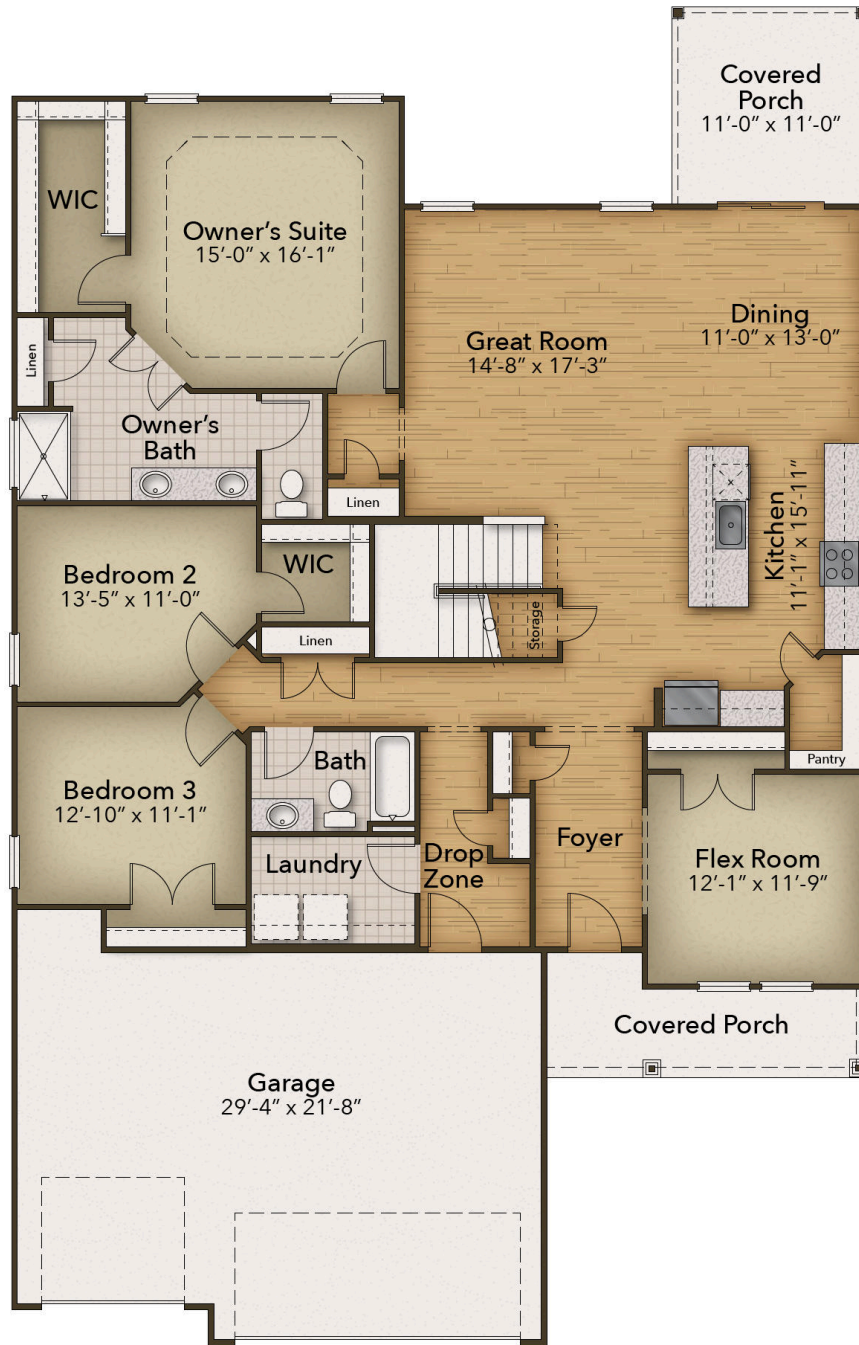


**3 Car Garage**

**CONTACT US 757-550-2617**

**WWW.CESHOMES.COM**





CONTACT US 757-550-2617

WWW.CESHOMES.COM

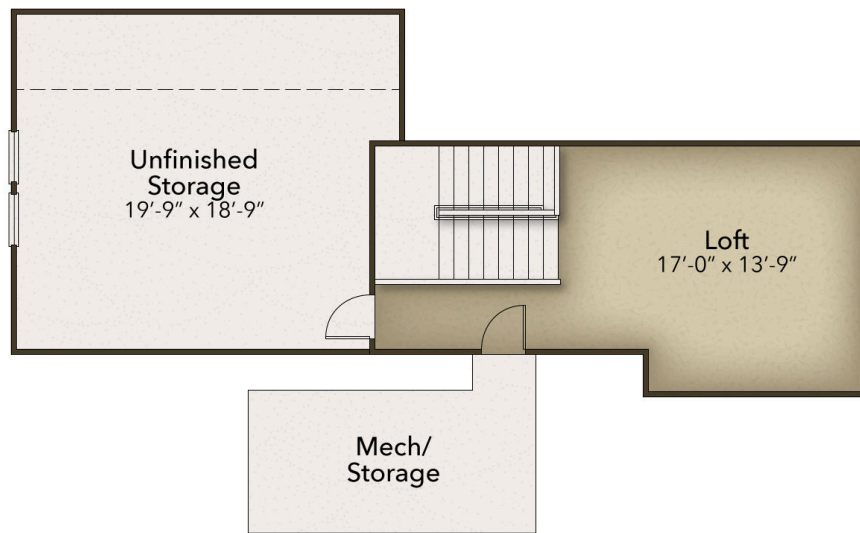




CONTACT US 757-550-2617

WWW.CESHOMES.COM

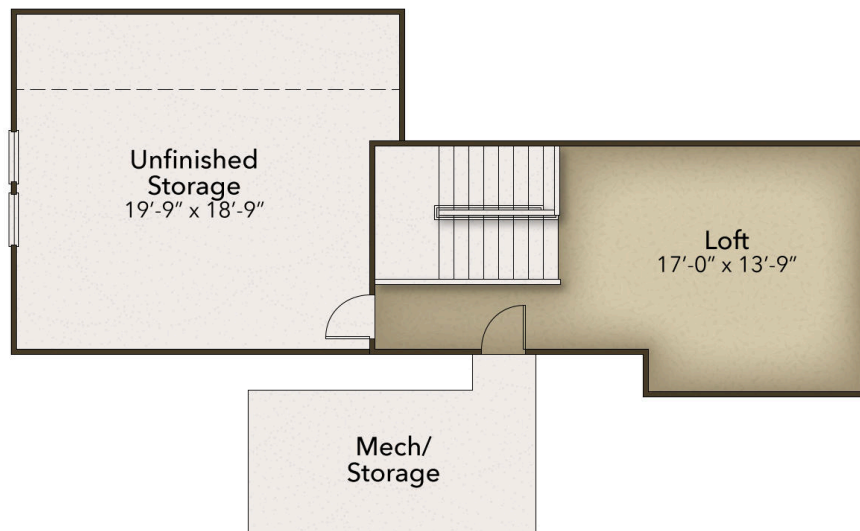




CONTACT US 757-550-2617

WWW.CESHOMES.COM





CONTACT US 757-550-2617

WWW.CESHOMES.COM

