



Bridgewater - Shorehaven Village Community

The Mangrove Floor Plan

Life is simply divine in The Mangrove model. A whopping 3,349 square feet of space results in a new home that's roomy enough for every member of the household. A buyer favorite, this plan offers up to five bedrooms and up to three full baths depending upon the layout you select. Downstairs offers the essential space your family needs. Choose to include a gourmet kitchen with extended counter and cabinet space, add a butler's pantry for additional space, or add a shower to the downstairs bathroom to create a full bath alongside the guest suite. The second level offers endless amounts of space for all. An Owner's Suite with enormous dual closets and a spa-like Owner's Bath makes for the perfect space away from the hustle and bustle. Three additional bedrooms and the loft/sitting area/5th bedroom means there's enough room for every member of the family to have their own peaceful retreat. Check out the interactive floor plan and decide which options you will choose for your new home!



5 Bedrooms



2.5 Bathrooms



3,349 Sq.Ft.

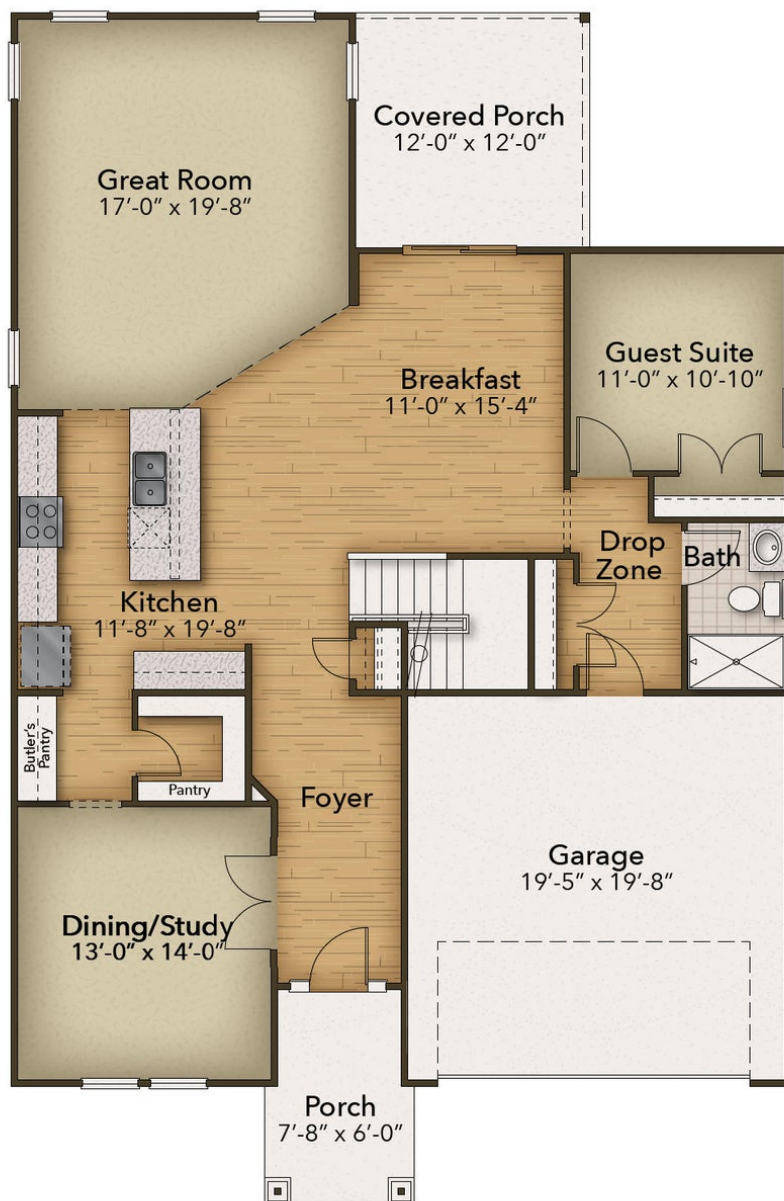


2 Stories



2 Car Garage

FIRST FLOOR

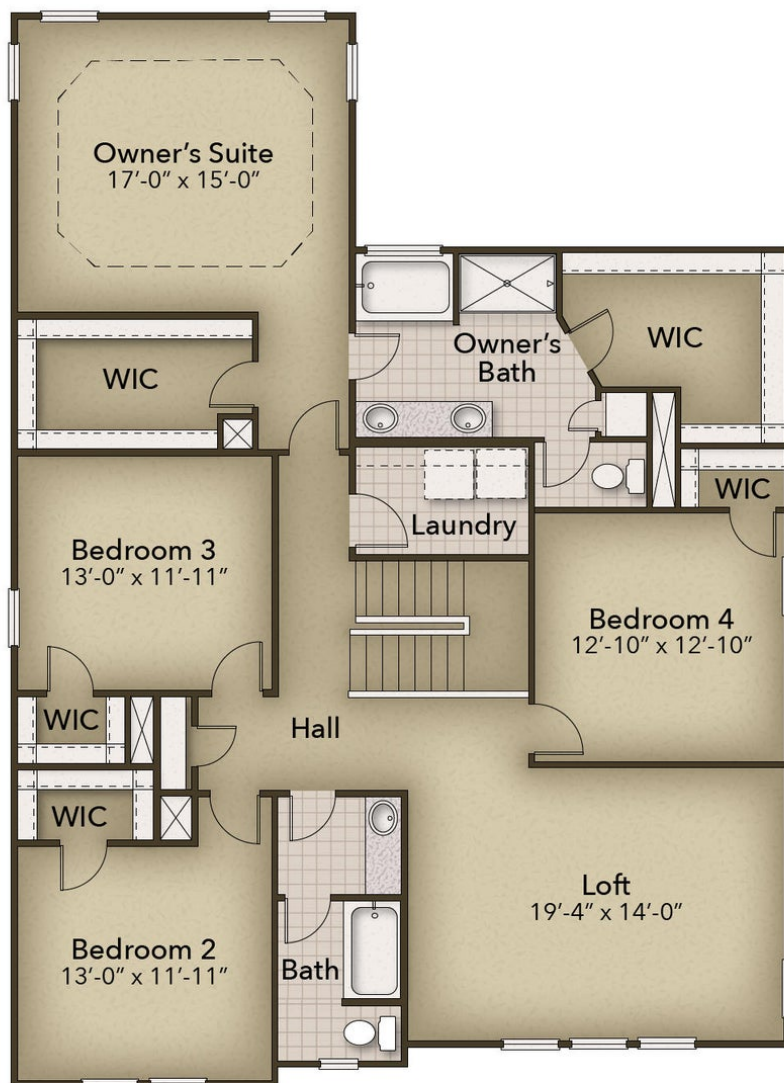


CONTACT US 757-550-2617

WWW.CESHOMES.COM



SECOND FLOOR



CONTACT US 757-550-2617

WWW.CESHOMES.COM

