



Bridgewater - Shorehaven Village Community

The Sunset Cove Floor Plan

Stroll into the Sunset Cove with nearly 1,817 square feet of first-floor coastal-inspired features. Upon entering from a large covered front porch, discover a foyer leading to the spacious great room. Enjoy an additional bedroom with a secondary bedroom just down the hall with a full bathroom in between. Create an intimate great room area with a tray ceiling and a gas fireplace. A large, gourmet island in the kitchen offers additional seating and a surplus of counter space for large dinner parties or cooking large meals. From the dining room, breeze through sliding glass doors onto a large covered porch. The Sunset Cove's owner's suite offers an enormous walk-in closet accompanied by a beautiful owner's bath with a deluxe seated shower. This model to fit your every need, the Sunset Cove is full of possibilities. Make the Sunset Cove the model you call "home" today!

\$489,900



3 Bedrooms



2.0 Bathrooms



1,817 Sq.Ft.



1 Stories

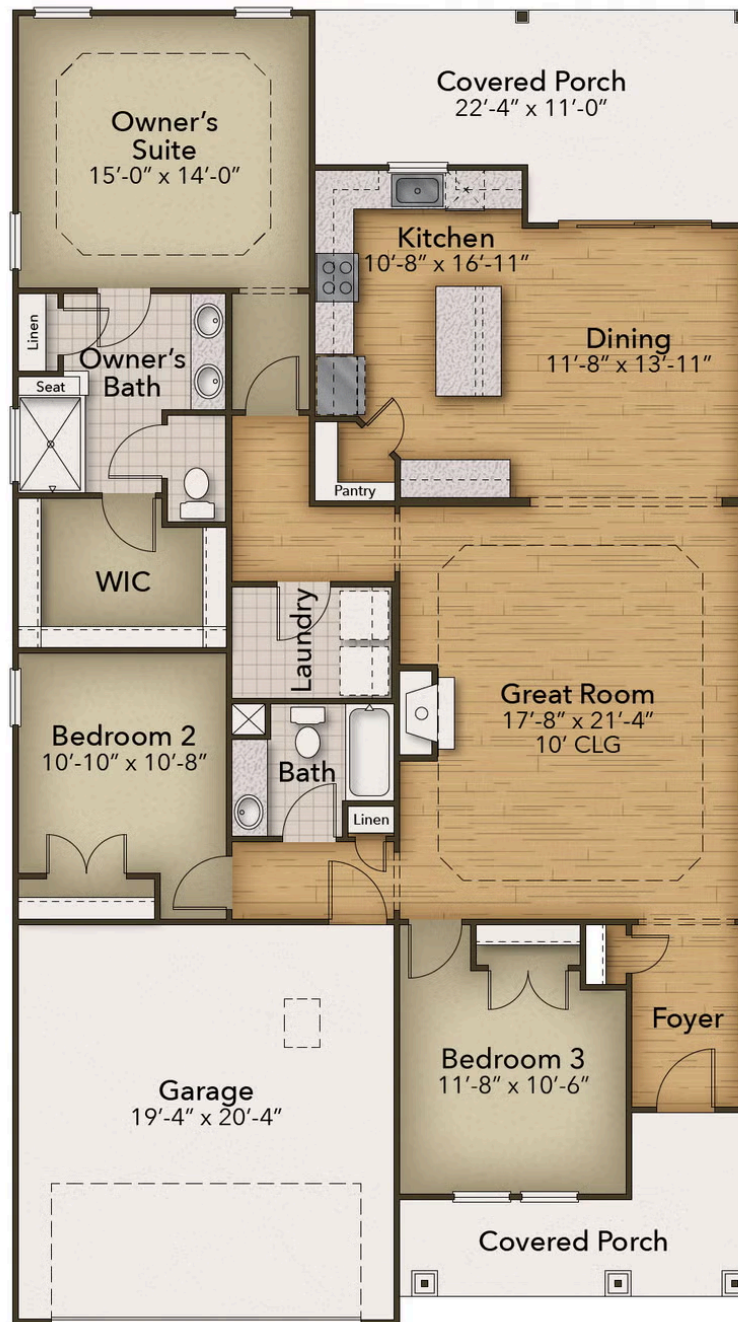


2 Car Garage

CONTACT US 757-550-2617

WWW.CESHOMES.COM





CONTACT US 757-550-2617

WWW.CESHOMES.COM

