

# From \$429,900

The Shorebreak is the perfect balance between outdoor living space and a coastal-inspired interior, encouraging you to slip off your sandals and relax. Starting at 1,938 square feet, this model offers ample space, up to four bedrooms, three bathrooms, and an optional second floor above an optional three-car garage. As you step inside from the covered front porch, you'll immediately find yourself in an open and inviting kitchen, dining, and great room area. The sliding glass doors seamlessly connect the interior ...

 **3 Bedrooms**

 **2.0 Bathrooms**

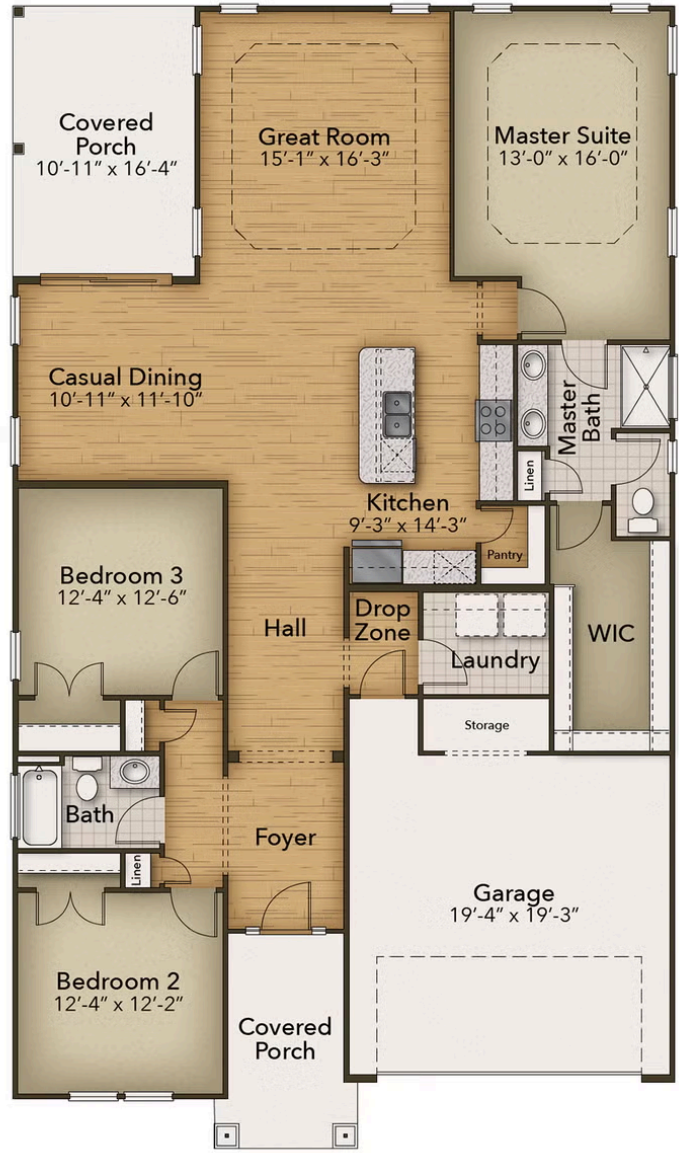
 **1,938 Sq. Ft.**

 **1 Stories**

 **2 Car Garage**

**CONTACT US 757-550-2617**  
**WWW.CESHOMES.COM**

FIRST FLOOR



CONTACT US 757-550-2617  
WWW.CESHOMES.COM