



## *From \$409,900*

Life is simply divine in The Mangrove model. A whopping 3,349 square feet of space results in a new home that's roomy enough for every member of the household. A buyer favorite, this plan offers up to five bedrooms and up to three full baths depending upon the layout you select. Downstairs offers the essential space your family needs. Choose to include a gourmet kitchen with extended counter and cabinet space, add a butler's pantry for additional space, or add a shower to the downstairs bathroom to create a full bath alongside the guest suite. The second level offers endless amounts of space for all. An Owner's Suite with enormous dual closets and a spa-like Owner's Bath makes for the perfect ...



**4 Bedrooms**



**2.5 Bathrooms**



**3,349 Sq.Ft.**



**2 Stories**

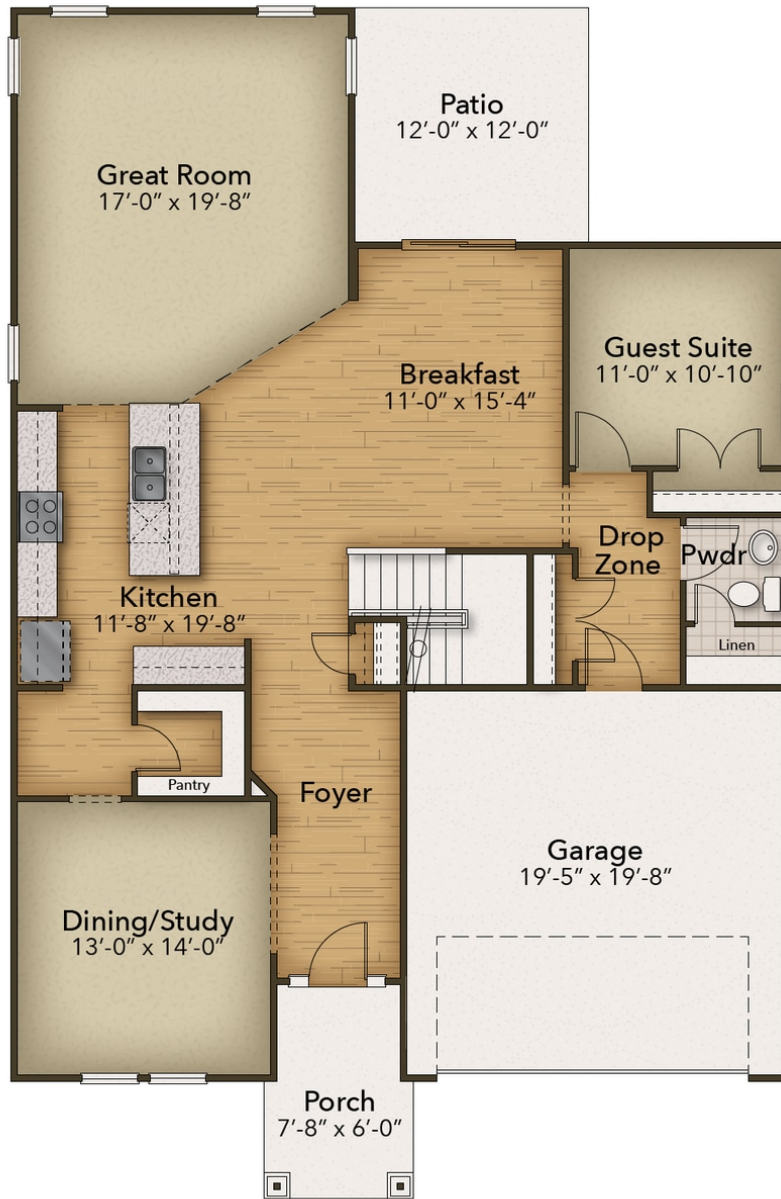


**2 Car Garage**

**CONTACT US 757-550-2617**

**WWW.CESHOMES.COM**

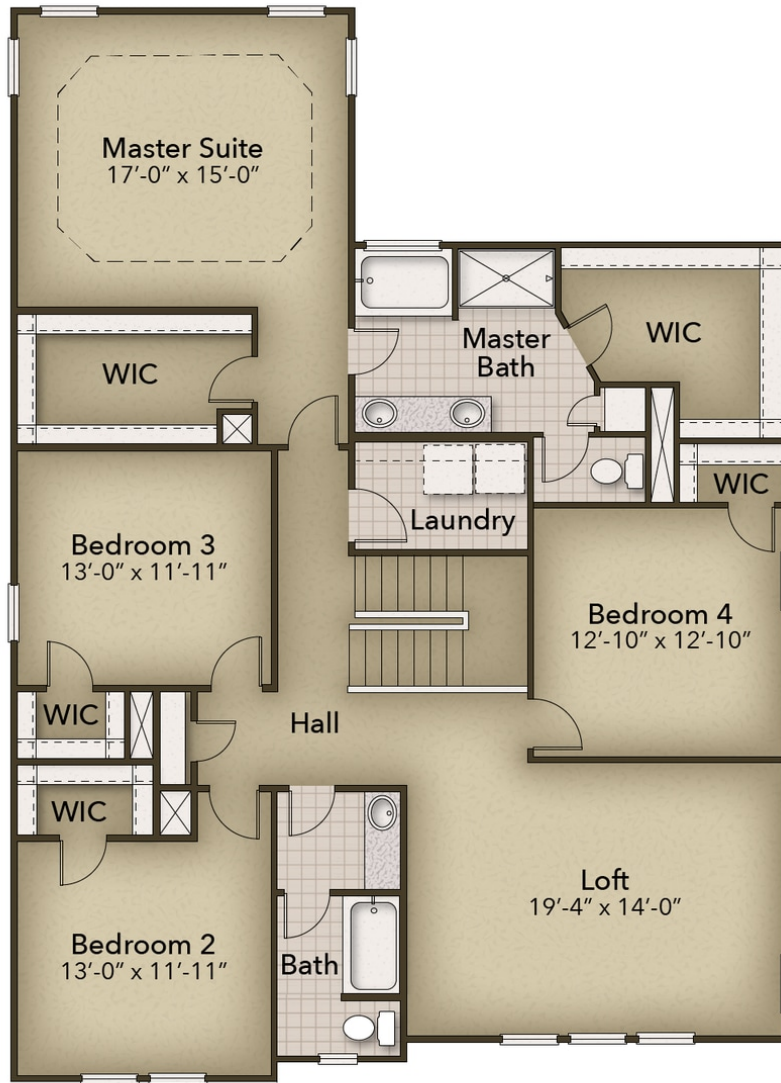




**CONTACT US 757-550-2617**

**WWW.CESHOMES.COM**





**CONTACT US 757-550-2617**

**WWW.CESHOMES.COM**

