



## Bridgewater - Waterside Village Community

### The Goldenrod Floor Plan

Walk into the Goldenrod with over 2,100 square feet of first-floor coastal-inspired features. Upon entering from a large covered front porch, discover a foyer with a tray ceiling leading to a spacious wide-open living area. Two bedrooms with large closets and a full bath are located on the left with an open dining area just ahead. An intricate coffer ceiling gives great detail to the dining area. A large, gourmet island in the kitchen offers additional seating and a surplus of counter space for large dinner parties or cooking large meals. Enjoy smaller meals with an extended breakfast area looking out onto the beautiful view of your backyard. From the great room, breeze through sliding glass doors onto a large covered porch. The Goldenrod's owner's suite offers an enormous walk-in closet accompanied by a beautiful owner's bath with a deluxe seated shower. This home offers a second floor with a spacious loft area. Make the Goldenrod the model you call "home" today!

**\$619,900**



**3 Bedrooms**



**2.0 Bathrooms**



**2,189 Sq.Ft.**



**1 Stories**



**2 Car Garage**

**CONTACT US 757-550-2617**

**WWW.CESHOMES.COM**



**FIRST FLOOR**

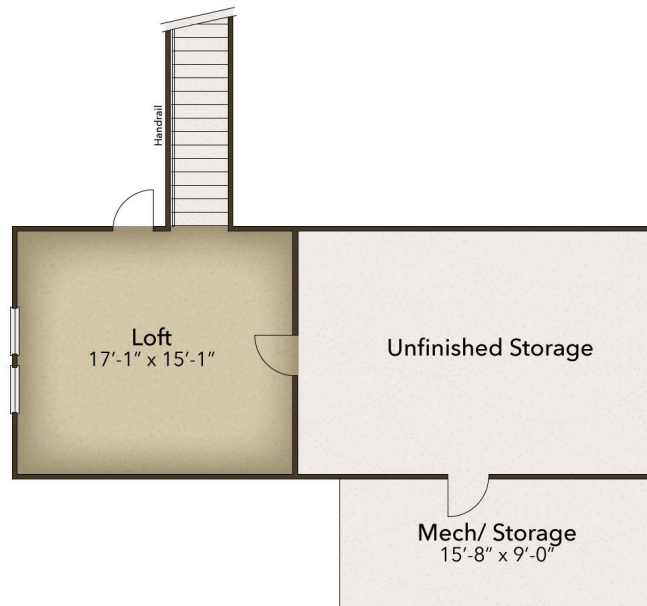


CONTACT US 757-550-2617

WWW.CESHOMES.COM



## SECOND FLOOR



CONTACT US 757-550-2617

WWW.CESHOMES.COM

