



Bridgewater - Waterside Village Community

The Birch Floor Plan

Inspired by the natural beauty of the surrounding area, the Birch offers three bedrooms and three baths within 2,500 square feet. This two-story model includes a first-floor master suite, enormous kitchen, outdoor living areas, loft, and ample storage space. Wide, open space connects the great room, casual dining, and extensive kitchen. Prepare meals on a large kitchen island with a view of your covered porch outside. A formal dining room offers intimate dinners or much-needed office space. Beyond the dining room, accompanied by a full bath, find a quiet guest bedroom ideal for visiting relatives. Fully enjoy the beauty of the coastal region with a 300 square foot covered porch just off the owner's suite. The owner's bedroom features an enormous walk-in closet accompanied by an indulgent owner's suite bath with a deluxe seated shower. Find a personal sanctuary with plenty of natural light and open space. The second floor provides a large flex space with a 23' wide loft. Easily imagine a media room or recreational room in this space with a second-story porch, as well. An additional bedroom, optional full bath, and storage room accompany the loft allowing ...

\$621,110



3 Bedrooms



3.0 Bathrooms



2,537 Sq.Ft.



2 Stories



2 Car Garage

FIRST FLOOR

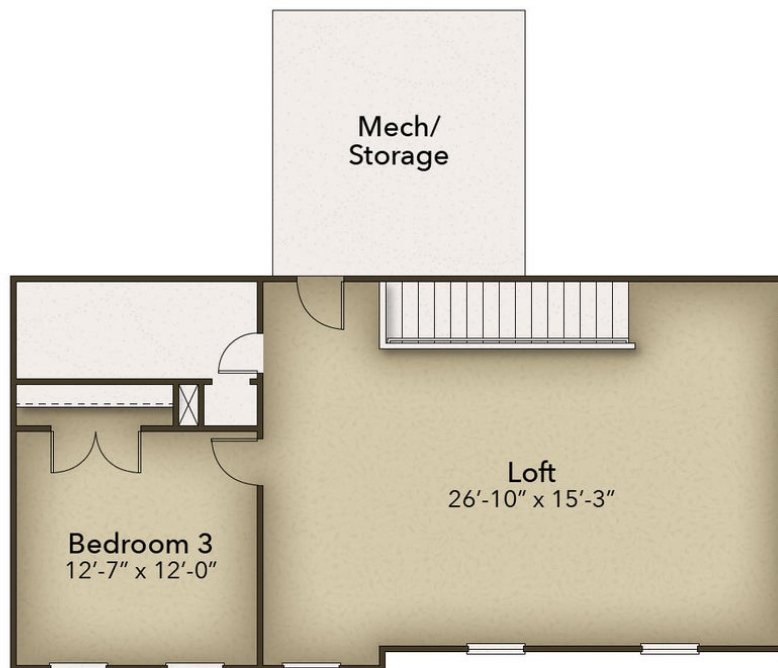


CONTACT US 757-550-2617

WWW.CESHOMES.COM



SECOND FLOOR



CONTACT US 757-550-2617

WWW.CESHOMES.COM

