



## Bridgewater - Waterside Village Community

### The Newberry Floor Plan

The Newberry is the perfect balance between outdoor living space and a coastal-inspired interior, encouraging you to slip off your Flip Flops and relax. Starting at 1,918 square feet, this model offers up to four bedrooms, three bathrooms, and an optional second floor with a loft, 4th bedroom, and bath. Step in from the Newberry's covered front porch to find an open kitchen, dining, and great room area. Breeze through sliding glass doors onto a 179 square foot covered porch, ideal for warm summer evenings or afternoon get-togethers. Through the foyer, you'll find a drop zone and laundry area. Drop-off beach chairs in the convenient storage space just inside the garage, as well. Across from the drop zone. Beyond the open living space, find a stunning master suite complete with a tray ceiling, an enormous walk-in closet, and a double vanity. For more space, add a second floor with floorplan options that include, a fourth bedroom, loft, unfinished storage area, or additional full...

**\$656,900**



**4 Bedrooms**



**3.0 Bathrooms**



**2,570 Sq.Ft.**



**2 Stories**



**2 Car Garage**

**CONTACT US 757-550-2617**

**WWW.CESHOMES.COM**



## FIRST FLOOR

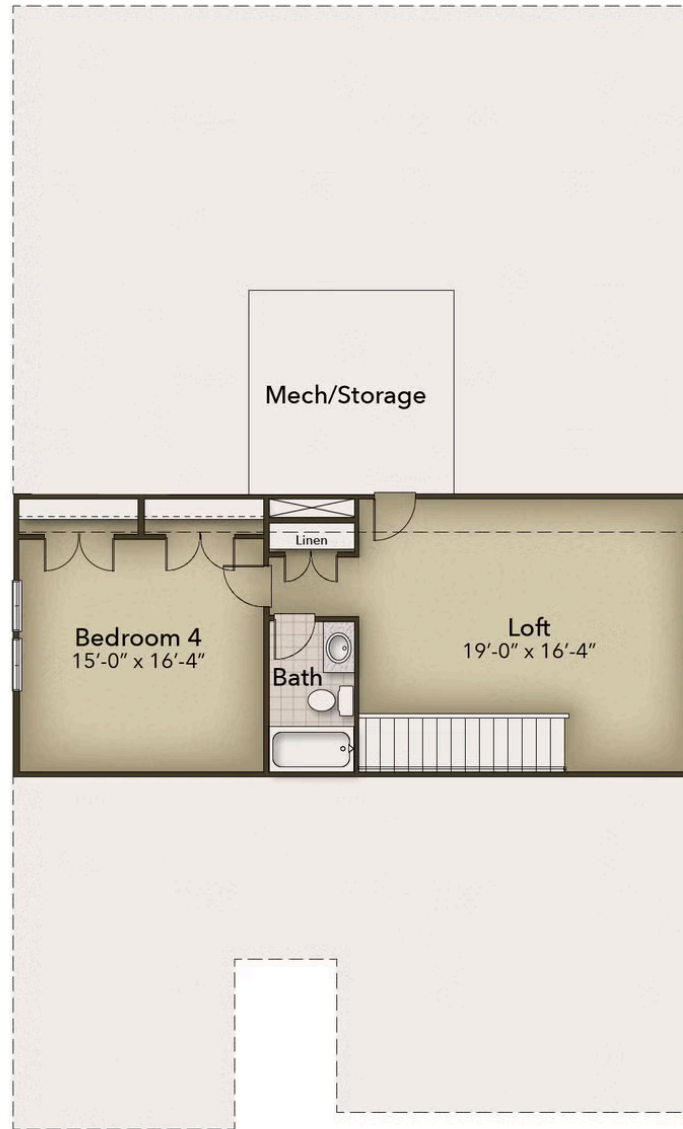


CONTACT US 757-550-2617

WWW.CHESHOMES.COM



## SECOND FLOOR



CONTACT US 757-550-2617

WWW.CHESHOMES.COM



Chesapeake Homes continuously improves home designs and reserves the right to modify home features and specifications without notice or obligation. Square footage and measurements are approximate. Renderings of elevations are artist's concepts. Floor plans vary per elevation. Chesapeake Homes standard features vary by home design and location, please refer to the included features sheet for the community to define specifications. This brochure is for illustrative purposes and not part of the legal contract. Please ask Sales Associate for complete details. © 2026 Chesapeake Homes. Current information as 4th January 2026