



From \$514,900

Inspired by the natural beauty of the surrounding area, the Birch offers three bedrooms and three baths within 2,700 square feet. This two-story model includes a first-floor master suite, enormous kitchen, outdoor living areas, loft, and ample storage space. Wide, open space connects the great room, casual dining, and extensive kitchen. Prepare meals on a large kitchen island with a view of your covered porch outside. A formal dining room offers an optional set of French doors perfect for intimate dinners or much-needed office space. Beyond the dining room, accompanied by a full bath, find a quiet guest bedroom ideal for visiting relatives or an in-law suite. Fully enjoy the beauty of the coastal region with a 300 square foot covered porch or sunroom and covered porch just off the owner's suite. The owner's bedroom features an enormous walk-in closet accompanied by an indulgent owner's suite bath with multiple options for a deluxe seated shower or enclosed water closet. Find a personal sanctuary with plenty of natural light and open space. The second floor provides a large flex space with a 23' wide loft. Easily imagine a media room or

...



3 Bedrooms



3.0 Bathrooms



2,704 Sq.Ft.



2 Stories



2 Car Garage

CONTACT US 757-550-2617

WWW.CESHOMES.COM



Chesapeake Homes continuously improves home designs and reserves the right to modify home features and specifications without notice or obligation. Square footage and measurements are approximate. Renderings of elevations are artist's concepts. Floor plans vary per elevation. Chesapeake Homes standard features vary by home design and location, please refer to the included features sheet for the community to define specifications. This brochure is for illustrative purposes and not part of the legal contract. Please ask Sales Associate for complete details. © 2025 Chesapeake Homes. Current information as 3rd July 2025

FIRST FLOOR

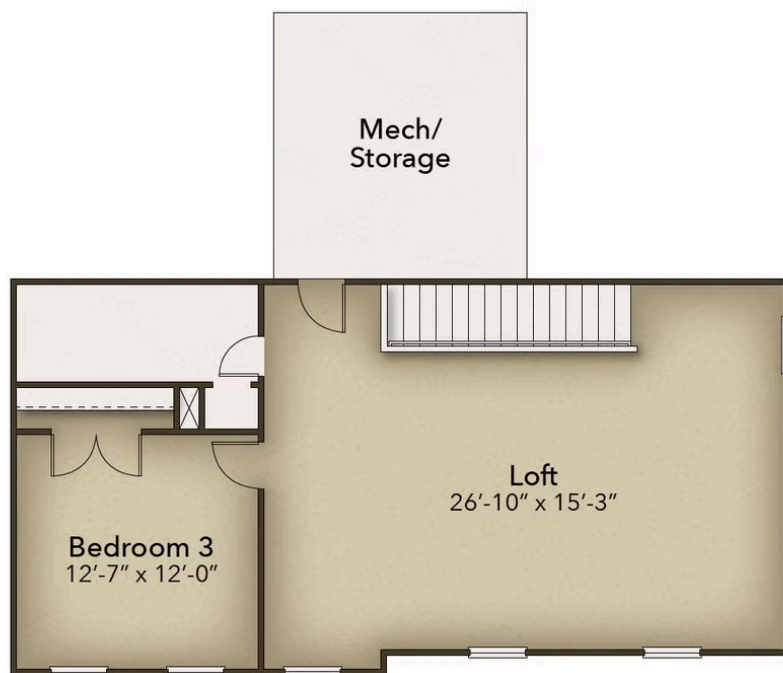


CONTACT US 757-550-2617

WWW.CHESHOMES.COM



SECOND FLOOR



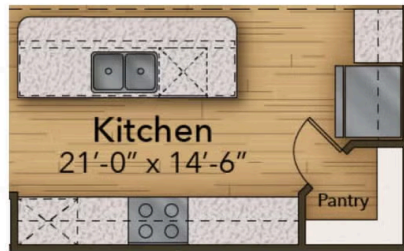
CONTACT US 757-550-2617

WWW.CESHOMES.COM

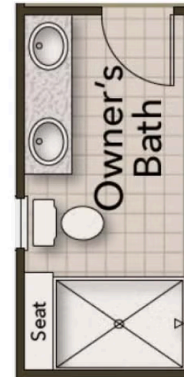


Chesapeake Homes continuously improves home designs and reserves the right to modify home features and specifications without notice or obligation. Square footage and measurements are approximate. Renderings of elevations are artist's concepts. Floor plans vary per elevation. Chesapeake Homes standard features vary by home design and location, please refer to the included features sheet for the community to define specifications. This brochure is for illustrative purposes and not part of the legal contract. Please ask Sales Associate for complete details. © 2025 Chesapeake Homes. Current information as 3rd July 2025

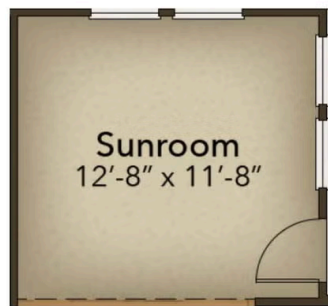
OPTIONS



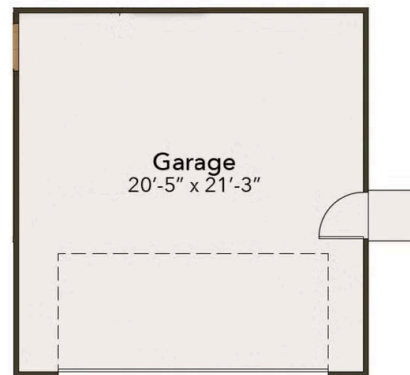
Gourmet Kitchen



Deluxe Owner's Bath



Sunroom



Garage Pedestrian Door

CONTACT US 757-550-2617

WWW.CHESHOMES.COM



Chesapeake Homes continuously improves home designs and reserves the right to modify home features and specifications without notice or obligation. Square footage and measurements are approximate. Renderings of elevations are artist's concepts. Floor plans vary per elevation. Chesapeake Homes standard features vary by home design and location, please refer to the included features sheet for the community to define specifications. This brochure is for illustrative purposes and not part of the legal contract. Please ask Sales Associate for complete details. © 2025 Chesapeake Homes. Current information as 3rd July 2025