



The Paired Villas at Bridgewater Community

The Gulfview Floor Plan

As you enter through the foyer, a hallway to your right leads to a comfortable secondary bedroom featuring a spacious walk-in closet, ideal for guests, family, or a home office. Across the hall, you'll find a full bathroom complete with a convenient linen closet for added storage. Continuing through the home, you'll discover a spacious kitchen with a stunning island that serves as the heart of the home, perfect for everyday living and entertaining. With generous counter space and a natural gas stove, this kitchen is designed to make both daily meals and special gatherings feel effortless. The layout flows into the inviting great room, creating a warm space to relax and spend time together. Tucked at the rear of the home, the private Owner's Suite offers a peaceful retreat with a walk-in closet, double bowl vanity, and a separate enclosed toilet area for added comfort. Welcome to life in The Gulfview!

\$334,900



2 Bedrooms



2.0 Bathrooms



1,299 Sq.Ft.



1 Stories

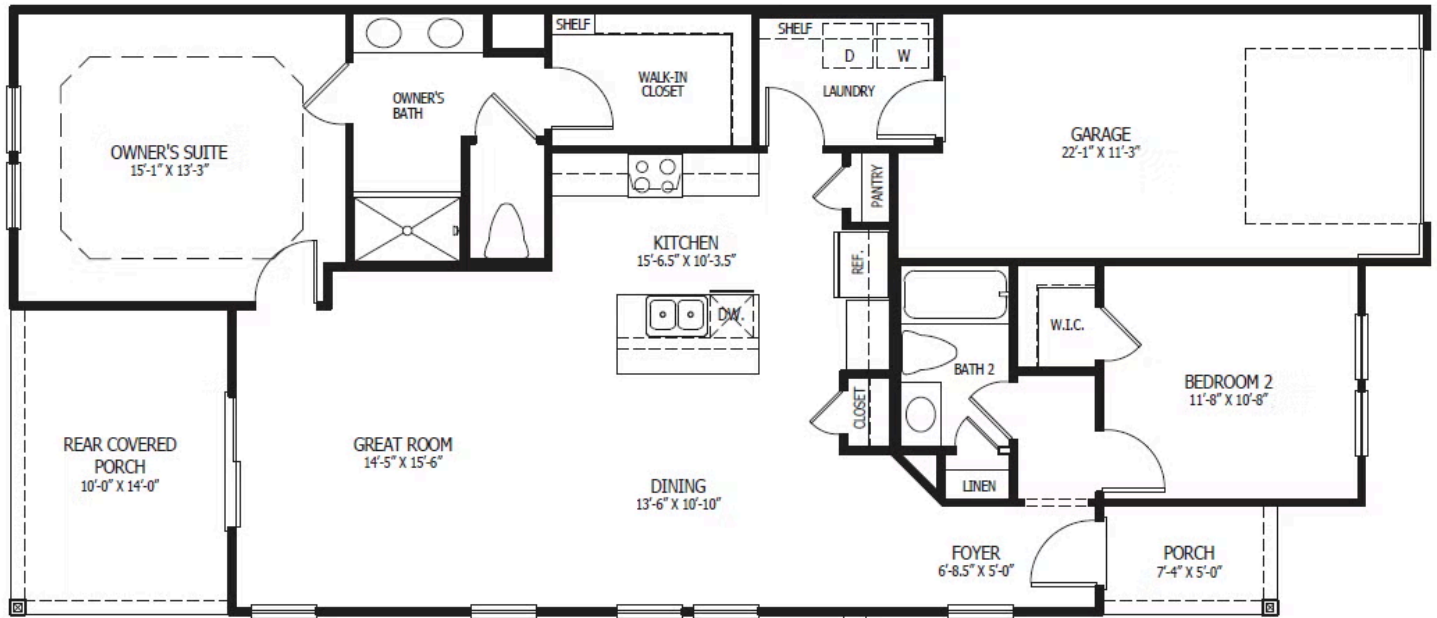


1 Car Garage

CONTACT US 757-550-2617

WWW.CESHOMES.COM





CONTACT US 757-550-2617

WWW.CESHOMES.COM

