



## The Paired Villas at Bridgewater Community

### The Gulfview Floor Plan

As you enter through the foyer, a hallway to your right leads to a cozy bedroom featuring a walk-in closet. Across the hall is a full bathroom, complete with a convenient linen closet. Continuing through the home, you'll discover a spacious kitchen with a stunning island, perfect for hosting holiday gatherings. The kitchen is equipped with a MOEN Brushed Nickel pull-out faucet and a built in soap dispenser. Prepare delicious meals on your natural gas stove, then gather with loved ones for dinner. The journey continues into the inviting great room, where you can unwind after a long day, cozy up, and enjoy your favorite shows. But the comfort doesn't end there! At the rear of the house, you'll find the Owner's Suite, a private retreat with a walk-in closet, a double bowl sink and a separate enclosed toilet room. The bathrooms are equipped with MOEN brushed nickel bath accessories and faucets, offering a modern and elegant touch throughout the home. Welcome to your new life in The...

**\$339,900**



**2 Bedrooms**



**2.0 Bathrooms**



**1,299 Sq.Ft.**



**1 Stories**

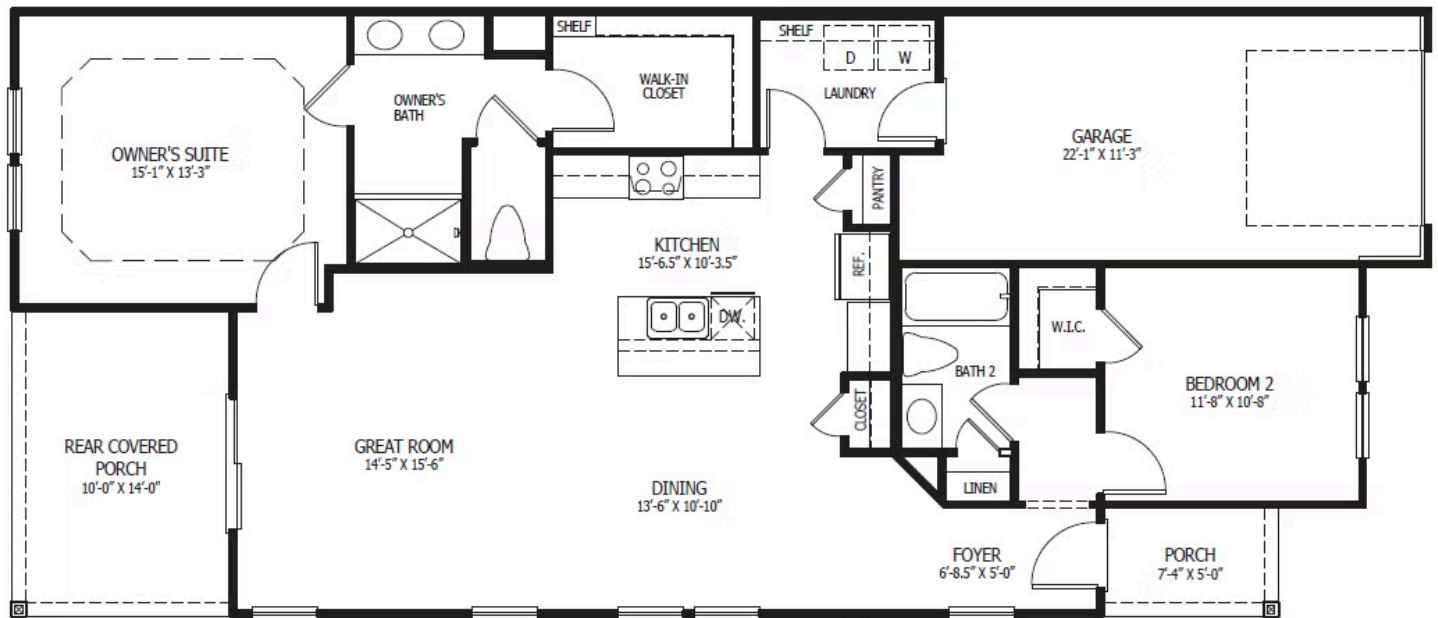


**1 Car Garage**

**CONTACT US 757-550-2617**

**WWW.CESHOMES.COM**





CONTACT US 757-550-2617

WWW.CESHOMES.COM

