



The Paired Villas at Bridgewater Community

The Bayside Floor Plan

As you enter through the foyer, convenient garage access is located just to your left, making everyday arrivals and unloading simple and efficient. Continue into the heart of the home, where a spacious kitchen with a beautiful island creates the perfect setting for both daily living and special gatherings. With ample counter space and a natural gas stove, this kitchen is designed for preparing meals with ease while staying connected to family and guests. Just off the kitchen, a hallway leads to a secondary bedroom tucked privately at the end, complete with a walk-in closet for added storage. Nearby, a full bathroom with modern finishes provides comfort and convenience for guests or household members. The great room opens beyond the kitchen, offering a welcoming space to relax, unwind, or enjoy your favorite shows in comfort. At the rear of the home, the private Owner's Suite serves as a peaceful retreat designed with relaxation in mind. This spacious suite features an attached...

\$324,900



2 Bedrooms



2.0 Bathrooms



1,324 Sq.Ft.



1 Stories



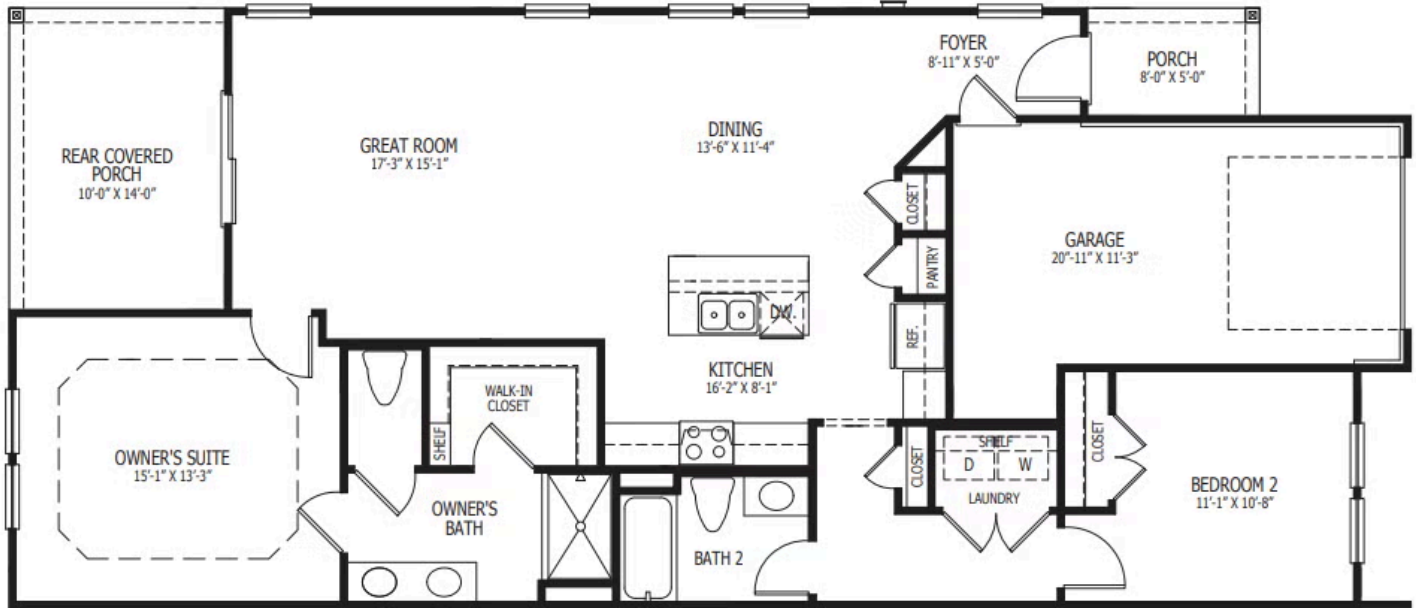
1 Car Garage

CONTACT US 757-550-2617

WWW.CESHOMES.COM



SIMILAR HOME - BEDROOM



CONTACT US 757-550-2617

WWW.CESHOMES.COM

