



## The Paired Villas at Bridgewater Community

### The Bayside Floor Plan

As you enter through the foyer, a door to the garage is conveniently located to your left. Continuing through the home, you'll discover a spacious kitchen featuring a beautiful island—perfect for hosting holiday gatherings. The kitchen is equipped with a MOEN brushed nickel faucet and a built-in soap dispenser, adding both style and functionality. Prepare delicious meals on your natural gas stove and enjoy memorable family dinners. To the left of the kitchen, a hallway leads to a bedroom at the end, complete with a walk-in closet on your left. On the right, you'll find a full bathroom with a tub, equipped with elegant MOEN brushed nickel bath accessories and faucets for a modern touch. Moving further into the home, the great room invites you to relax after a long day. Cozy up and enjoy your favorite shows in this welcoming space. But the comfort doesn't end there! At the rear of the house, the Owner's Suite awaits—a private retreat with an attached bathroom, walk-in closet, and an...

**\$331,900**



**2 Bedrooms**



**2.0 Bathrooms**



**1,299 Sq.Ft.**



**1 Stories**



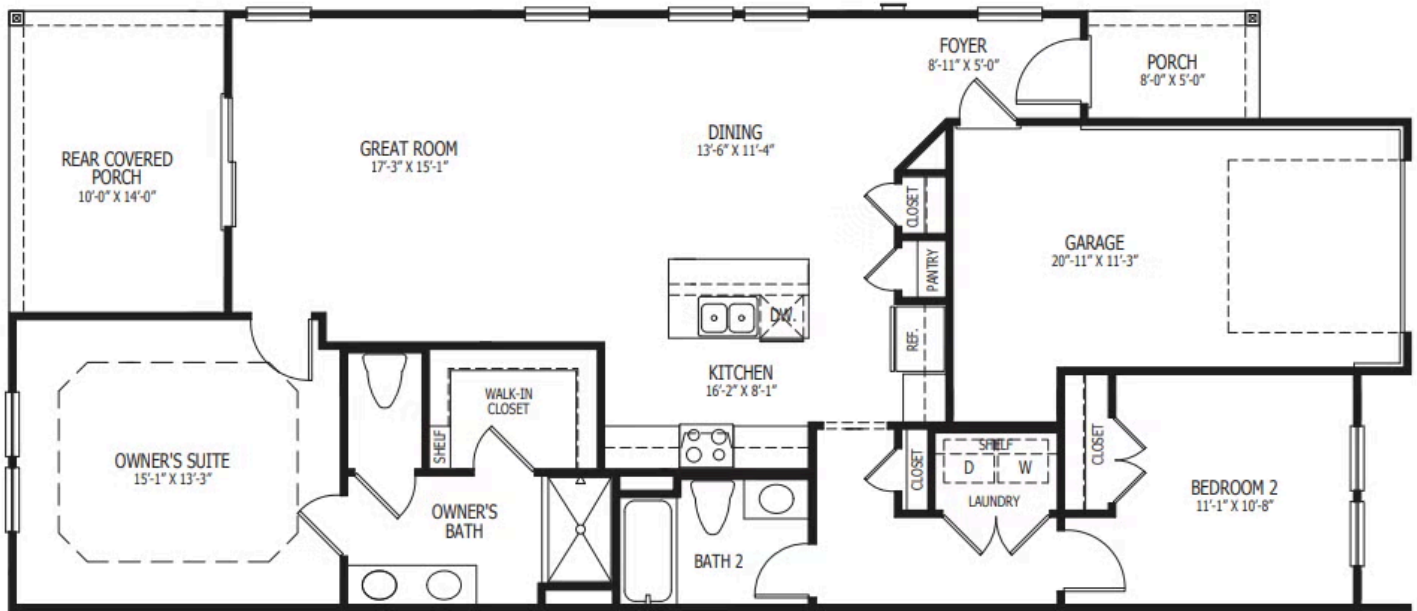
**1 Car Garage**

**CONTACT US 757-550-2617**

**WWW.CESHOMES.COM**



## SIMILAR HOME - BEDROOM



CONTACT US 757-550-2617

[WWW.CHESHOMES.COM](http://WWW.CHESHOMES.COM)

