



Heritage Park at Longs Community

The Hibiscus Floor Plan

With 1,782 square feet of living space, the Hibiscus is spacious and offers several options that hold beauty and utility in high regard. Upon entering the home, you'll be greeted by the foyer, which leads to the wide-open downstairs living space. The open-concept layout and large kitchen island lend themselves to always being the home's gathering place. When you're ready to get outside, enjoy the ocean air while relaxing on your patio or rear-covered porch. Enjoy a spacious owner's retreat with a tray ceiling and a deluxe seated shower. On one of those rare chilly evenings, you have the optional gas fireplace that can only enhance the great room's coziness. Upstairs, you will find a bedroom, open loft, and storage space. The Hibiscus is perfect for your family or revolving door of visitors who can't wait to enjoy coastal living with you. *PHOTOS OF SIMILAR HOME*

 3 Bedrooms

 2.5 Bathrooms

 1,932 Sq. Ft.

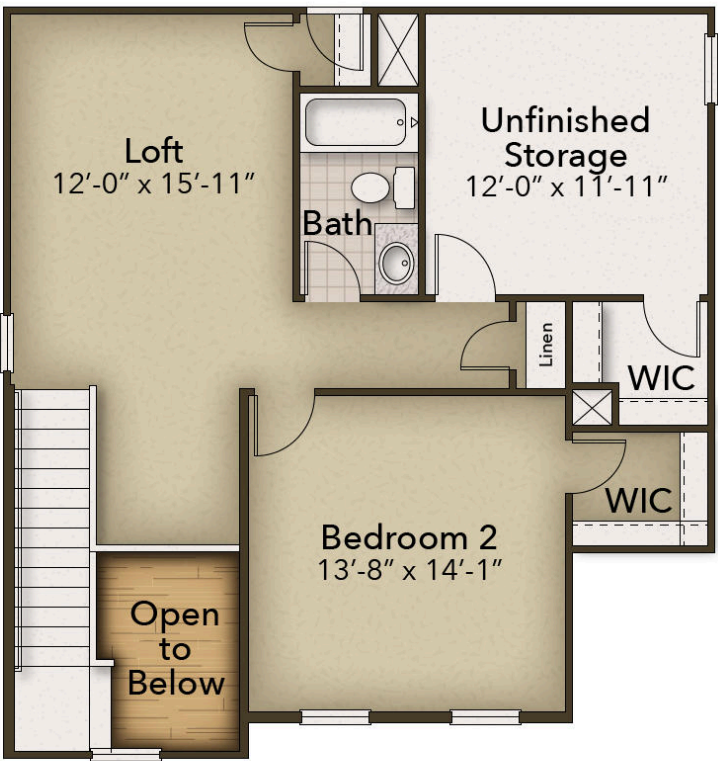
 2 Stories

FIRST FLOOR



CONTACT US 757-550-2617
WWW.CESHOMES.COM

SECOND FLOOR



CONTACT US 757-550-2617

WWW.CESHOMES.COM