



Heritage Park at Longs Community The Hibiscus Floor Plan

With 1,782 square feet of living space, the Hibiscus is spacious and offers several options that hold beauty and utility in high regard. Upon entering the home, you'll be greeted by the foyer which leads you to the wide-open downstairs living space. The open-concept layout and large kitchen island lend themselves to always being the home's gathering place. When you're ready to get outside, enjoy the ocean air while relaxing on your patio or rear-covered porch. Enjoy a spacious owner's retreat with an optional tray ceiling and an optional deluxe seated shower. On one of those rare chilly evenings, you have the optional gas fireplace that can only enhance the great room's coziness. Add a third car garage for extra storage space! Upstairs, you will find a bedroom, open loft, and storage space, the latter two spaces can be turned into additional bedrooms. The Hibiscus is perfect for your family or revolving door of visitors who can't wait to enjoy coastal living with you.



3 Bedrooms



2.5 Bathrooms



1,944 Sq.Ft.



2 Stories



2 Car Garage

CONTACT US 757-550-2617

WWW.CESHOMES.COM



FIRST FLOOR

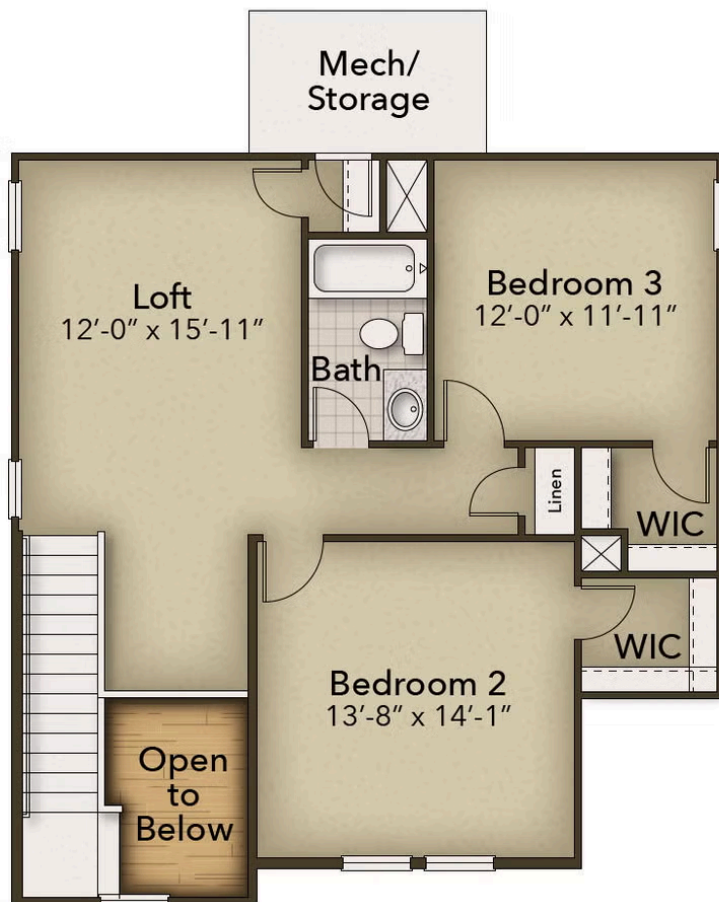


CONTACT US 757-550-2617

WWW.CESHOMES.COM



SECOND FLOOR



CONTACT US 757-550-2617

WWW.CESHOMES.COM

