



Heritage Park at Longs Community

The Wren Floor Plan

The Wren is the perfect combination of an open floor plan and functionality starting with over 1,790 square feet. Upon entering from the covered front porch, the wide-open foyer leads to a generous dining area, kitchen, and great room. A private study or optional third bedroom is on the left as you enter. To personalize this space, choose from a wide range of options, including a gourmet island, tray ceiling, beverage center, and extended rear porch. Whether you're looking for an abundance of counter space, added seating, or a more intimate gathering area, this model's options will serve as the solution. Through the foyer, you'll find a large drop zone with options for additional shelving, and a bench for seating while you unload beach accessories or sand-filled clothes. Beyond the open living space, find a stunning master suite complete with a tray ceiling, enormous walk-in closet, double vanity, and options for a seated shower or deep soaking tub. For more space, add a second floor with floorplan options that include, a fourth bedroom, loft, unfinished storage area, or additional full bathroom. Utilize this space for visiting guests, storage, ...



2 Bedrooms



2.0 Bathrooms



1,792 Sq.Ft.



1 Stories



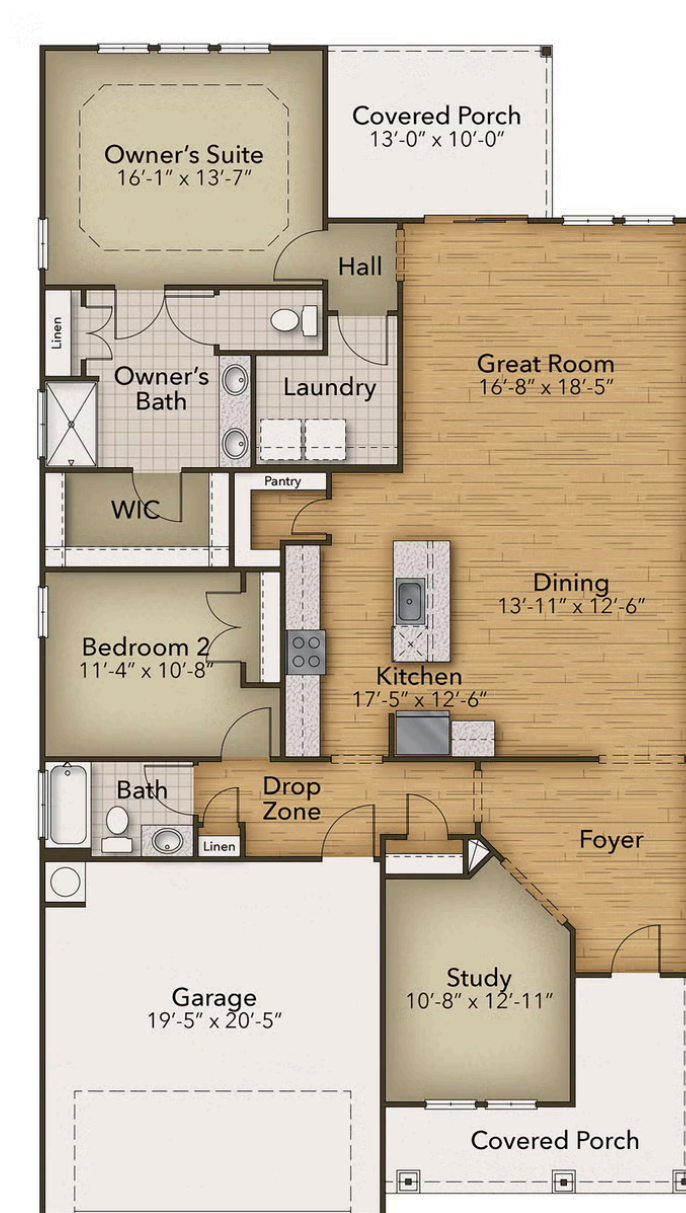
2 Car Garage

CONTACT US 757-550-2617

WWW.CESHOMES.COM



FIRST FLOOR



CONTACT US 757-550-2617

WWW.CESHOMES.COM

