



## Heritage Park at Longs Community

### The Boardwalk Floor Plan

Stroll into the Boardwalk with nearly 2,100 square feet of first-floor coastal-inspired features. Upon entering from a large covered front porch, you will find two bedrooms with large closets and a full bath. Across from these bedrooms you will find the upgraded coffer ceilings in the dining room. A large island in the kitchen offers additional seating and a surplus of counter space for dinner parties or cooking large meals. From the great room, breeze through sliding glass doors onto a large covered porch. The Boardwalk's owner's suite offers an enormous walk-in closet accompanied by a beautiful owner's bath with the added deluxe seated shower. Make the Boardwalk the model you call "home" today! \*\*Photos of a similar home

**\$384,900**



**3 Bedrooms**



**2.0 Bathrooms**



**2,189 Sq.Ft.**



**1 Stories**



**2 Car Garage**

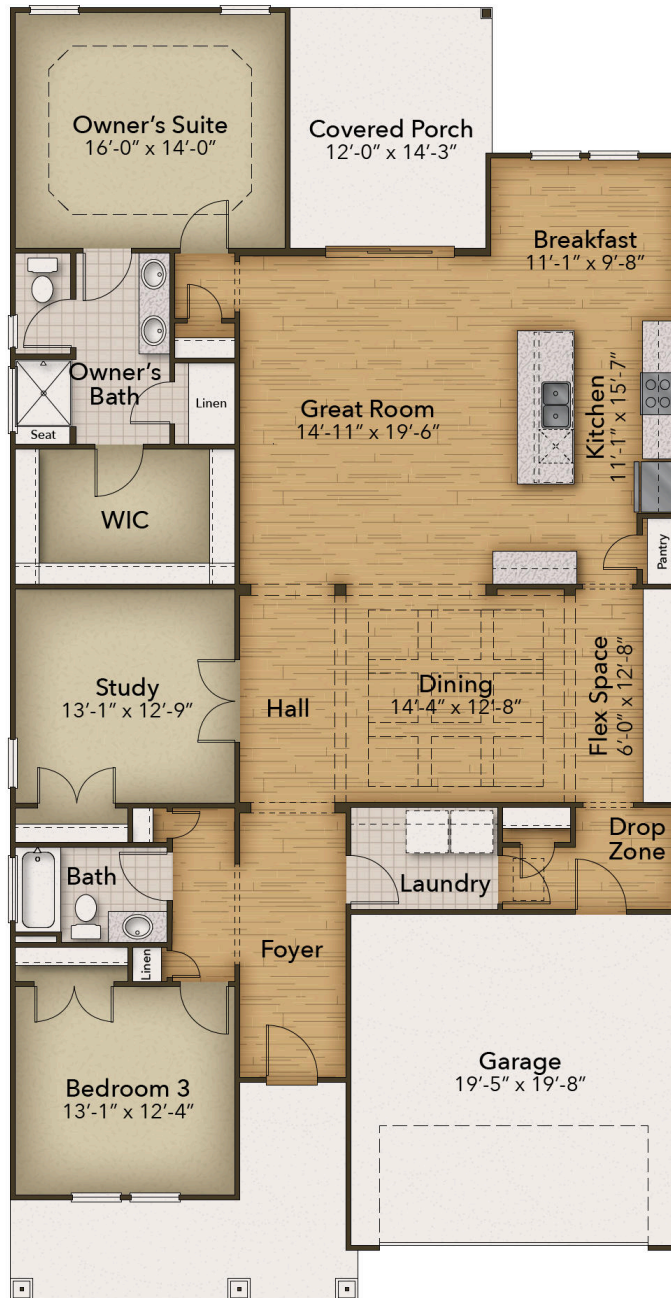
**CONTACT US 757-550-2617**

**WWW.CESHOMES.COM**



Chesapeake Homes continuously improves home designs and reserves the right to modify home features and specifications without notice or obligation. Square footage and measurements are approximate. Renderings of elevations are artist's concepts. Floor plans vary per elevation. Chesapeake Homes standard features vary by home design and location, please refer to the included features sheet for the community to define specifications. This brochure is for illustrative purposes and not part of the legal contract. Please ask Sales Associate for complete details. © 2025 Chesapeake Homes. Current information as 12th September 2025

## FIRST FLOOR



CONTACT US 757-550-2617

WWW.CHESHOMES.COM



Chesapeake Homes continuously improves home designs and reserves the right to modify home features and specifications without notice or obligation. Square footage and measurements are approximate. Renderings of elevations are artist's concepts. Floor plans vary per elevation. Chesapeake Homes standard features vary by home design and location, please refer to the included features sheet for the community to define specifications. This brochure is for illustrative purposes and not part of the legal contract. Please ask Sales Associate for complete details. © 2025 Chesapeake Homes. Current information as 12th September 2025