



## Heritage Park at Longs Community

### The Primrose Floor Plan

Welcome to the Primrose! Step into over 1,600 square feet of luxurious first-floor living space. Upon entering from the covered porch, you'll be greeted by 2 bedrooms and a full bath on your left – perfect for hosting guests in their own serene retreat. Continuing on, you'll discover a harmonious flow between the kitchen, dining room, and great room. A stunning kitchen island offers additional seating and counter space for all your culinary needs and entertaining endeavors. At the rear of the home, you'll find the tucked-away owner's suite featuring a tray ceiling, a spacious walk-in closet, and an elegant owner's bathroom. Savor balmy summer evenings with loved ones on your rear-covered porch. Enjoy upgraded features throughout the home such as LVP flooring in the foyer, kitchen, dining room, living room and primary bath. As well as shaker-style cabinets, stainless appliances, and quartz countertops. Embrace the comfort and elegance of the Primrose – make it your home today!



**3 Bedrooms**



**2.0 Bathrooms**



**1,605 Sq.Ft.**



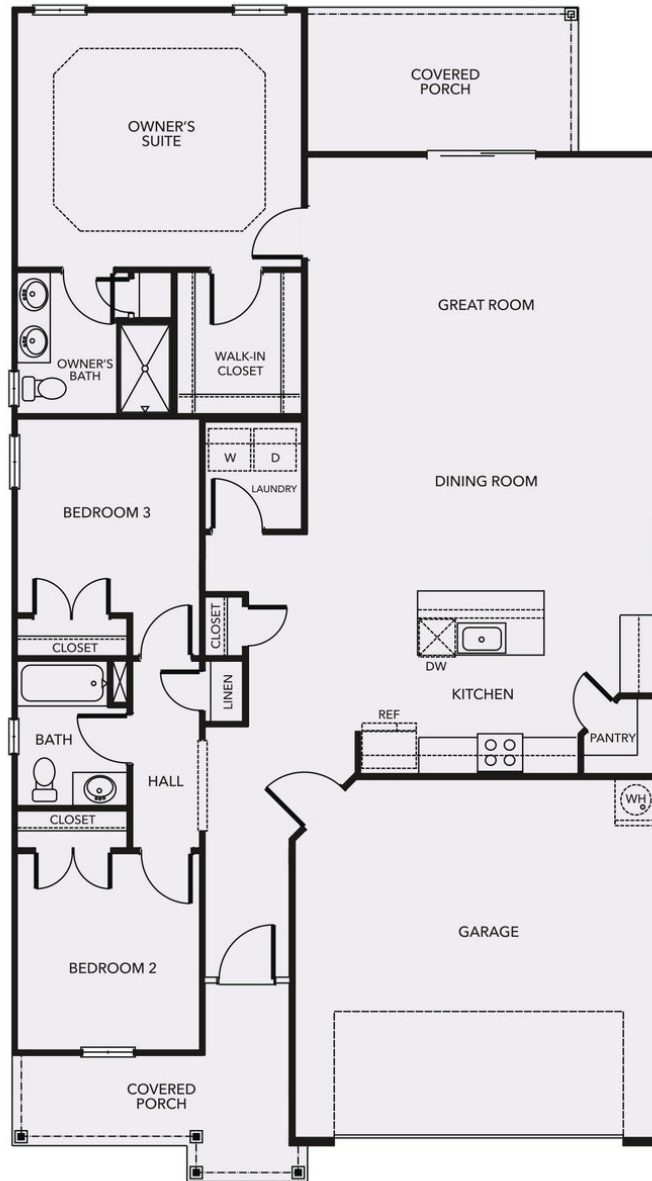
**1 Stories**



**2 Car Garage**

**CONTACT US 757-550-2617**

**WWW.CESHOMES.COM**



**CONTACT US 757-550-2617**

**WWW.CESHOMES.COM**

