



Heritage Park at Longs Community

The Primrose Floor Plan

Welcome to the Primrose! Step into over 1,600 square feet of luxurious first-floor living space. Enjoy upgraded features throughout the home such as LVP flooring in the foyer, kitchen, dining room, living room and primary bath. As well as shaker style cabinets, stainless appliances and quartz countertops. Upon entering from the covered porch, you'll be greeted by 2 bedrooms and a full bath on your left - perfect for hosting guests in their own serene retreat. Continuing on, you'll discover a harmonious flow between the kitchen, dining room, and great room. A stunning kitchen island offers additional seating and counter space for all your culinary needs and entertaining endeavors. Derby shale cabinets add beauty to the kitchen, creating a spacious and relaxing atmosphere. At the rear of the home, you'll find the tucked-away owner's suite featuring a tray ceiling, a spacious walk-in closet, and an elegant owner's bathroom. Savor balmy summer evenings with loved ones on your rear covered porch. The soothing grey tones in the home, from the reactive pewter carpet to the quartz countertops and Chateau bath faucet, promote a seamless blend of beauty and comfort ...

\$314,900



3 Bedrooms



2.0 Bathrooms



1,605 Sq.Ft.



1 Stories

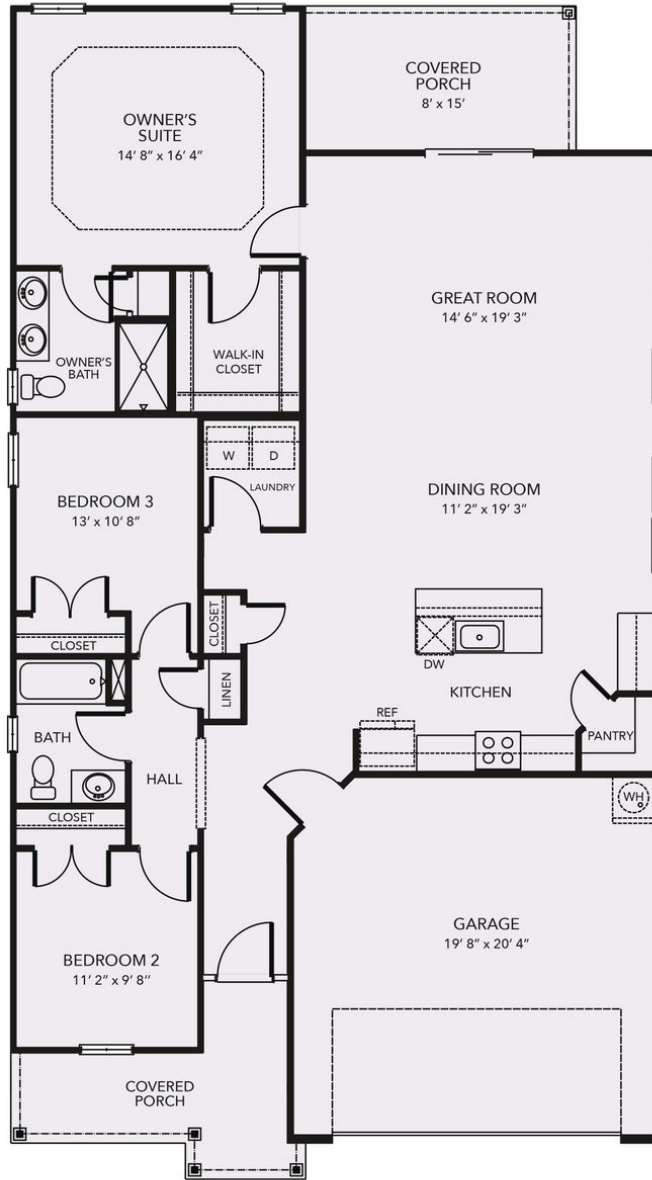


2 Car Garage

CONTACT US 757-550-2617

WWW.CESHOMES.COM





CONTACT US 757-550-2617

WWW.CESHOMES.COM

