



Heritage Park at Longs Community

The Camellia Floor Plan

Step into the Camellia, a stunning home boasting nearly 1,600 square feet of living space. Discover the inviting first-floor living area featuring three bedrooms, two full baths, and ample storage with plenty of closets. Enjoy upgraded features throughout the home such as LVP flooring in the foyer, kitchen, dining room, living room and primary bath. As well as shaker style cabinets, stainless appliances and quartz countertops. Upon entering from the covered porch, you'll find a convenient study on your right for all your office needs. The kitchen, dining room, and great room seamlessly connect, with a spacious kitchen island providing extra seating and counter space. Derby shale cabinets add beauty to the kitchen, creating a spacious and relaxing atmosphere. Moving through the kitchen, you'll come across two bedrooms, a full bath, and the laundry room tucked away for privacy. The owner's suite, featuring tray ceilings for added elegance, awaits off the great room, complete with a large walk-in closet and luxurious owner's bath. The soothing grey tones in the home, from the reactive pewter carpet to the quartz countertops and Chateau bath faucet, promote a seamless blend of beauty and comfort throughout. ...

\$308,900



3 Bedrooms



2.0 Bathrooms



1,587 Sq.Ft.



1 Stories

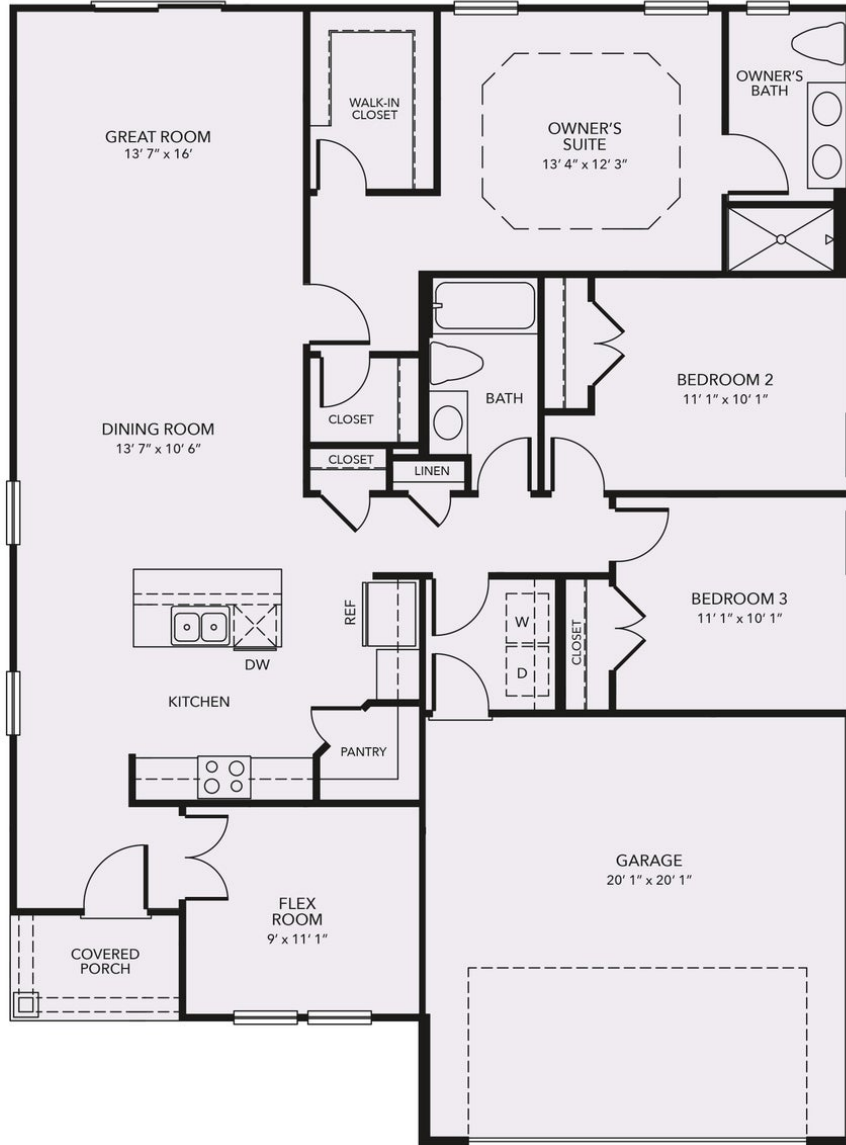


2 Car Garage

CONTACT US 757-550-2617

WWW.CESHOMES.COM





CONTACT US 757-550-2617

WWW.CESHOMES.COM

