

From \$301,900

Starting at 1,700 square feet, the Coastline is a spacious retreat complete with coastal-inspired architectural accents, outdoor living areas, and an enormous great room. This unique model offers an optional second floor, creating a home that features up to four bedrooms and four full bathrooms. Enter the Coastline from a covered front porch or two-car garage and easily unload in a large mudroom area with an optional bench for seating. Follow the foyer to the great room and connecting dining area, which makes for an enormous space with an optional gas fireplace. Personalize your kitchen in this model with the choice between two floorplan options, both of which include a grand center island. From the dining area transition to either a picturesque covered porch, which is made more intimate with an optional outdoor fireplace, or an optional sunroom that utilizes this space year-round. Here, you'll enjoy peaceful evenings or a morning sunrise right from your back door! The owners' suite, among two additional first-floor bedrooms, features his and her walk-in closet, tray ceiling, double vanity, and deluxe seated shower option. Choose to add a third full bathroom within the third bedroom for an ...



3 Bedrooms



2.0 Bathrooms



1,714 Sq.Ft.



1 Stories



2 Car Garage

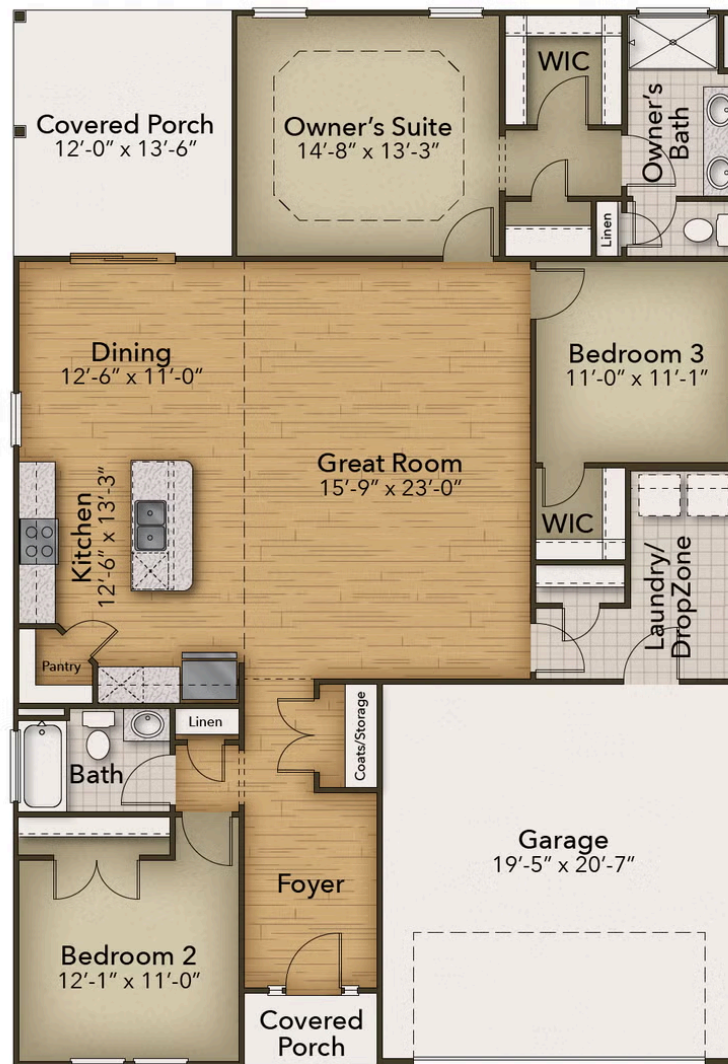
CONTACT US 757-550-2617

WWW.CESHOMES.COM



Chesapeake Homes continuously improves home designs and reserves the right to modify home features and specifications without notice or obligation. Square footage and measurements are approximate. Renderings of elevations are artist's concepts. Floor plans vary per elevation. Chesapeake Homes standard features vary by home design and location, please refer to the included features sheet for the community to define specifications. This brochure is for illustrative purposes and not part of the legal contract. Please ask Sales Associate for complete details. © 2025 Chesapeake Homes. Current information as 24th December 2025

FIRST FLOOR

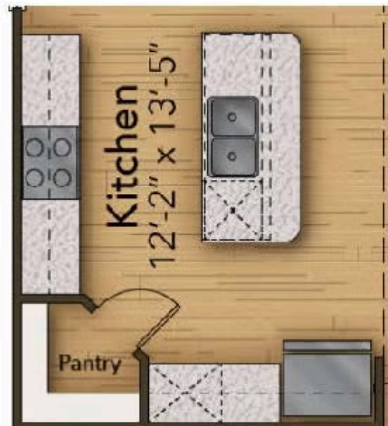


CONTACT US 757-550-2617

WWW.CHESHOMES.COM



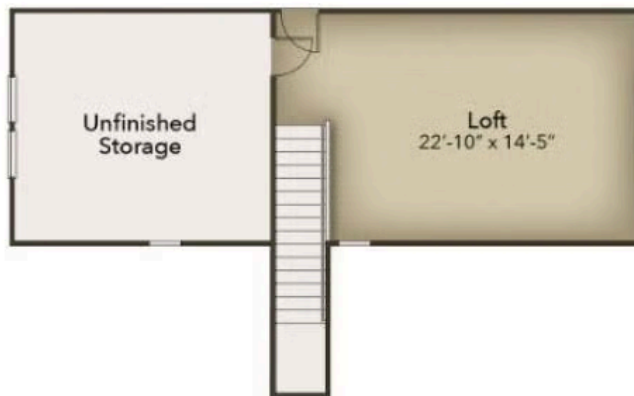
OPTIONS



Gourmet Kitchen



Sunroom



Second Floor



Deluxe Owner's Bath

CONTACT US 757-550-2617

WWW.CHESHOMES.COM