



From \$274,900

Discover the Laurel with nearly 1,400 square feet of thoughtfully designed, single-story living. Step onto the inviting covered porch and into a home that seamlessly blends style and functionality. To your right, two charming bedrooms and a full bath create a private retreat for guests or family members. Moving further inside, the open-concept layout connects the stunning kitchen with the spacious great room, making it perfect for entertaining or enjoying cozy evenings at home. The centerpiece of the kitchen—a stylish island—provides extra seating and counter space for all your cooking and socializing needs. At the back of the home, the owner's suite provides a tranquil retreat, featuring a tray ceiling, a spacious walk-in closet, and a luxurious en-suite bathroom. Premium upgrades throughout the Laurel include LVP flooring in key areas, shaker-style cabinets, sleek stainless steel appliances, and elegant quartz countertops. Make the Laurel your dream home today and embrace the comfort and sophistication you deserve!



3 Bedrooms



2.0 Bathrooms



1,394 Sq.Ft.



1 Stories



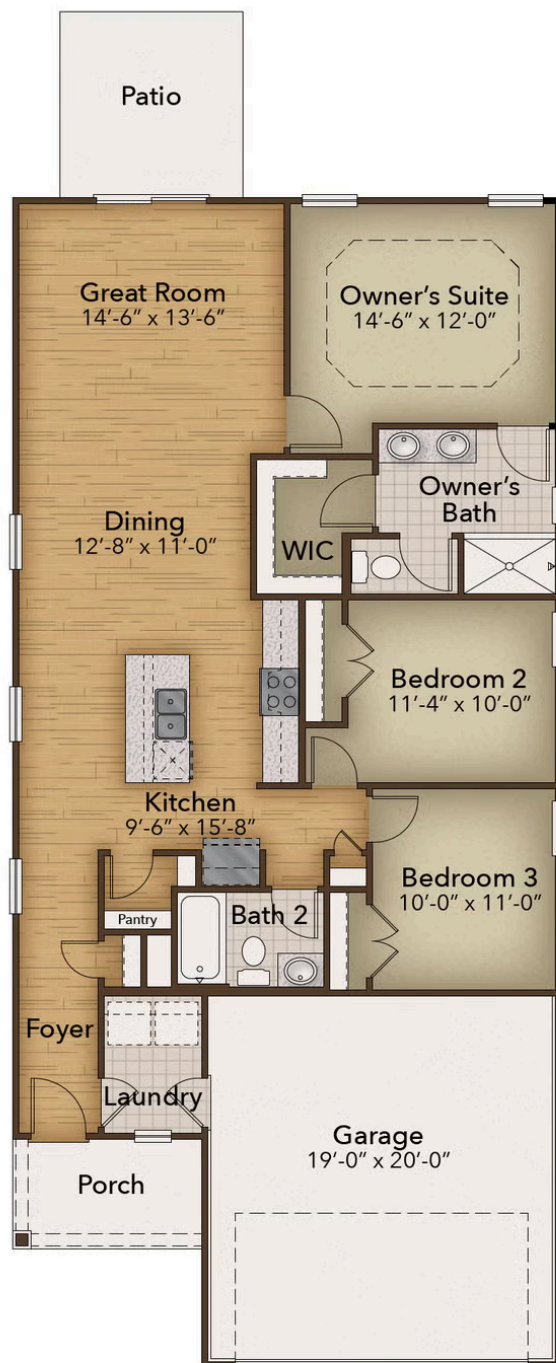
2 Car Garage

CONTACT US 757-550-2617

WWW.CESHOMES.COM



Chesapeake Homes continuously improves home designs and reserves the right to modify home features and specifications without notice or obligation. Square footage and measurements are approximate. Renderings of elevations are artist's concepts. Floor plans vary per elevation. Chesapeake Homes standard features vary by home design and location, please refer to the included features sheet for the community to define specifications. This brochure is for illustrative purposes and not part of the legal contract. Please ask Sales Associate for complete details. © 2026 Chesapeake Homes. Current information as 6th February 2026



CONTACT US 757-550-2617

WWW.CESHOMES.COM



Chesapeake Homes continuously improves home designs and reserves the right to modify home features and specifications without notice or obligation. Square footage and measurements are approximate. Renderings of elevations are artist's concepts. Floor plans vary per elevation. Chesapeake Homes standard features vary by home design and location, please refer to the included features sheet for the community to define specifications. This brochure is for illustrative purposes and not part of the legal contract. Please ask Sales Associate for complete details. © 2026 Chesapeake Homes. Current information as 6th February 2026