



*From \$309,900*

From the moment you walk into The Willow, you'll see why Chesapeake Homes have a reputation for creating livable, functional spaces that you and your family will enjoy for years to come. Featuring 2,146 square feet of living space, four bedrooms, and two and a half baths, The Willow showcases how form and function work together effortlessly. The open-concept layout and large kitchen island lend themselves to always being the home's gathering place. When you're ready to get outside, enjoy the Carolina blue skies while relaxing on your patio or rear-covered porch. Storage space abounds in the walk-in closets that each bedroom has, so everyone is a winner with ample space. After visiting the Chesapeake Homes Design Gallery, your home will be perfectly personalized for you. Reach out to find out more about The Willow today!



**4 Bedrooms**



**2.5 Bathrooms**



**2,146 Sq.Ft.**



**2 Stories**



**2 Car Garage**

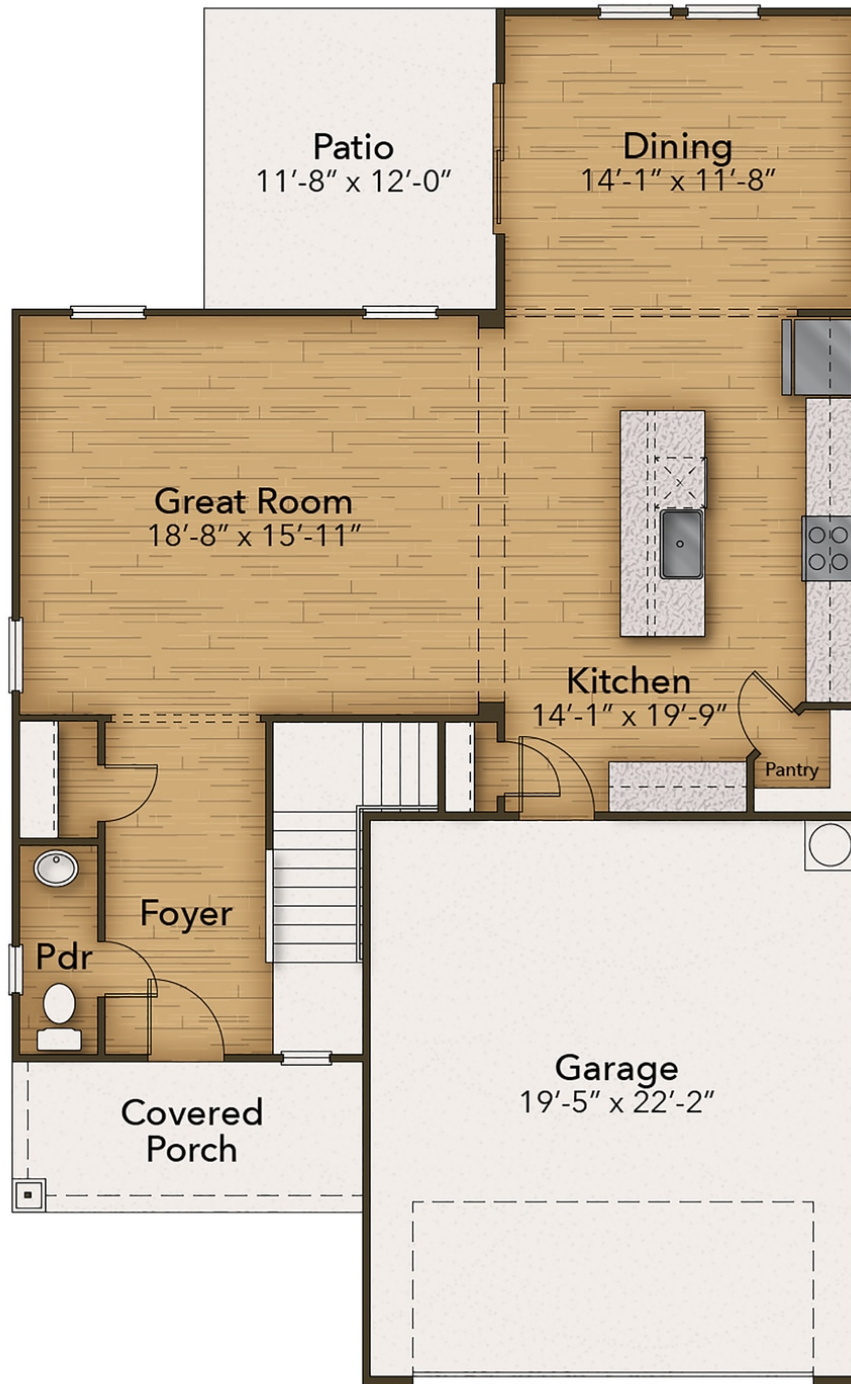
**CONTACT US 757-550-2617**

**WWW.CESHOMES.COM**



Chesapeake Homes continuously improves home designs and reserves the right to modify home features and specifications without notice or obligation. Square footage and measurements are approximate. Renderings of elevations are artist's concepts. Floor plans vary per elevation. Chesapeake Homes standard features vary by home design and location, please refer to the included features sheet for the community to define specifications. This brochure is for illustrative purposes and not part of the legal contract. Please ask Sales Associate for complete details. © 2024 Chesapeake Homes. Current information as 25th April 2024

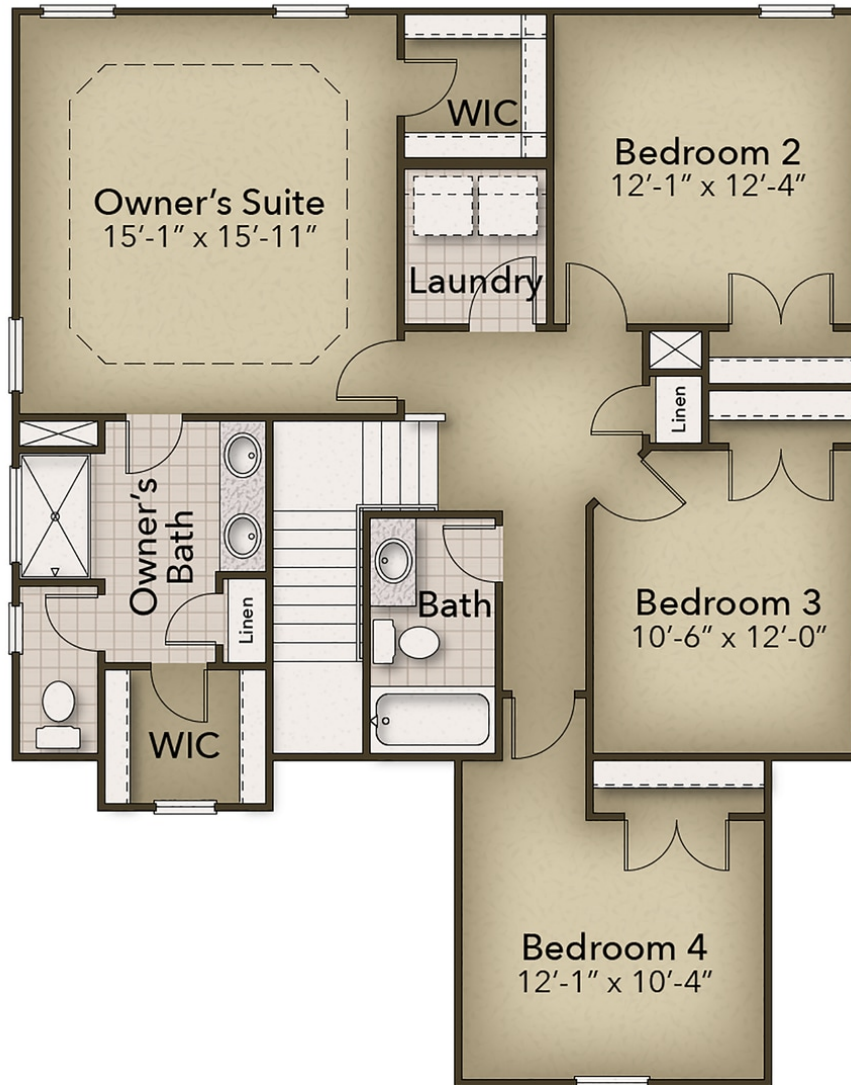
## FIRST FLOOR



**CONTACT US** 757-550-2617

**WWW.CESHOMES.COM**

## SECOND FLOOR



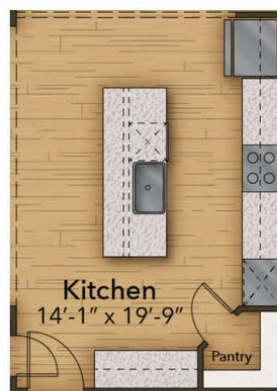
**CONTACT US** 757-550-2617

**WWW.CESHOMES.COM**

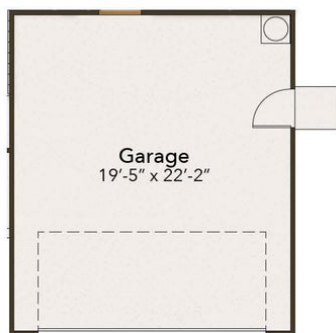
## OPTIONS



Deluxe Owner's Bath



Gourmet Kitchen



Garage Pedestrian Door



Rear Covered Porch

**CONTACT US** 757-550-2617

**WWW.CESHOMES.COM**