



The Willows Community

The Redbud Floor Plan

Experience the perfect home for entertaining and relaxation with the Redbud. Enter through the garage service door into the spacious kitchen, complete with a pantry and center island, perfect for cooking up delicious meals or enjoying takeout. Retreat to your personal oasis in the Owner's Suite, featuring a tray ceiling bedroom and a private bath with double sinks, a walk-in seated shower & closet combination. Create the ultimate hideaway from everyday life. Enjoy the outdoors on the porch, seamlessly connected to the Great Room area, and take advantage of the mild South Carolina climate. Make the Redbud your home today! *Some photos are of a similar home.

\$369,900



4 Bedrooms



2.0 Bathrooms



1,847 Sq.Ft.



1 Stories



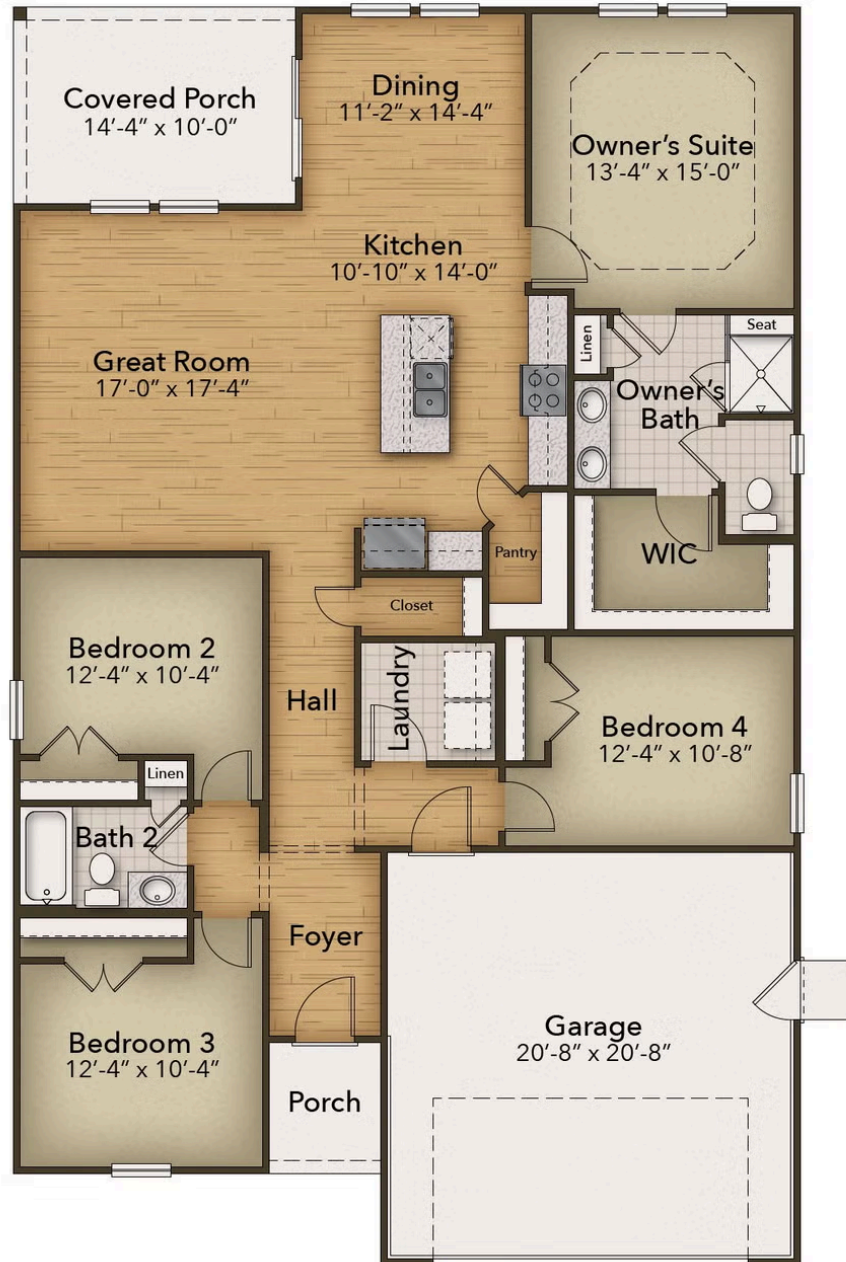
2 Car Garage

CONTACT US 757-550-2617

WWW.CESHOMES.COM



Chesapeake Homes continuously improves home designs and reserves the right to modify home features and specifications without notice or obligation. Square footage and measurements are approximate. Renderings of elevations are artist's concepts. Floor plans vary per elevation. Chesapeake Homes standard features vary by home design and location, please refer to the included features sheet for the community to define specifications. This brochure is for illustrative purposes and not part of the legal contract. Please ask Sales Associate for complete details. © 2025 Chesapeake Homes. Current information as 30th July 2025



CONTACT US 757-550-2617

WWW.CESHOMES.COM

