



## The Willows Community

### The Redbud Floor Plan

Experience the perfect home for entertaining and relaxation with the Redbud. Enter through the garage service door into the spacious kitchen, complete with a pantry and center island, perfect for cooking up delicious meals or enjoying takeout. Retreat to your personal oasis in the Owner's Suite, featuring a tray ceiling bedroom and a private bath with double sinks, a walk-in seated shower & closet combination. Create the ultimate hideaway from everyday life. Enjoy the outdoors on the porch, seamlessly connected to the Great Room area, and take advantage of the mild South Carolina climate. With over 1.4 acre homesite there is plenty of space to enjoy the outdoors, especially those beautiful country sunsets. Make the Redbud your home today!

**\$369,900**



**4 Bedrooms**



**2.0 Bathrooms**



**1,847 Sq.Ft.**



**1 Stories**

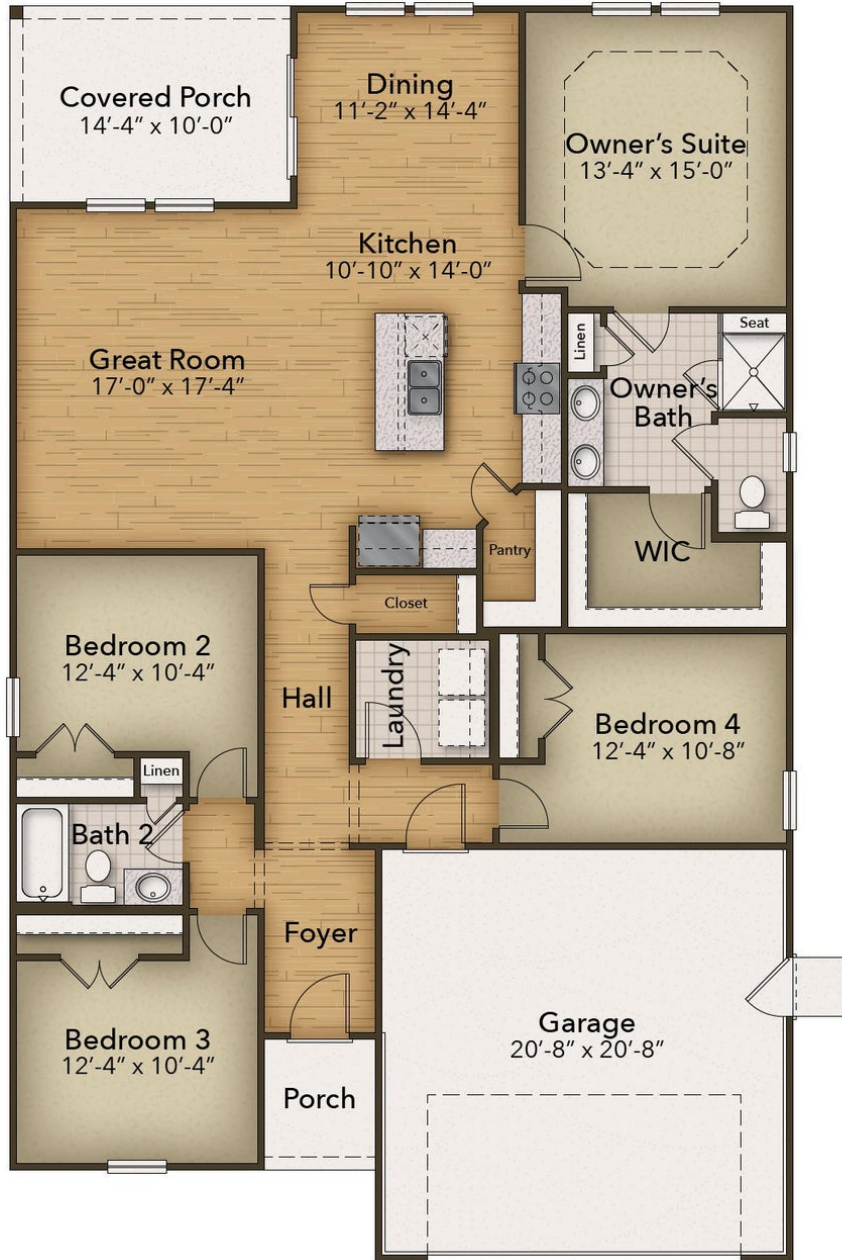


**2 Car Garage**

**CONTACT US 757-550-2617**

**WWW.CESHOMES.COM**





**CONTACT US 757-550-2617**

**WWW.CESHOMES.COM**

