

From \$339,900

At just over 1,800 square feet, the Redbud offers a welcoming blend of comfort and functionality, perfect for entertaining or relaxing at home. The open-concept layout highlights a spacious kitchen with a walk-in pantry and center island—ideal for preparing meals, hosting guests, or enjoying takeout around the island. From the Great Room, you can step directly onto the rear porch, seamlessly connecting indoor and outdoor living while taking full advantage of South Carolina’s mild climate. The Owner’s Suite creates a private retreat with a tray ceiling, generous walk-in closet, and a spa-inspired bathroom featuring double sinks and a walk-in shower. Two additional bedrooms and a full bath provide versatile space for family, guests, or a home office. The Redbud also offers options for expanded outdoor living or upgraded bath layouts, giving you the ability to personalize the home to fit your lifestyle. With thoughtful design and flexible features, the Redbud is the perfect balance of everyday convenience and peaceful retreat.



3 Bedrooms



2.0 Bathrooms



1,847 Sq.Ft.



1 Stories



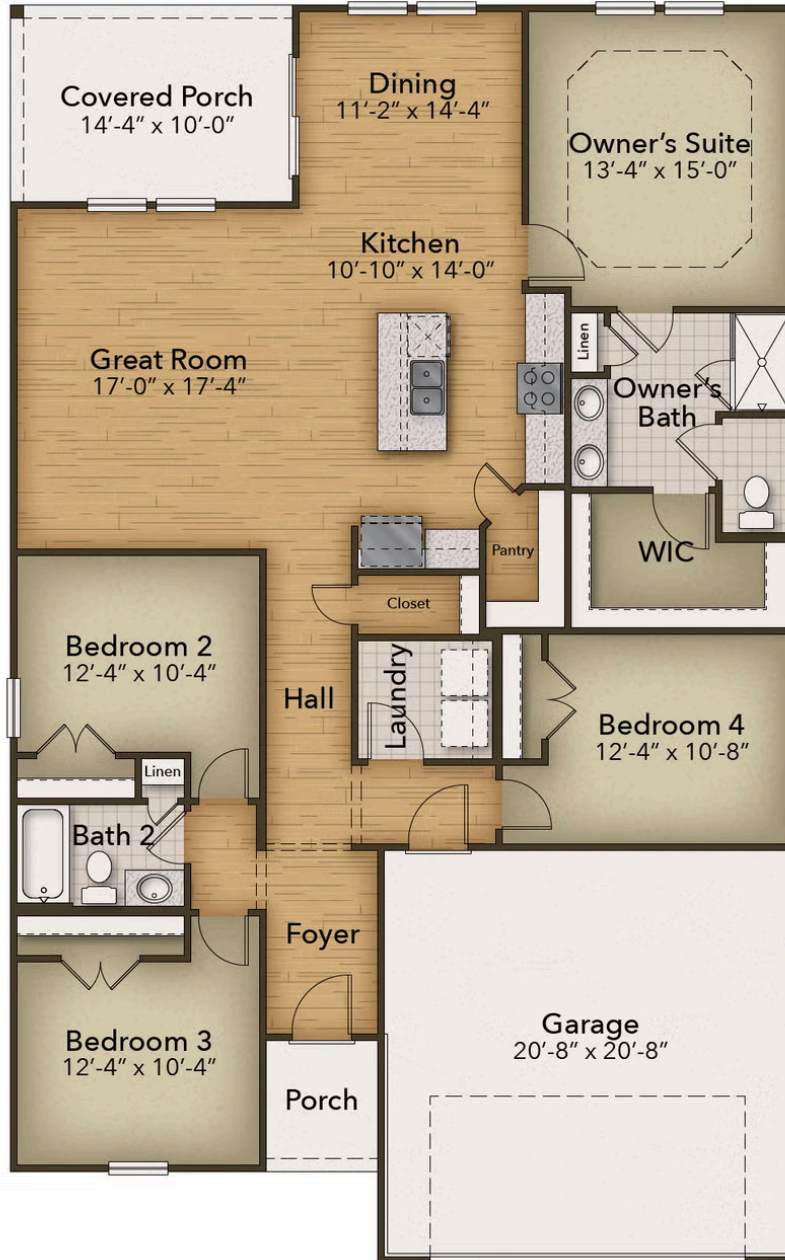
2 Car Garage

CONTACT US 757-550-2617

WWW.CESHOMES.COM



Chesapeake Homes continuously improves home designs and reserves the right to modify home features and specifications without notice or obligation. Square footage and measurements are approximate. Renderings of elevations are artist's concepts. Floor plans vary per elevation. Chesapeake Homes standard features vary by home design and location, please refer to the included features sheet for the community to define specifications. This brochure is for illustrative purposes and not part of the legal contract. Please ask Sales Associate for complete details. © 2026 Chesapeake Homes. Current information as 25th April 2026



CONTACT US 757-550-2617

WWW.CESHOMES.COM

