



## From \$341,900

The Shorebreak is the perfect balance between outdoor living space and a coastal-inspired interior, encouraging you to slip off your sandals and relax. Starting at 1,940 square feet, this model offers ample space, up to four bedrooms, three bathrooms, and an optional second floor above a two-car garage. As you step inside from the covered front porch, you'll immediately find yourself in an open and inviting kitchen, dining, and great room area. The sliding glass doors seamlessly connect the interior with a generous 179 square foot covered porch, providing an ideal setting for warm summer evenings or gatherings with friends and family. The Shorebreak offers various customization options to make this space truly your own, such as a gourmet island, tray ceiling, wall ovens, and optional fireplace locations. Continuing through the foyer, you'll discover a spacious drop zone and laundry area, equipped with convenient features like a soaking sink, extra shelving, and a bench for comfortable seating while unloading beach gear or sandy clothes. Across from the drop zone, you have the flexibility to add barn doors for a study or transform the space into a third bedroom. Beyond the open living space, ...



**3 Bedrooms**



**2.0 Bathrooms**



**1,938 Sq.Ft.**



**1 Stories**



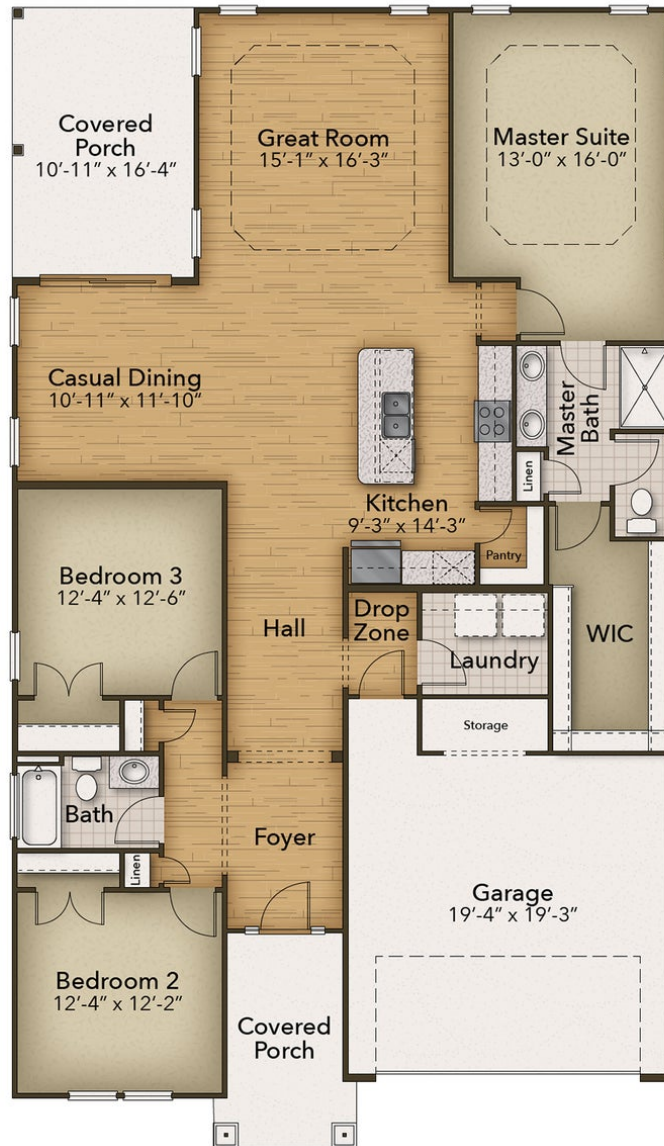
**2 Car Garage**

**CONTACT US 757-550-2617**

**WWW.CESHOMES.COM**



**FIRST FLOOR**



**CONTACT US 757-550-2617**

**WWW.CESHOMES.COM**

