



Traditions at Carolina Forest Community

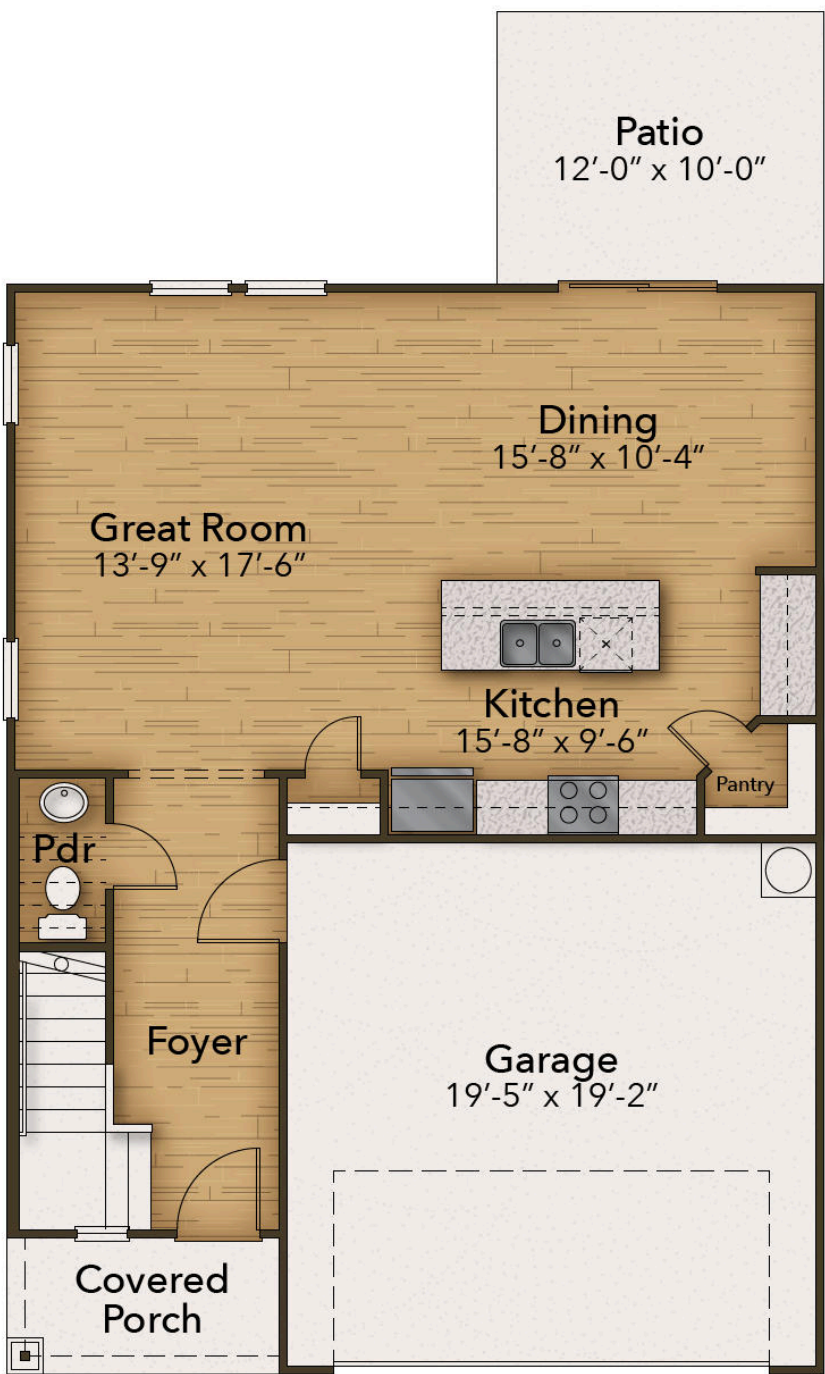
The Sycamore Floor Plan

Introducing the Sycamore plan - luxury living at its finest with efficient use of space! This stunning home offers 1,795 square feet of pure elegance, featuring three bedrooms and two and a half bathrooms. But that's not all - the Sycamore offers endless possibilities for customization, allowing you to transform it into your dream home. Need an extra bedroom? The open loft can easily be converted into a fourth bedroom. And why stop there? You can also add a rear-covered porch and a cozy gas fireplace in your great room. Prepare to be amazed as you step into the open-concept downstairs living space. The great room, open kitchen, and dining area seamlessly blend together, creating an atmosphere that's perfect for both relaxation and entertaining. And if you're a culinary enthusiast, you'll love the option to upgrade your kitchen with double wall ovens and a spacious center island, turning it into a gourmet chef's paradise. No matter how you choose to personalize your space, the...

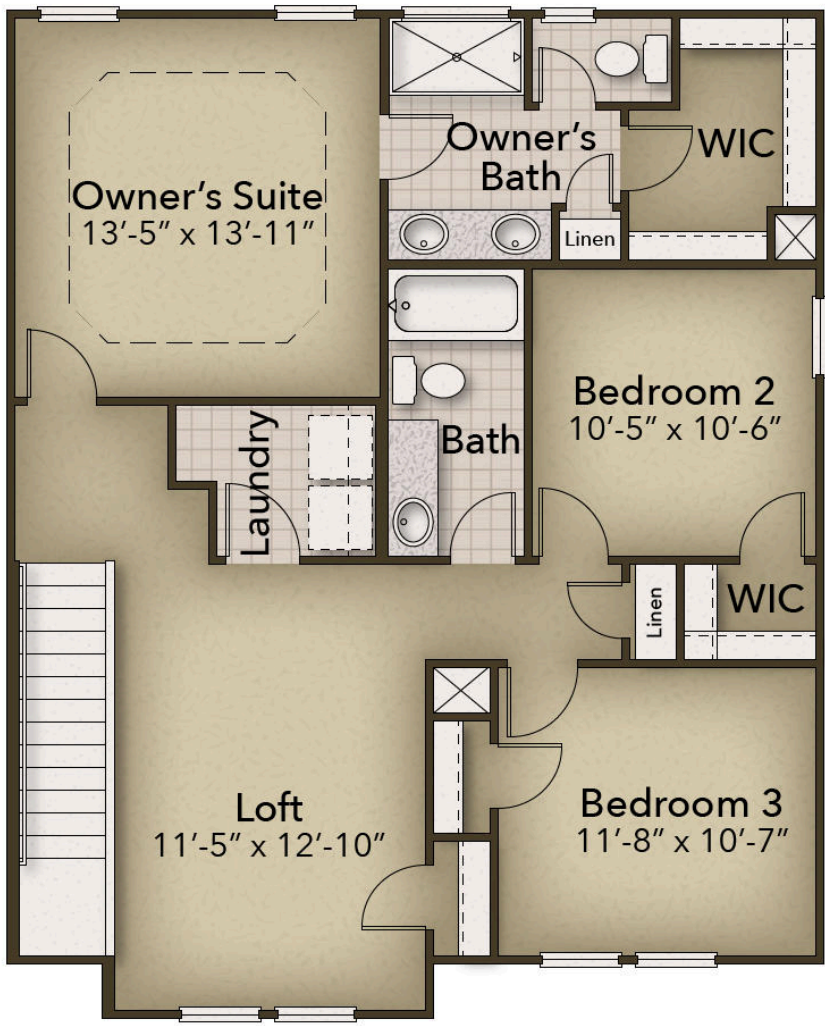
 3 Bedrooms

 2.5 Bathrooms

 1,795 Sq.Ft.



CONTACT US 757-550-2617
WWW.CESHOMES.COM



CONTACT US 757-550-2617
WWW.CHESHOMES.COM