



## Traditions at Carolina Forest Community

### The Hibiscus Floor Plan

With 1,932 square feet of living space, the Hibiscus is one of the largest of the Villas and offers several options that hold beauty and utility in high regard. Upon entering the home, you'll be greeted by the double-height foyer which leads you to the wide-open downstairs living space. The open concept layout and large, 7' kitchen island lends itself to always being the home's gathering place. When you're ready to get outside, enjoy the ocean air while relaxing on your patio or rear-covered porch. On one of those rare chilly evenings, you have the optional gas fireplace that can only enhance the great room's coziness. Upstairs, you will find two bedrooms, a full bathroom, and an open loft. The Hibiscus is perfect for your family or a revolving door of visitors who can't wait to enjoy coastal living with you. \*PHOTOS OF SIMILAR HOME\*



3 Bedrooms



2.5 Bathrooms



1,932 Sq.Ft.



2 Stories



2 Car Garage



**FIRST FLOOR**

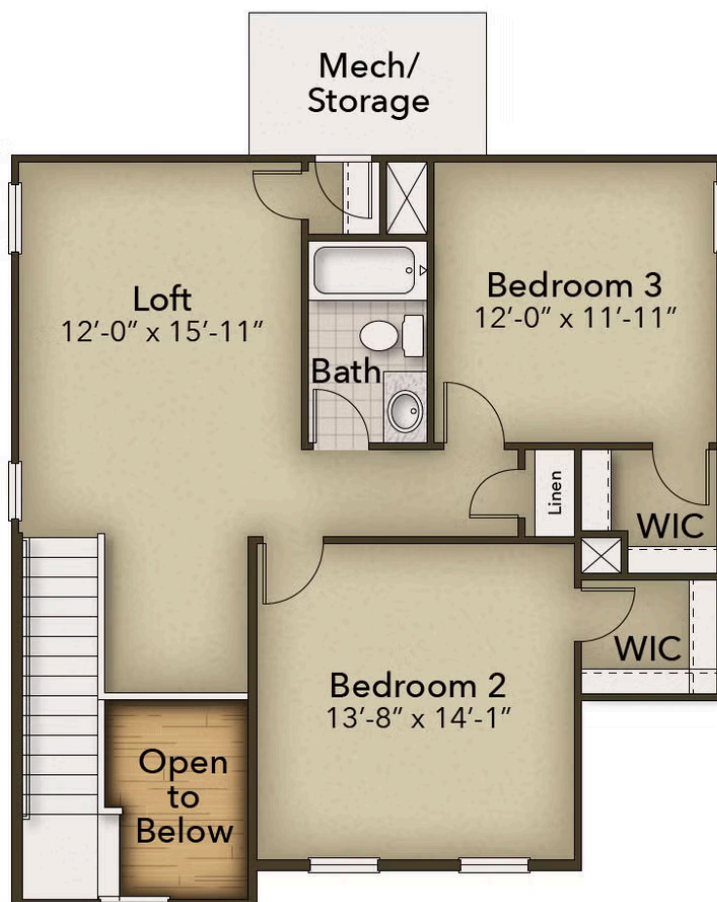


**CONTACT US 757-550-2617**

**WWW.CESHOMES.COM**



## SECOND FLOOR



CONTACT US 757-550-2617

WWW.CESHOMES.COM

