



Traditions at Carolina Forest Community

The Boardwalk Floor Plan

Step into the Boardwalk, a stunning coastal-inspired home with over 2,100 square feet of first-floor living space. As you enter from the welcoming covered front porch, you'll be greeted by a foyer that leads to a spacious drop zone area, perfect for keeping your belongings organized. On the left side of the home, you'll find two bedrooms with ample closet space and a full bathroom. Continuing ahead, there is an open dining area. Next, imagine creating a cozy and inviting great room area. The kitchen includes a large gourmet island, providing additional seating and plenty of counter space for entertaining or preparing delicious meals. For more casual dining, an extended breakfast area offers a lovely view of your backyard. Beyond the great room, sliding glass doors open up to a spacious covered porch. The Owner's suite in the Boardwalk is truly impressive. It features a spacious walk-in closet and a beautiful master bathroom with multiple options for a deluxe seated shower. A second-floor plan adds another bedroom, full bathroom, walk-in closet, and linen closet. Additionally, there is a spacious loft area that can be utilized as a guest suite, media ...

\$520,236



3 Bedrooms



3.0 Bathrooms



2,189 Sq.Ft.



2 Stories



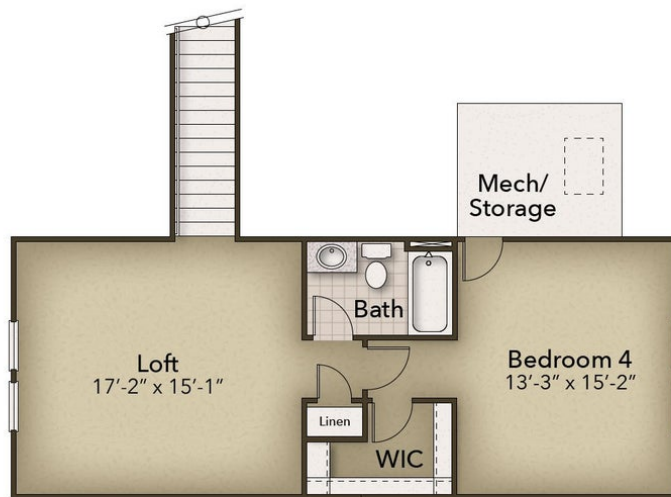
2 Car Garage



CONTACT US 757-550-2617

WWW.CESHOMES.COM





CONTACT US 757-550-2617

WWW.CESHOMES.COM

