



Traditions at Carolina Forest Community

The Shorebreak Floor Plan

Introducing the Shorebreak - the ultimate coastal-inspired retreat that combines outdoor living with a beautiful interior. Lose the shoes, unwind, and get ready for some serious relaxation! With its spacious layout, the Shorebreak offers up to four bedrooms, three bathrooms, and even a second floor above a two-car garage. Step inside and be captivated by the open kitchen, dining, and great room area, all seamlessly connected. Slide open the glass doors and step onto the inviting 179-square-foot covered porch - perfect for warm summer nights and gatherings with friends. Whether you need ample counter space, extra seating, or a cozy spot for intimate conversations, this model has it all. Unwind in the stunning master suite featuring a tray ceiling, an enormous walk-in closet, a double vanity, and a seated shower. So go ahead, kick back, and relax in the comfort and spaciousness of the Shorebreak. Your dream coastal retreat awaits!

\$456,940



3 Bedrooms



2.0 Bathrooms



1,938 Sq.Ft.



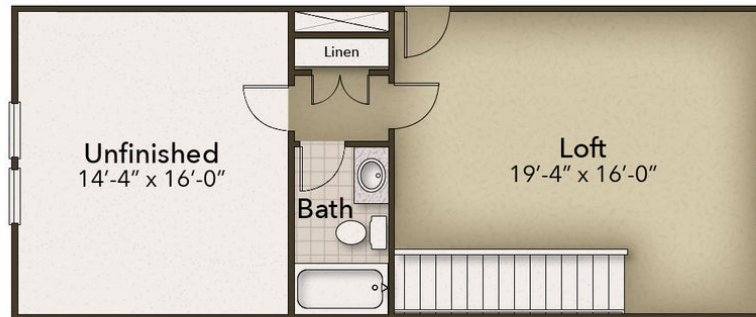
2 Car Garage



CONTACT US 757-550-2617

WWW.CESHOMES.COM





CONTACT US 757-550-2617

WWW.CESHOMES.COM

