



## Traditions at Carolina Forest Community

### The Mangrove Floor Plan

Experience Elevated Living with The Mangrove Step into the spacious luxury of The Mangrove, a thoughtfully designed home offering 3,349 square feet of versatile living space. With five bedrooms and three full baths, this home adapts to your lifestyle, providing comfort and functionality for every member of the family. The main level features beautifully designed living areas, including a gourmet kitchen option with extended counter and cabinet space, a convenient butler's pantry for extra storage, and a full bath next to the guest suite. Upstairs, retreat to the elegant Owner's Suite, complete with dual walk-in closets and a spa-like bath for ultimate relaxation. Three additional bedrooms and a flexible loft—perfect for a sitting area, media space, or optional fifth bedroom—ensure there's room for everyone. Make the Mangrove and make it your dream home today!

**\$541,900**



5 Bedrooms



3.0 Bathrooms



3,349 Sq.Ft.



2 Stories

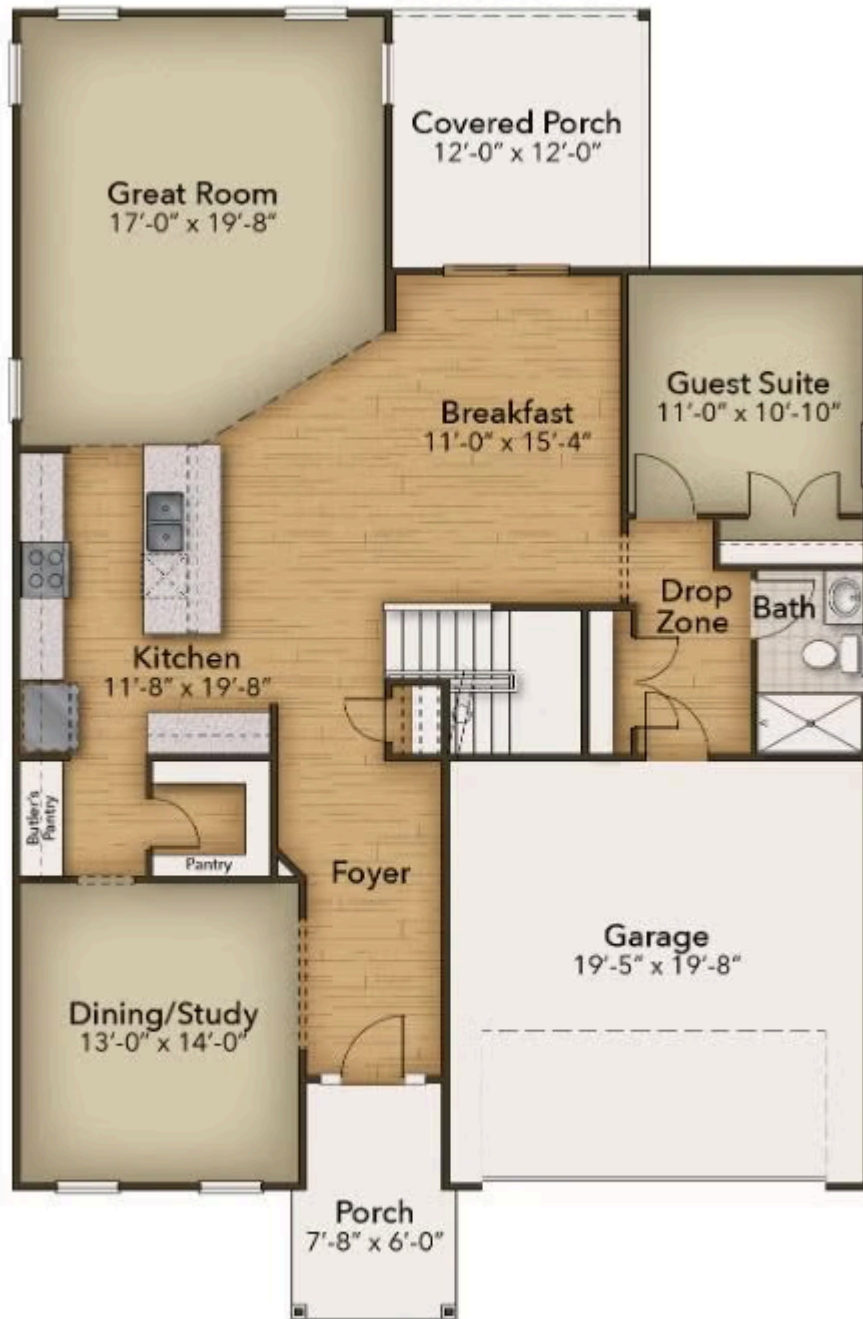


2 Car Garage

CONTACT US 757-550-2617

WWW.CESHOMES.COM



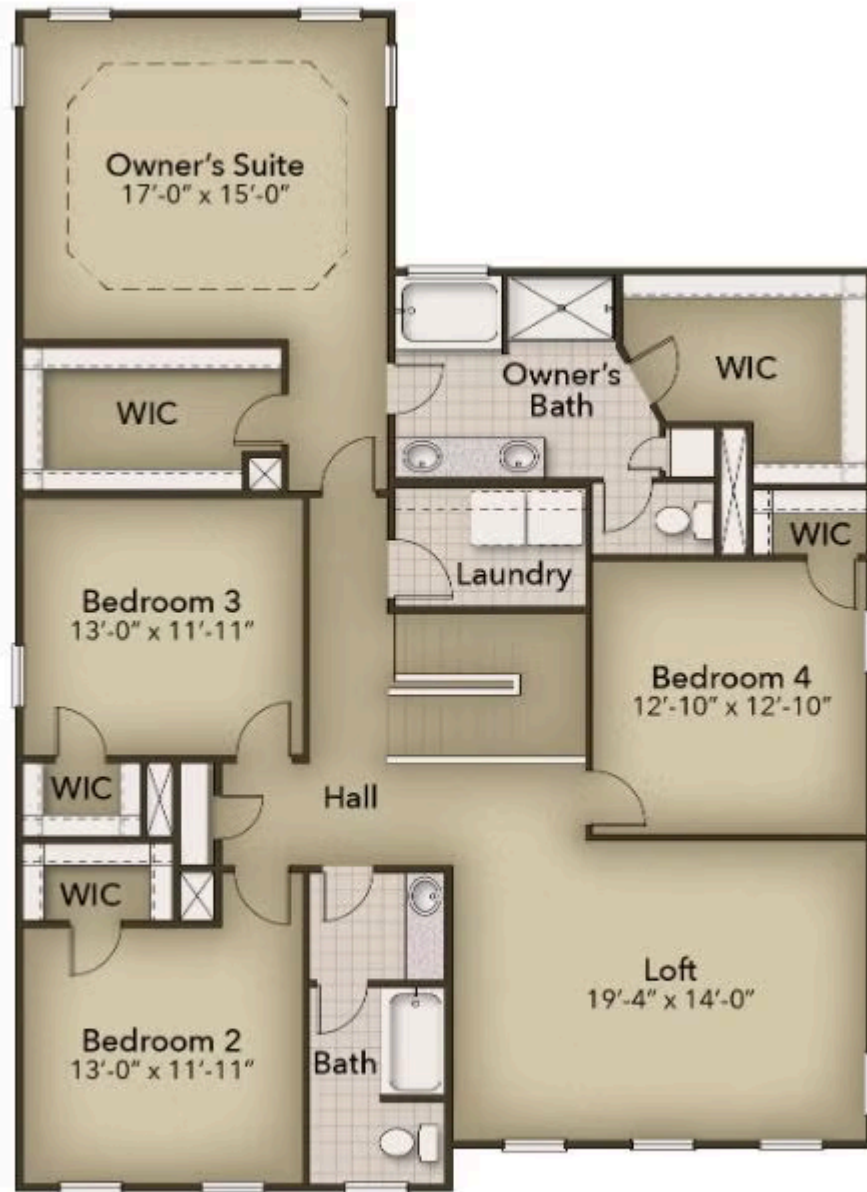


CONTACT US 757-550-2617

WWW.CHESHOMES.COM



Chesapeake Homes continuously improves home designs and reserves the right to modify home features and specifications without notice or obligation. Square footage and measurements are approximate. Renderings of elevations are artist's concepts. Floor plans vary per elevation. Chesapeake Homes standard features vary by home design and location, please refer to the included features sheet for the community to define specifications. This brochure is for illustrative purposes and not part of the legal contract. Please ask Sales Associate for complete details. © 2025 Chesapeake Homes. Current information as 22nd July 2025



CONTACT US 757-550-2617

WWW.CESHOMES.COM

