



Traditions at Carolina Forest Community

The Boardwalk Floor Plan

The Boardwalk offers over 2,100 square feet of thoughtfully designed first-floor living with a breezy coastal feel. Step in from the welcoming front porch to a spacious foyer with an convenient drop zone. Two bedrooms and a full bath sit to one side, while the open-concept living area includes a dining room, a spacious great room and a gourmet kitchen with a large island and sunny breakfast nook. Sliding glass doors lead to a covered porch—perfect for relaxing or entertaining. The private Owner's Suite features a large walk-in closet and spa-like bath with walk in shower with bench. The Boardwalk is ready to become your dream home.*Photos of similar home.

\$527,900



3 Bedrooms



2.0 Bathrooms



2,189 Sq.Ft.



1 Stories



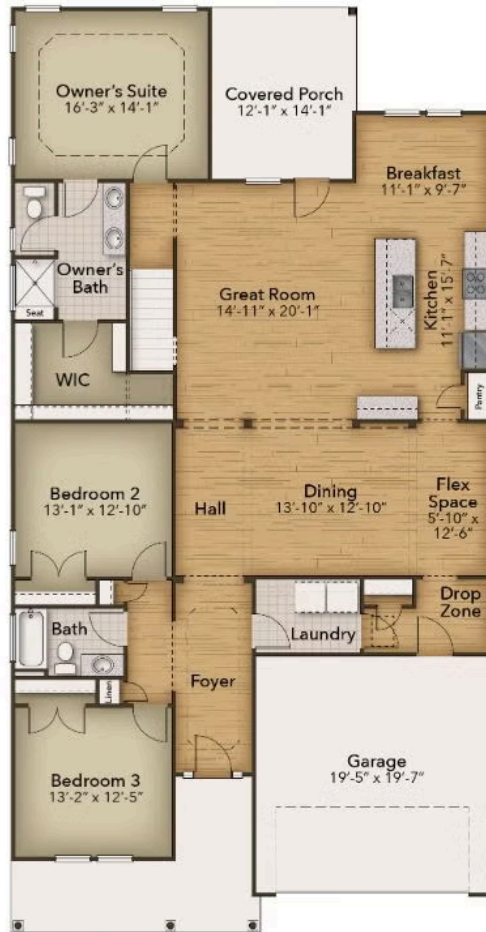
2 Car Garage

CONTACT US 757-550-2617

WWW.CHESHOMES.COM



Chesapeake Homes continuously improves home designs and reserves the right to modify home features and specifications without notice or obligation. Square footage and measurements are approximate. Renderings of elevations are artist's concepts. Floor plans vary per elevation. Chesapeake Homes standard features vary by home design and location; please refer to the included features sheet for the community to define specifications. This brochure is for illustrative purposes and not part of the legal contract. Please ask

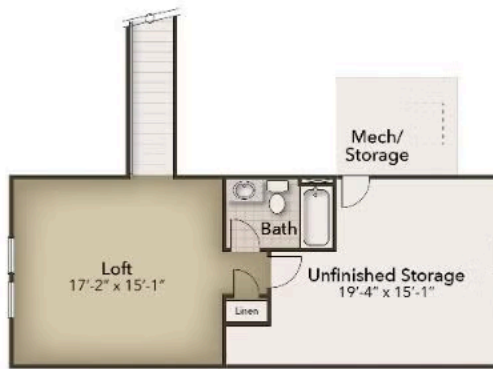


CONTACT US 757-550-2617

WWW.CHESHOMES.COM



Chesapeake Homes continuously improves home designs and reserves the right to modify home features and specifications without notice or obligation. Square footage and measurements are approximate. Renderings of elevations are artist's concepts. Floor plans vary per elevation. Chesapeake Homes standard features vary by home design and location, please refer to the included features sheet for the community to define specifications. This brochure is for illustrative purposes and not part of the legal contract. Please ask Sales Associate for complete details. © 2025 Chesapeake Homes. Current information as 9th May 2025



CONTACT US 757-550-2617

WWW.CHESHOMES.COM



Chesapeake Homes continuously improves home designs and reserves the right to modify home features and specifications without notice or obligation. Square footage and measurements are approximate. Renderings of elevations are artist's concepts. Floor plans vary per elevation. Chesapeake Homes standard features vary by home design and location, please refer to the included features sheet for the community to define specifications. This brochure is for illustrative purposes and not part of the legal contract. Please ask Sales Associate for complete details. © 2025 Chesapeake Homes. Current information as 9th May 2025