



## Traditions at Carolina Forest Community

### The Longboard Floor Plan

Discover the divine Longboard model - a stunning two-story home with 2,857 square feet of luxury living space. Boasting three bedrooms, two bathrooms, and an array of lavish features, this home invites you to step inside through the covered front porch, covered rear porch, or two-car garage. Marvel at the spacious floor plan as you seamlessly move through the airy kitchen, dining, and great room area - perfect for hosting family and friends. Explore two large bedrooms with walk-in closets, a full bathroom, a spacious laundry room, and a breathtaking owner's suite beyond the great room. Indulge in the serenity of the extra large bedroom, walk-in closet, and deluxe owner's bathroom. This home is calling your name for you and your family! Take a tour today!

**\$514,900**



**3 Bedrooms**



**3.0 Bathrooms**



**2,857 Sq.Ft.**



**2 Stories**



**2 Car Garage**

**CONTACT US 757-550-2617**

**WWW.CESHOMES.COM**



Chesapeake Homes continuously improves home designs and reserves the right to modify home features and specifications without notice or obligation. Square footage and measurements are approximate. Renderings of elevations are artist's concepts. Floor plans vary per elevation. Chesapeake Homes standard features vary by home design and location. Please refer to the included features sheet for the community to define specifications. This brochure is for illustrative purposes and not part of the legal contract. Please ask

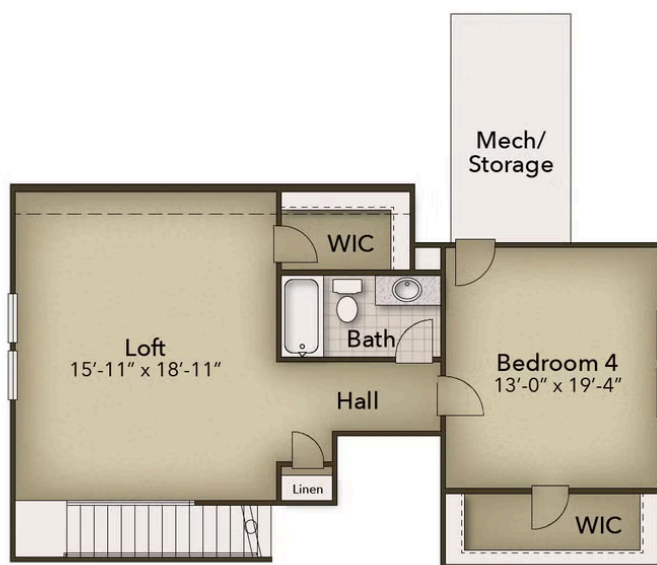


CONTACT US 757-550-2617

WWW.CESHOMES.COM



Chesapeake Homes continuously improves home designs and reserves the right to modify home features and specifications without notice or obligation. Square footage and measurements are approximate. Renderings of elevations are artist's concepts. Floor plans vary per elevation. Chesapeake Homes standard features vary by home design and location, please refer to the included features sheet for the community to define specifications. This brochure is for illustrative purposes and not part of the legal contract. Please ask Sales Associate for complete details. © 2026 Chesapeake Homes. Current information as 6th February 2026



CONTACT US 757-550-2617

WWW.CESHOMES.COM



Chesapeake Homes continuously improves home designs and reserves the right to modify home features and specifications without notice or obligation. Square footage and measurements are approximate. Renderings of elevations are artist's concepts. Floor plans vary per elevation. Chesapeake Homes standard features vary by home design and location, please refer to the included features sheet for the community to define specifications. This brochure is for illustrative purposes and not part of the legal contract. Please ask Sales Associate for complete details. © 2026 Chesapeake Homes. Current information as 6th February 2026