



The Hibiscus

TRADITIONS AT CAROLINA FOREST

From \$379,900

With 1,932 square feet of living space, the Hibiscus is one of the largest of the Villas and offers several options that hold beauty and utility in high regard. Upon entering the home, you'll be greeted by the double-height foyer which leads you to the wide-open downstairs living space. The open concept layout and large, 7' kitchen island lends itself to always being the home's gathering place. When you're ready to get outside, enjoy the ocean air while relaxing on your patio or rear-covered porch. On one of those rare chilly evenings, you have the optional gas fireplace that can only enhance the great room's coziness. Upstairs, you will find two bedrooms, a full bathroom, and an open loft. The Hibiscus is perfect for your family or a revolving door of visitors who can't wait to enjoy coastal living with you.

 3 Bedrooms


 2.5 Bathrooms

 1,932 Sq. Ft.

 2 Stories

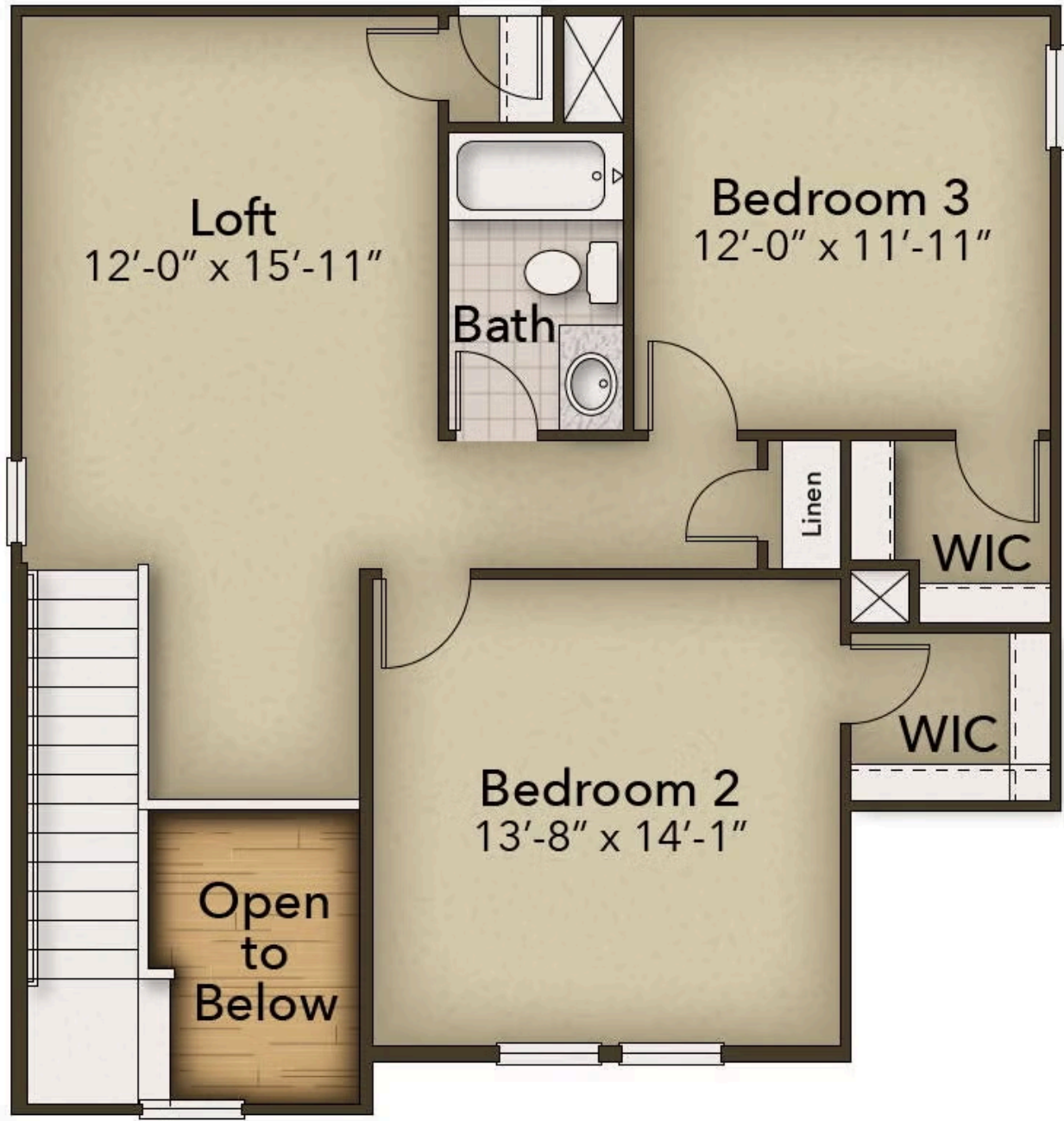
 2 Car Garage

CONTACT US 757-550-2617
WWW.CHESHOMES.COM

 Chesapeake Homes continuously improves home designs and reserves the right to modify home features and specifications without notice or obligation. Square footage and measurements are approximate. Renderings of elevations are artist's concepts. Floor plans vary per elevation. Chesapeake Homes standard features vary by home design and location, please refer to the included features sheet for the community to define specifications. This brochure is for illustrative purposes and not part of the legal contract. Please ask Sales Associate for complete details. © 2026 Chesapeake Homes. Current information as 20th June 2026



CONTACT US 757-550-2617
WWW.CESHOMES.COM



CONTACT US 757-550-2617
WWW.CESHOMES.COM