

# From \$324,900

Introducing the Sycamore plan - luxury living at its finest with efficient use of space! This stunning home offers 1,795 square feet of pure elegance, featuring three bedrooms and two and a half bathrooms. But that's not all - the Sycamore offers endless possibilities for customization, allowing you to transform it into your dream home. Need an extra bedroom? The open loft can easily be converted into a fourth bedroom. And why stop there? You can also add a rear-covered porch and a cozy gas fireplace in your great room. Prepare to be amazed as you step into the open-concept downstairs living space. The great room, open kitchen, and dining area seamlessly blend together, creating an atmosphere that's perfect for both relaxation and entertaining. And if you're a culinary enthusiast, you'll love the option to upgrade your kitchen with double wall ovens and a spacious center island, turning it into a gourmet chef's paradise. No matter how you choose to personalize your space, the Sycamore is more than just a house - it's a place you'll be proud to call home. Get ready to experience true luxury and make ...



3 Bedrooms



2.5 Bathrooms



1,795 Sq.Ft.



2 Stories



2 Car Garage

CONTACT US 757-550-2617

WWW.CESHOMES.COM



Chesapeake Homes continuously improves home designs and reserves the right to modify home features and specifications without notice or obligation. Square footage and measurements are approximate. Renderings of elevations are artist's concepts. Floor plans vary per elevation. Chesapeake Homes standard features vary by home design and location, please refer to the included features sheet for the community to define specifications. This brochure is for illustrative purposes and not part of the legal contract. Please ask Sales Associate for complete details. © 2026 Chesapeake Homes. Current information as 6th February 2026

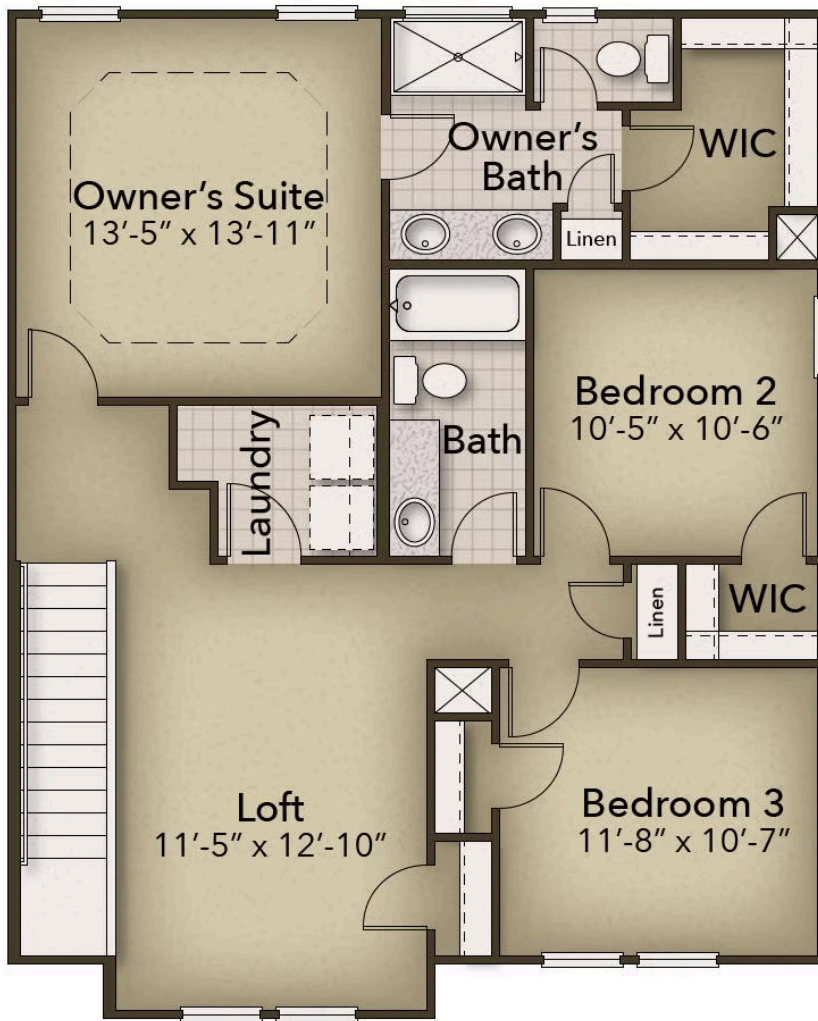


CONTACT US 757-550-2617

WWW.CESHOMES.COM



Chesapeake Homes continuously improves home designs and reserves the right to modify home features and specifications without notice or obligation. Square footage and measurements are approximate. Renderings of elevations are artist's concepts. Floor plans vary per elevation. Chesapeake Homes standard features vary by home design and location, please refer to the included features sheet for the community to define specifications. This brochure is for illustrative purposes and not part of the legal contract. Please ask Sales Associate for complete details. © 2026 Chesapeake Homes. Current information as 6th February 2026



CONTACT US 757-550-2617

WWW.CESHOMES.COM



Chesapeake Homes continuously improves home designs and reserves the right to modify home features and specifications without notice or obligation. Square footage and measurements are approximate. Renderings of elevations are artist's concepts. Floor plans vary per elevation. Chesapeake Homes standard features vary by home design and location, please refer to the included features sheet for the community to define specifications. This brochure is for illustrative purposes and not part of the legal contract. Please ask Sales Associate for complete details. © 2026 Chesapeake Homes. Current information as 6th February 2026