

From \$444,900

Introducing the Wave Crest - the perfect blend of space and style in a floor plan. Imagine yourself starting your day in a beautiful home with a three-car garage and a charming covered front porch. Step inside and be greeted by an impressive foyer and a study on your left. The heart of the home showcases a spacious dining room that flows seamlessly into a thoughtfully designed kitchen. This kitchen offers ample counter space, storage, and a walk-in pantry. Entertaining and relaxing is made easy with the open floor plan of this stunning residence. The Great Room and breakfast nook, just beyond the kitchen, provide the ideal setting. And when it's time to unwind, you can enjoy breathtaking South Carolina sunsets from your covered rear porch while grilling out or simply enjoying the gentle ocean breeze. The front of the home features two Bedrooms with walk-in closets and a full bathroom. Plus, there's a convenient drop zone for your beach gear next to the pass-through laundry room. Last but certainly not least, the Owner's suite bedroom is a luxurious retreat with a tray ceiling and a huge walk-in closet. The ...

 **3 Bedrooms**

 **2.0 Bathrooms**

 **2,046 Sq. Ft.**

 **1 Stories**

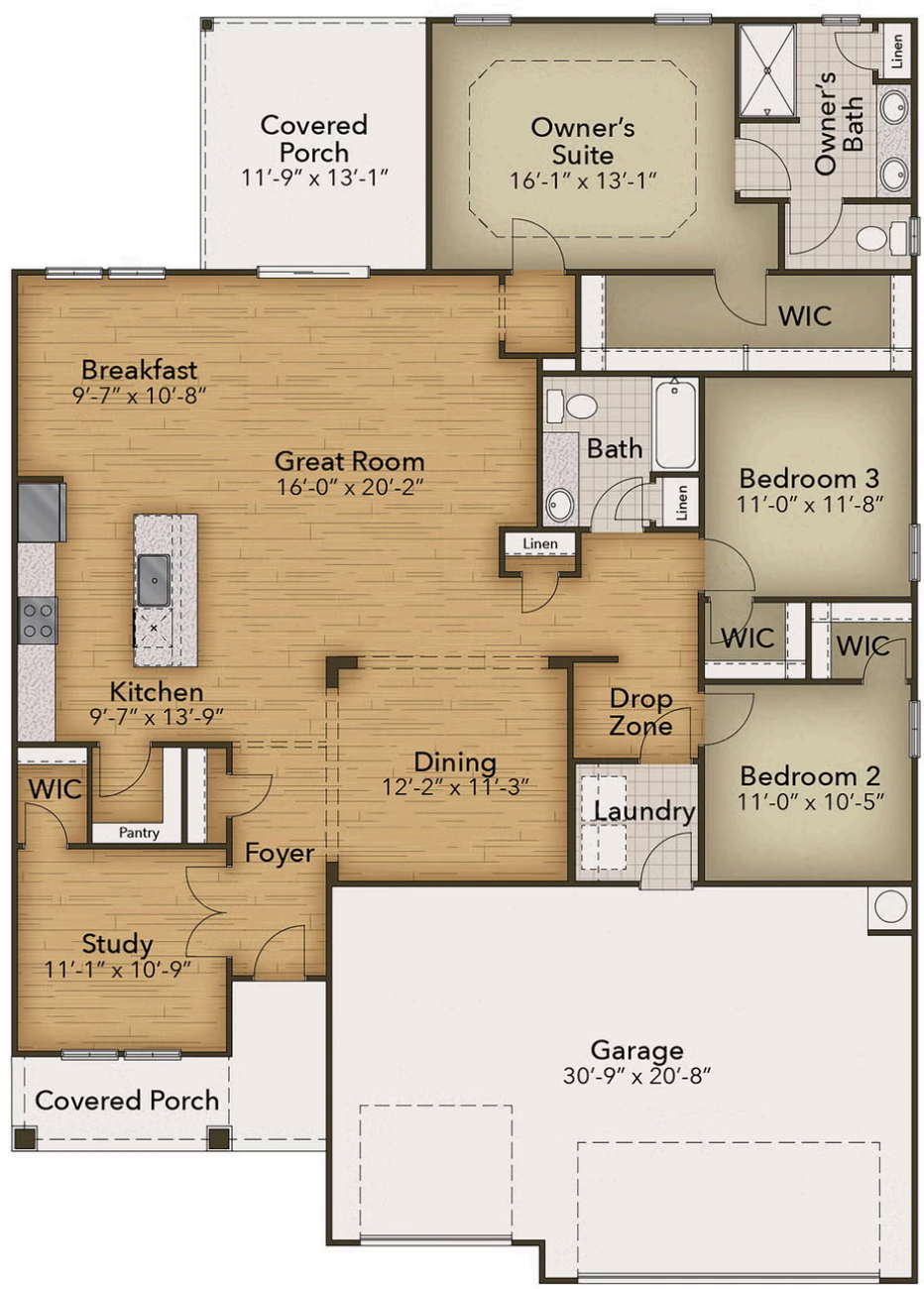
 **2 Car Garage**

CONTACT US 757-550-2617

WWW.CESHOMES.COM



Chesapeake Homes continuously improves home designs and reserves the right to modify home features and specifications without notice or obligation. Square footage and measurements are approximate. Renderings of elevations are artist's concepts. Floor plans vary per elevation. Chesapeake Homes standard features vary by home design and location, please refer to the included features sheet for the community to define specifications. This brochure is for illustrative purposes and not part of the legal contract. Please ask Sales Associate for complete details. © 2026 Chesapeake Homes. Current information as 21st June 2026



CONTACT US 757-550-2617
WWW.CESHOMES.COM